

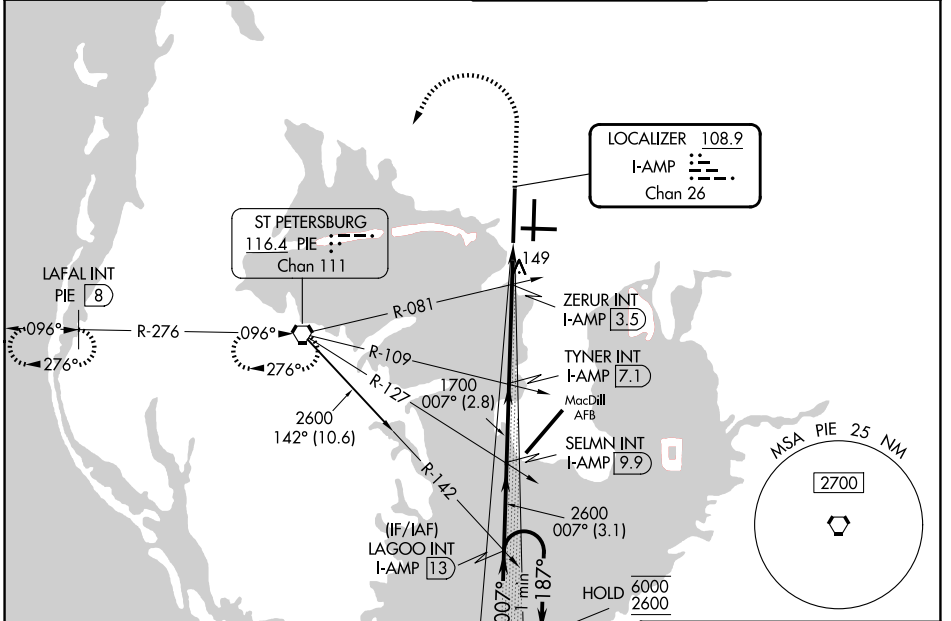
LOC/DME I-AMP 108.9 Chan 26	APP CRS 007°	Rwy Ldg 10800 TDZE 11 Apt Elev 26
---	------------------------	--

ILS or LOC RWY 1L

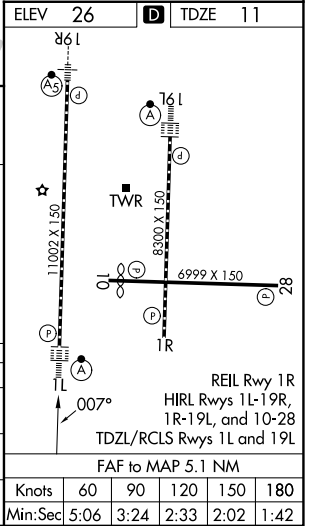
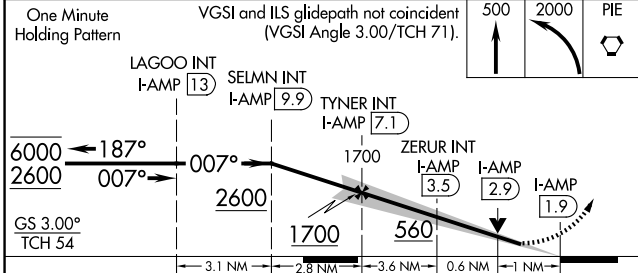
TAMPA INTL (TPA)

DME and RADAR required.	ALSF-2 	MISSED APPROACH: Climb to 500 then climbing left turn to 2000 direct PIE VORTAC and hold, continue climb-in-hold to 2000. (TACAN aircraft climb to 500 then climbing left turn to 2000 direct PIE VORTAC then on PIE VORTAC R-276 to LAFAL INT/PIE 8 DME and hold W, RT, 096° inbound).
<p> Simultaneous approach authorized.</p> <p> For inop ALS, increase S-ILS 1L Cat E visibility to RVR 4000 and S-LOC 1L Cat E visibility to RVR 6000.</p>		

D-ATIS 126.45	TAMPA APP CON 118.5 307.175	TAMPA TOWER 119.5 269.4	GND CON 121.7 269.4
-------------------------	---------------------------------------	-----------------------------------	-------------------------------



DME required for holding at LAGOO INT.



SE-3, 11 JUN 2026 to 09 JUL 2026

SE-3, 11 JUN 2026 to 09 JUL 2026