

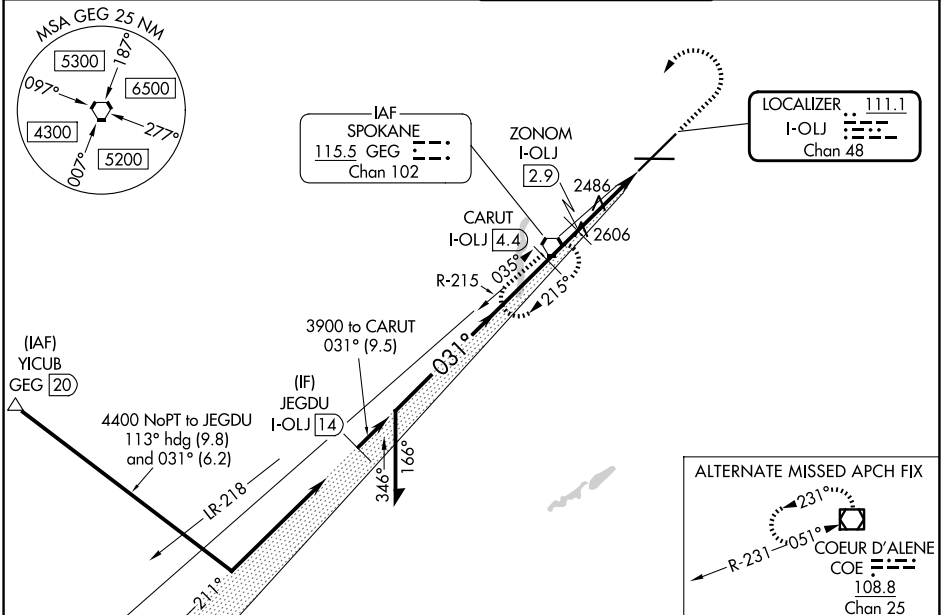
LOC/DME I-OLJ 111.1 Chan 48	APP CRS 031°	Rwy Ldg TDZE 11002 2385 Apt Elev 2385
--	------------------------	--

ILS or LOC RWY 3

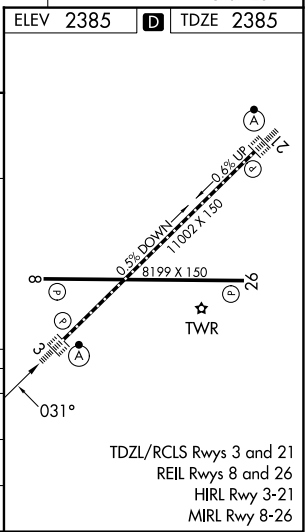
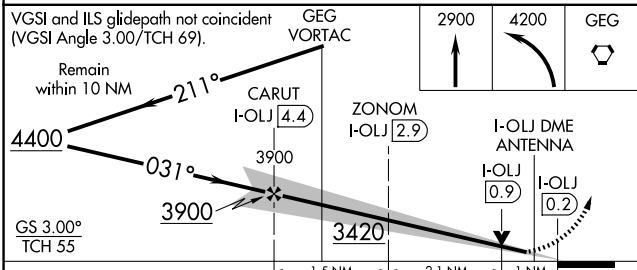
SPOKANE INTL (GEG)

DME required for localizer only. For inop ALS, increase S-LOC 3 Cat C/D visibility to RVR 5500.	ALSF-2 	MISSED APPROACH: Climb to 2900 then climbing left turn to 4200 direct GEG VORTAC and hold, continue climb-in-hold to 4200.
--	------------	--

ATIS 124.325 254.375	SPOKANE APP CON 123.75 282.25 (205°-025°) 133.35 263.0 (026°-204°)	SPOKANE TOWER 118.3 278.3	GND CON 121.9 348.6
--------------------------------	--	-------------------------------------	-------------------------------



ELEV 2385	TDZE 2385
-----------	-----------



CATEGORY	A	B	C	D
S-ILS 3	2585/18 200 (200-½)			
S-LOC 3	2780/24	395 (400-½)	2780/35	395 (400-¾)
CIRCLING	2960-1 575 (600-1)	2980-1 595 (600-1)	3180-2¼ 795 (800-2¼)	3380-3 995 (1000-3)

NW-1, 11 JUN 2026 to 09 JUL 2026

NW-1, 11 JUN 2026 to 09 JUL 2026