

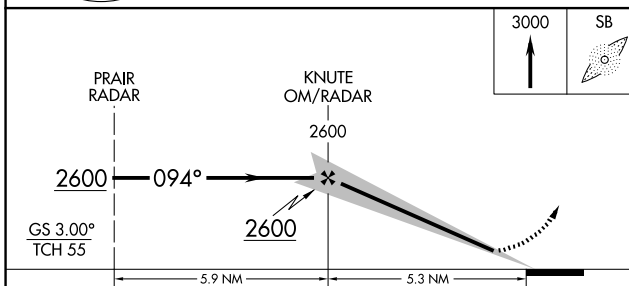
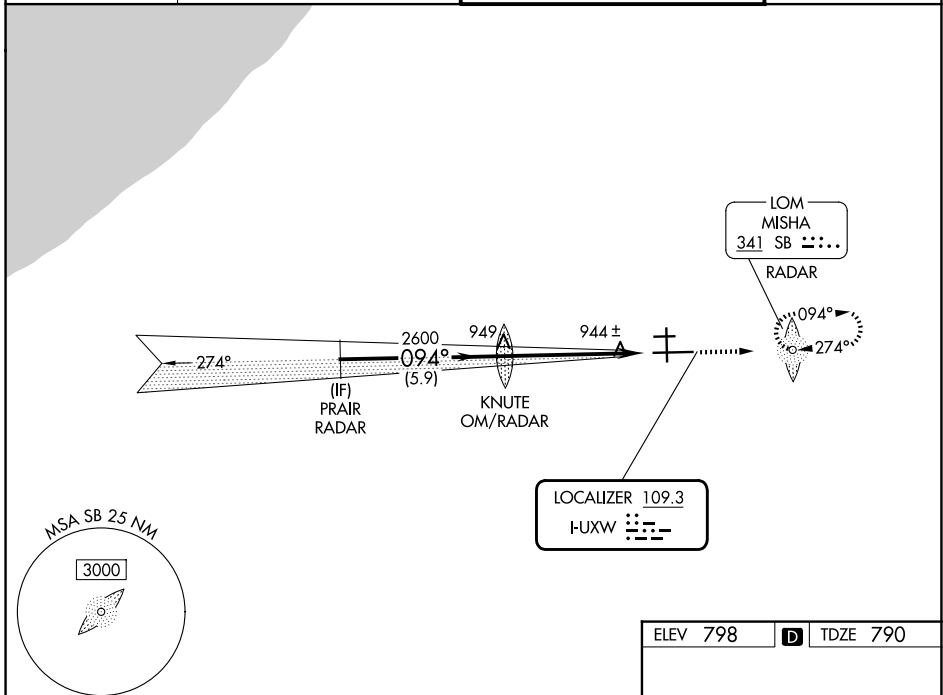
LOC I-UXW 109.3	APP CRS 094°	Rwy Ldg TDZE 8412 790 Apt Elev 798
---------------------------	------------------------	--

ILS or LOC RWY 9R

SOUTH BEND INTL (SBN)

ADF and RADAR required.	MALSF 	MISSED APPROACH: Climb to 3000 direct MISHA LOM/RADAR and hold, continue climb-in-hold to 3000.
Rwy 9R helicopter visibility reduction below RVR 4000 NA. For inop ALS, increase S-ILS 9R visibility all Cats to RVR 5500, increase S-LOC 9R Cats C/D visibility to RVR 6000. Circling Rwy 27R NA at night.		

ATIS 120.675	SOUTH BEND APP CON* 118.55 257.8	SOUTH BEND TOWER* 135.675 (CTAF) 0 257.8	GND CON 121.7
------------------------	--	--	-------------------------



CATEGORY	A	B	C	D
S-ILS 9R	1135/40		345 (400-¾)	
S-LOC 9R	1200/40	410 (500-¾)	1200/50	410 (500-1)
CIRCLING	1280-1	482 (500-1)	1440-1¾ 642 (700-1¾)	1520-2¼ 722 (800-2¼)

ELEV 798	D TDZE 790
----------	-------------------

The chart shows the layout of South Bend International Airport. Runway 9R is the primary runway. Other runways include 27L and 27R. The Tower is located near the intersection of Runway 9R and Runway 27R. Various navigation aids and altitudes are indicated on the chart.

HIRL Rwy 9R-27L	1
MIRL Rwy 18-36	1
MIRL Rwy 9L-27R	1
FAF to MAP 5.3 NM	
Knots	60 90 120 150 180
Min:Sec	5:18 3:32 2:39 2:07 1:46

EC-2, 11 JUN 2026 to 09 JUL 2026

EC-2, 11 JUN 2026 to 09 JUL 2026