

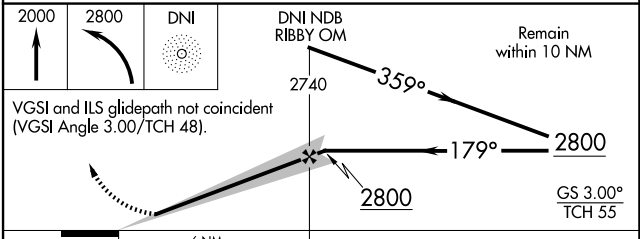
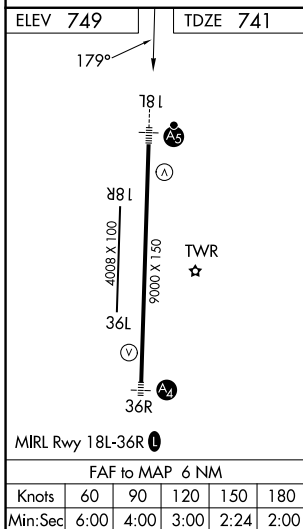
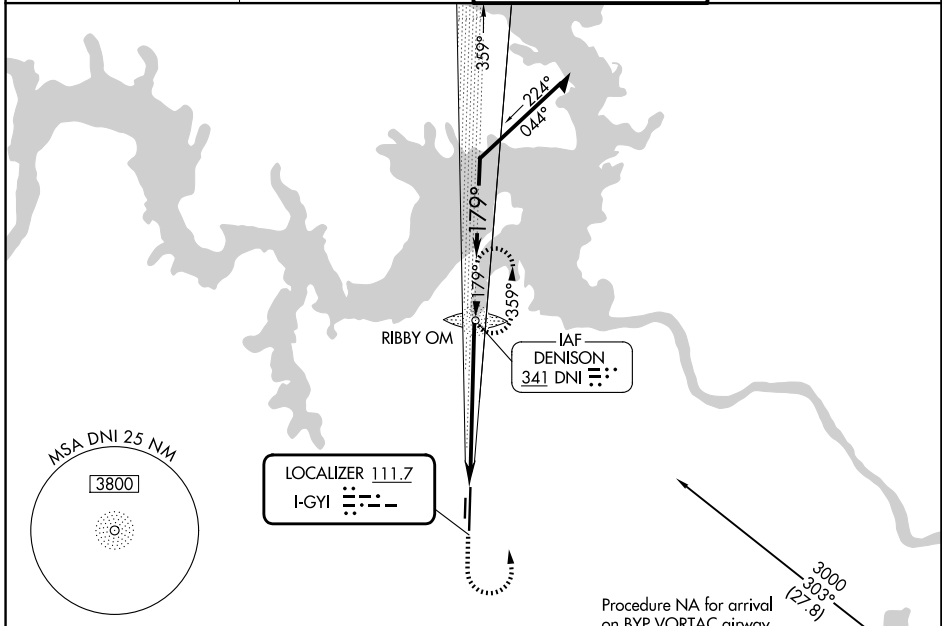
LOC I-GYI 111.7	APP CRS 179°	Rwy Ldg 9000 TDZE 741 Apt Elev 749
---------------------------	------------------------	---

ILS or LOC RWY 18L

NORTH TEXAS RGNL/PERRIN FLD (GYI)

ADF required.	MALSR 	MISSED APPROACH: Climb to 2000 then climbing left turn to 2800 direct DNI NDB and hold.
Circling Rwy 18R, 36L NA at night. Autopilot coupled approach NA below 1900. For inop ALS, increase S-LOC-18L Cat C/D visibility to 1 3/8 SM.		

ATIS 118.775	FORT WORTH CENTER 124.75 323.0	NORTH TEXAS TOWER ★ 120.575 (CTAF) 233.7	GND CON 124.125
------------------------	--	--	---------------------------



CATEGORY	A	B	C	D
S-ILS 18L	941-1/2		200 (200-1/2)	
S-LOC 18L	1220-1/2	479 (500-1/2)	1220-1	479 (500-1)
CIRCLING	1300-1	551 (600-1)	1400-1 3/4 651 (700-1 3/4)	1540-2 1/2 791 (800-2 1/2)

SC-2, 11 JUN 2026 to 09 JUL 2026

SC-2, 11 JUN 2026 to 09 JUL 2026