


LOC/DME I-SHR 108.7 Chan 24	APP CRS 326°	Rwy Ldg 8301 TDZE 3985 Apt Elev 4021
--	------------------------	---

ILS or LOC/DME RWY 33

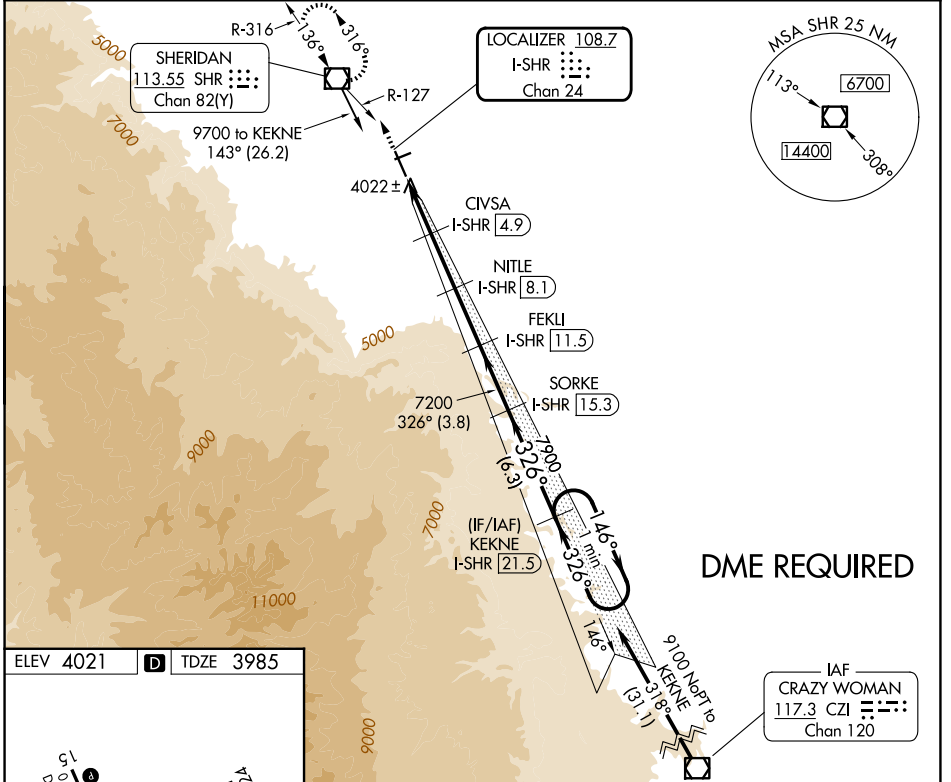
SHERIDAN COUNTY (SHR)

⚠ When local altimeter setting not received, procedure NA.
⚠ Night landing: Rwy 24 NA. For inoperative MALSR, increase S-LOC 33 Cats C and D visibility to ½ mile.

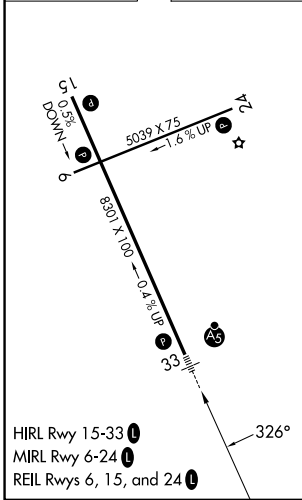
MALSR 

MISSED APPROACH: Climb to 7000 on heading 326° and on SHR VOR/DME R-127 to SHR VOR/DME and hold, continue climb-in-hold to 7000.

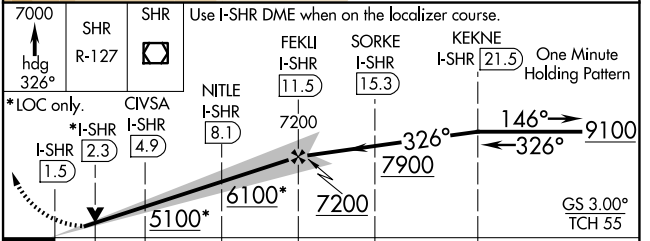
ASOS 135.175	SALT LAKE CENTER 127.75 351.9	UNICOM 123.0 (CTAF)
------------------------	---	-------------------------------



ELEV 4021 **D** TDZE 3985



SHERIDAN, WYOMING
 Amdt 2 25JUN15



CATEGORY	A	B	C	D
S-ILS 33		4185-½	200 (200-½)	
S-LOC 33		4280-½	295 (300-½)	
CIRCLING	4600-1	4640-1	4860-2½	5220-3
	579 (600-1)	619 (700-1)	839 (900-2½)	1199 (1200-3)

SHERIDAN COUNTY (SHR)
 44°46'N-106°59'W **ILS or LOC/DME RWY 33**

NW-1, 11 JUN 2026 to 09 JUL 2026

NW-1, 11 JUN 2026 to 09 JUL 2026