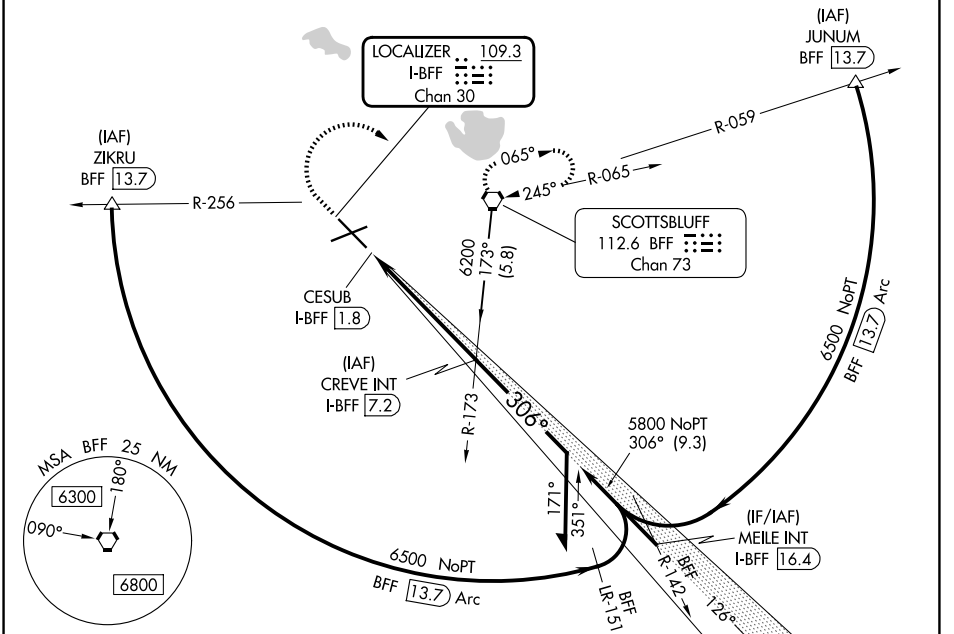


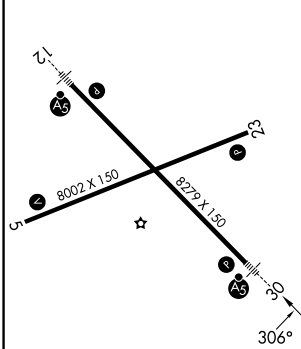
LOC/DME I-BFF <b>109.3</b> Chan <b>30</b>	APP CRS <b>306°</b>	Rwy Ldg <b>8279</b> TDZE <b>3952</b> Apt Elev <b>3967</b>
---	------------------------	---

**ILS or LOC RWY 30**  
SCOTTSBLUFF/WESTERN NEBRASKA RGNL/WM B HEILIG FLD (B'F'F')

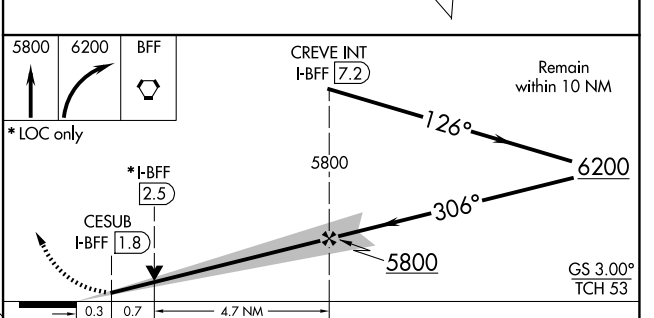
<p><b>▲</b> For inop ALS, increase S-LOC 30 Cats C and D visibility to 1 SM.</p>	<p>MALSR </p>	<p>MISSED APPROACH: Climb to 5800 then climbing right turn to 6200 direct BFF VORTAC and hold.</p>
<p>ASOS <b>121.025</b></p>	<p>DENVER CENTER <b>127.95 338.2</b></p>	<p>UNICOM <b>123.0 (CTAF) 0</b></p>



ELEV <b>3967</b>	<b>D</b>	TDZE <b>3952</b>
------------------	----------	------------------



HIRL Rwy 12-30 <b>0</b>					
MIRL Rwy 5-23 <b>0</b>					
FAF to MAP 5.4 NM					
Knots	60	90	120	150	180
Min:Sec	5:24	3:36	2:42	2:10	1:48



CATEGORY	A	B	C	D
S-ILS 30	4152-½ 200 (200-½)			
S-LOC 30	4300-½ 348 (400-½)	4300-⅝ 348 (400-⅝)		
CIRCLING	4500-1 533 (600-1)	4560-1½ 593 (600-1½)	4740-2½ 773 (800-2½)	

**ILS or LOC RWY 30**

NC-2, 11 JUN 2026 to 09 JUL 2026

NC-2, 11 JUN 2026 to 09 JUL 2026