

LOC/DME I-SNA 111.75 Chan 54(Y)	APP CRS 196°	Rwy Ldg TDZE Apt Elev	5700 54 56
-----------------------------------------------------	------------------------	-----------------------------	---------------------------------------

ILS or LOC RWY 20R

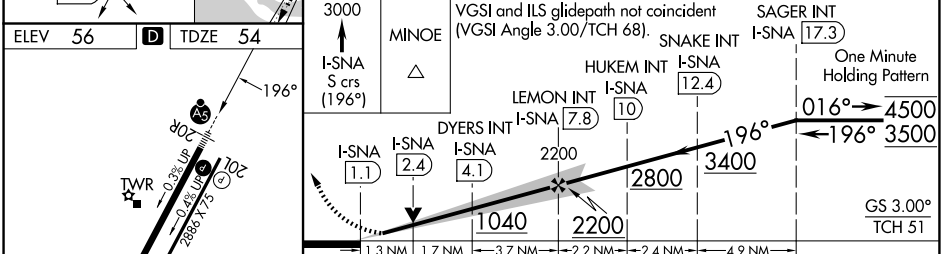
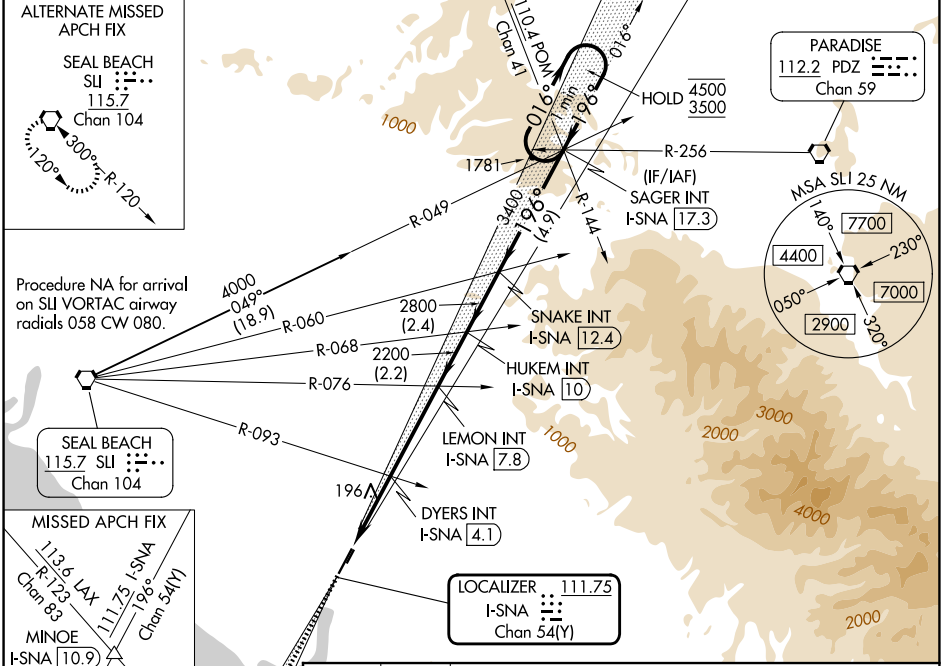
JOHN WAYNE/ORANGE COUNTY (SNA)

⚠ Circling Rwy 20L NA at night.
* RVR 1800 authorized with the use of FD or AP or HUD to DA.

MALSR

MISSED APPROACH: Climb to 3000 on I-SNA LOC south course (196°) to MINOE INT/I-SNA 10.9 DME.

D-ATIS 126.0	SOCAL APP CON 121.3 263.1	JOHN WAYNE TOWER* 126.8 (CTAF) 0 343.625	GND CON 120.8	UNICOM 122.95
------------------------	-------------------------------------	-----------------------------------------------------------	-------------------------	-------------------------



ELEV 56	D	TDZE 54	3000	MINOE	VGSI and ILS glidepath not coincident (VGSI Angle 3.00°/TCH 68).	SAGER INT I-SNA 17.3	One Minute Holding Pattern
I-SNA S crs (196°)		HUKEM INT I-SNA 10		SNAKE INT I-SNA 12.4		GS 3.00° TCH 51	
1.3 NM		1.7 NM		3.7 NM		2.2 NM	
2.4 NM		4.9 NM					
CATEGORY	A		B		C		D
S-ILS 20R*	255/24 201 (200-½)						
S-LOC 20R	1040/40 986 (1000-¾)		1040/55 986 (1000-1)		1040-2½		986 (1000-2½)
CIRCLING	1040-1¼ 984 (1000-1¼)		1040-1½ 984 (1000-½)		1040-3		1180-3 1124 (1200-3)
DYERS FIX MINIMUMS (DUAL VOR RECEIVERS OR DME REQUIRED)							
S-LOC 20R	460/24		406 (500-½)		460/40		406 (500-¾)
CIRCLING	640-1		584 (600-1)		840-2¼ 784 (800-2¼)		1180-3 1124 (1200-3)

SW-3, 11 JUN 2026 to 09 JUL 2026

SW-3, 11 JUN 2026 to 09 JUL 2026