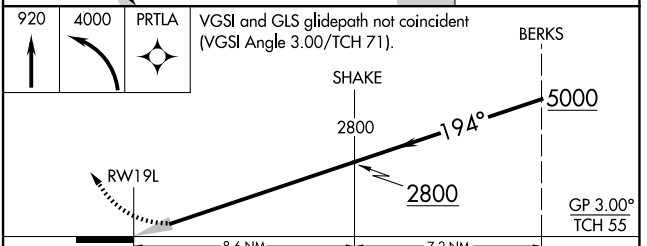
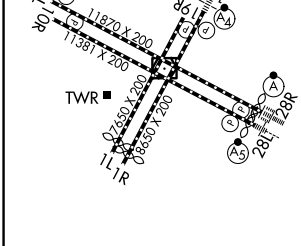
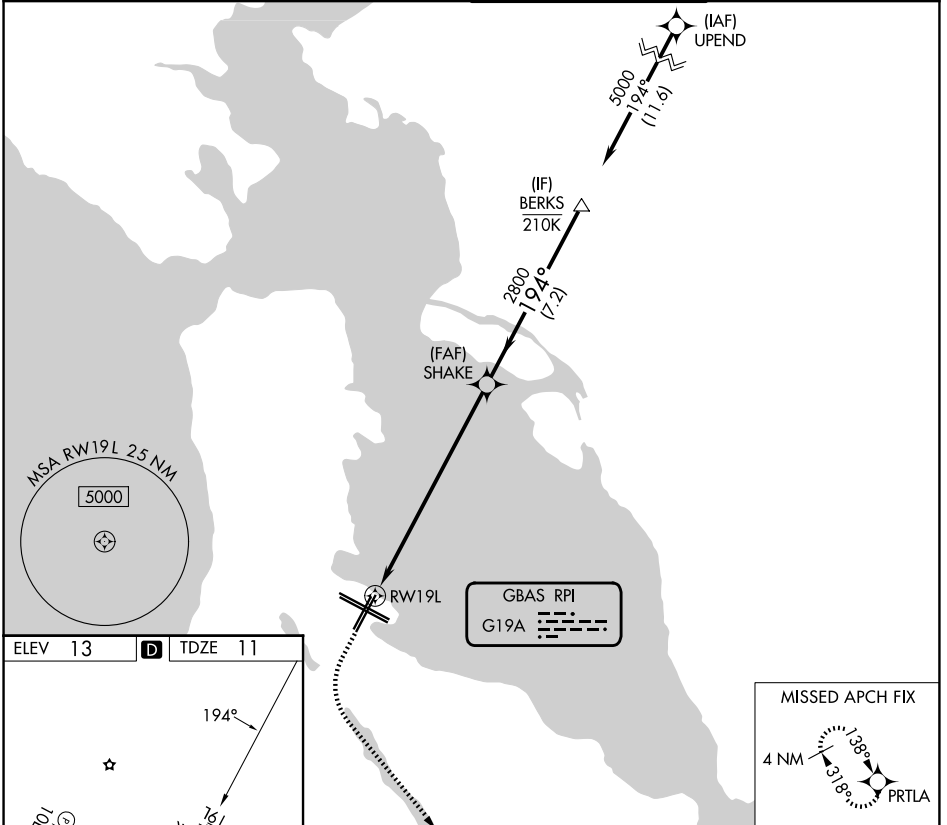


GBAS CH <b>21448</b> <b>G19A</b>	APP CRS <b>194°</b>	Rwy Ldg TDZE <b>11</b> Apt Elev <b>13</b>	<b>8650</b>
--	------------------------	---	-------------

# GLS RWY 19L

SAN FRANCISCO INTL (SFO)

RNP APCH-GPS.		MALSF	MISSED APPROACH: Climb to 920 then climbing left turn to 4000 direct PRTLA and hold. Missed approach requires minimum climb of 357 feet per NM to 2000.
<p>Autopilot coupled approach NA below 293 feet. For inop ALS, increase GLS visibility to RVR 4500.</p>			
D-ATIS <b>113.7 115.8 118.85</b>	NORCAL APP CON <b>134.5 338.2</b>	SAN FRANCISCO TOWER <b>120.5 269.1</b>	GND CON <b>121.8</b>



TDZL/RCLS Rwy 19L and 28R		REIL Rwy 1L, 1R and 10L		HIRL all rwy's	
CATEGORY	A	B	C	D	
GLS DA	293/40		282 (300-3/4)		

SW-2, 11 JUN 2026 to 09 JUL 2026

SW-2, 11 JUN 2026 to 09 JUL 2026