


LOC/DME I-SAN <b>111.55</b> Chan 52 (Y)	APP CRS <b>095°</b>	Rwy Ldg <b>7280</b> TDZE <b>17</b> Apt Elev <b>17</b>
---	------------------------	---

# ILS Y or LOC Y RWY 9

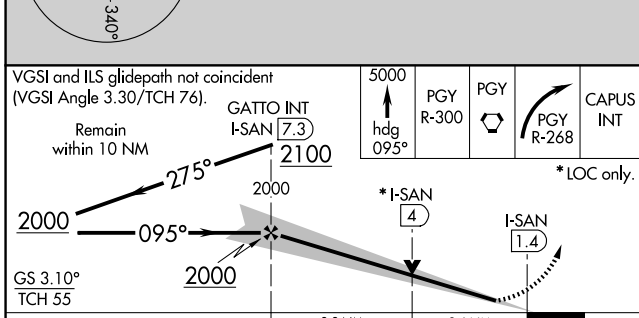
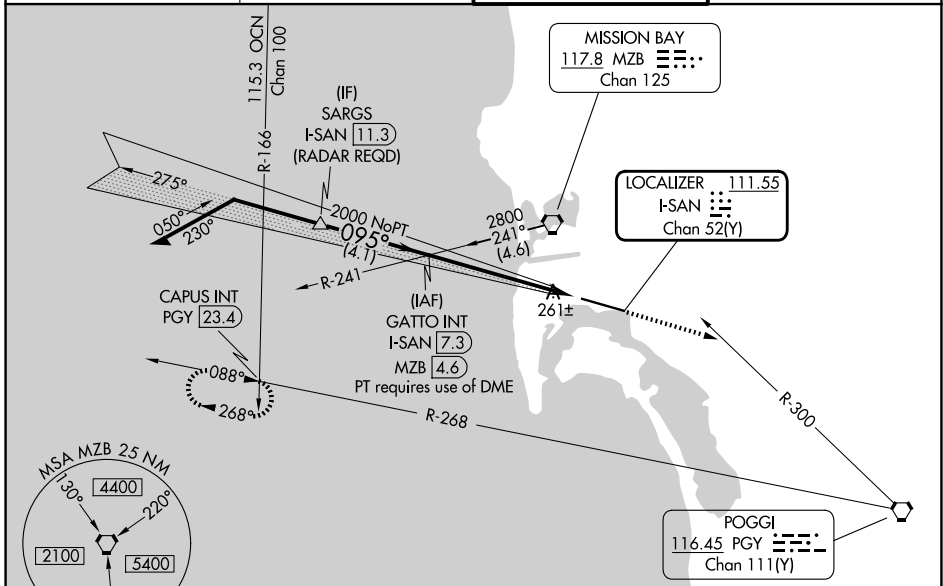
SAN DIEGO INTL (SAN)

**⚠** Circling NA north of Rwy 9-27. Autopilot coupled approach NA below 530. When Circling to Rwy 27 at night, operational VGSI required, remain on or above VGSI glidepath until threshold. For inop ALS, increase S-ILS 9 all Cats visibility to 2½ SM. Rwy 9 helicopter visibility reduction below RVR 4000 NA. #Inop table does not apply to S-ILS 9.

**MALS R**  


**MISSED APPROACH:** Climb to 5000 on heading 095° and on PGY VORTAC R-300 to PGY VORTAC, then right turn on PGY VORTAC R-268 to CAPUS INT/23.4 DME and hold. #Missed approach requires minimum climb of 270 feet per NM to 4000.

D-ATIS <b>134.8</b>	SOCAL APP CON <b>119.6 363.1 (W)</b> <b>124.35 279.625 (E)</b>	LINDBERGH TOWER <b>118.3 338.225</b>	GND CON <b>123.9</b>
------------------------	--	---	-------------------------



ELEV 17	<b>D</b> TDZE 17
---------	------------------

CATEGORY	A	B	C	D
S-ILS 9#	258/40		241 (300-¾)	
S-ILS 9	751-2		734 (800-2)	
S-LOC 9	960/40 943 (1000-¾)		960-2 943 (1000-2)	
CIRCLING	960-1¼ 943 (1000-1¼)		960-2¾ 943 (1000-2¾)	
			960-3 943 (1000-3)	

