

WAAS CH 42747 W28A	APP CRS 280°	Rwy Ldg TDZE Apt Elev	4677 570 578
--	------------------------	-----------------------------	---

RNAV (GPS) RWY 28

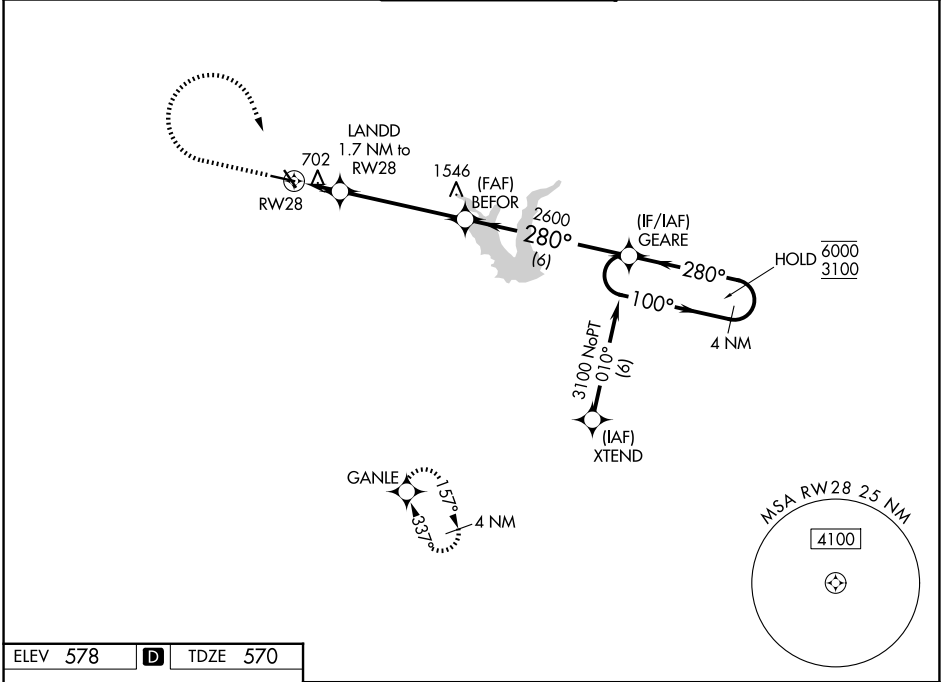
STINSON MUNI (SS1F)

RNP APCH - GPS.

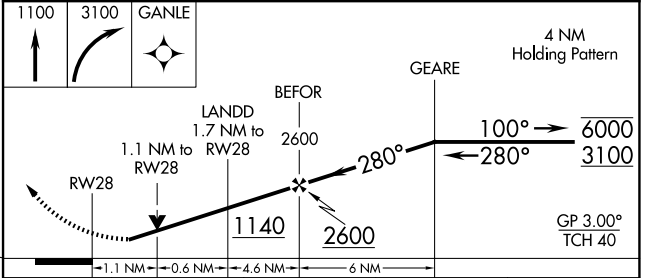
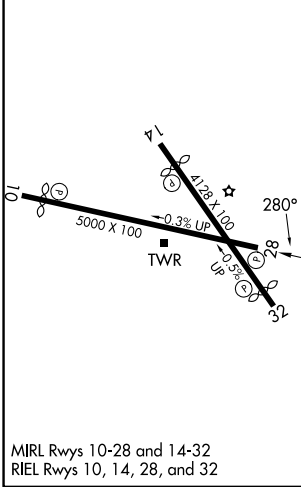
▼ Circling Rwy 10 NA at night. Rwy 28 helicopter visibility reduction below 3/4 SM NA.
▲ For uncompensated Baro-VNAV systems, LNAV/VNAV NA below -4°C or above 54°C.

MISSED APPROACH: Climb to 1100 then climbing right turn to 3100 direct GANLE and hold.

ATIS 128.8	SAN ANTONIO APP CON 125.7 290.225	STINSON TOWER * 118.2 (CTAF) 379.9	GND CON 121.7 379.9	UNICOM 122.95
----------------------	---	--	-------------------------------	-------------------------



ELEV 578	D	TDZE 570
----------	----------	----------



CATEGORY	A	B	C	D
LPV DA	820-3/4	250 (300-3/4)		NA
LNAV/VNAV DA	900-1	330 (400-1)		NA
LNAV MDA	960-1	390 (400-1)	960-1 1/8 390 (400-1 1/8)	NA
CIRCLING	1040-1 462 (500-1)	1120-1 542 (600-1)	1260-2 682 (700-2)	NA

MIRL Rwy 10-28 and 14-32
RIEL Rwy 10, 14, 28, and 32

SAN ANTONIO, TEXAS
Orig 07AUG25

29°20'N-98°28'W

RNAV (GPS) RWY 28

SC-3, 11 JUN 2026 to 09 JUL 2026

SC-3, 11 JUN 2026 to 09 JUL 2026