

HI-ILS or LOC/DME Z RWY 16

LOC I-SKF 110.1	APCH CRS 158°	Rwy Idg 11,550
		TDZE 690
		Arprt Elev 690

[USAF]

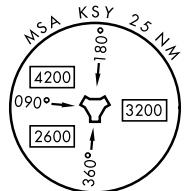
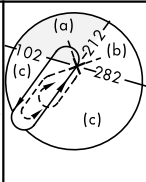
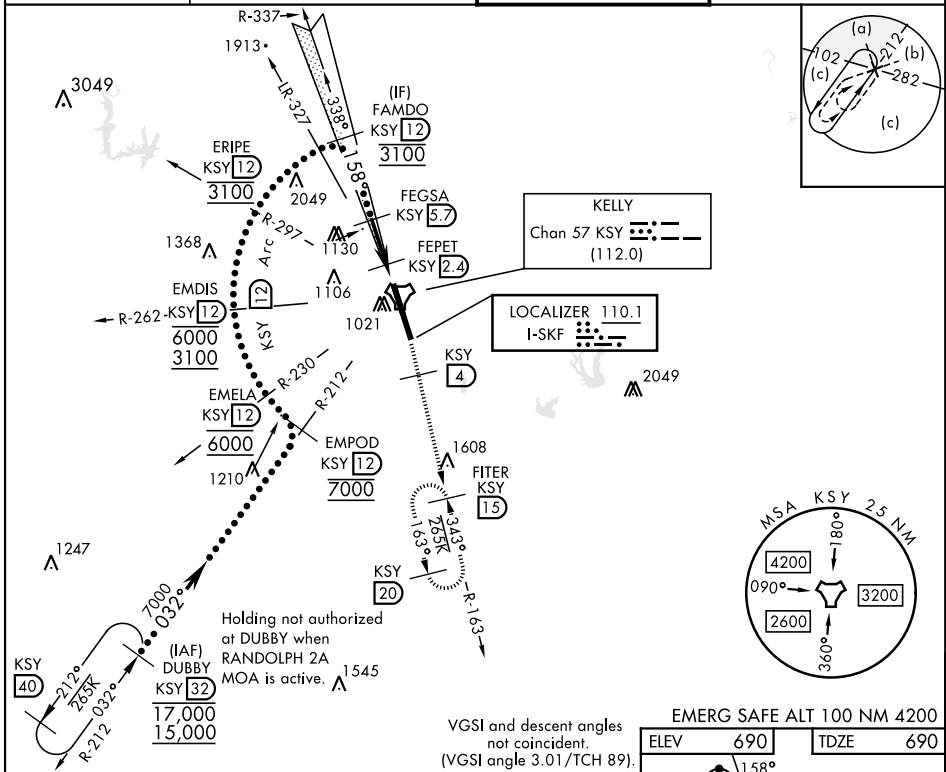
KELLY FLD (KSKF)

▼ *When ALS inop, increase RVR to 40 and vis to 3/4 mile.
 **When ALS inop, increase RVR to 60 and vis to 1 1/2 miles.
 ***Circling not authorized E of Rwy 16-34.



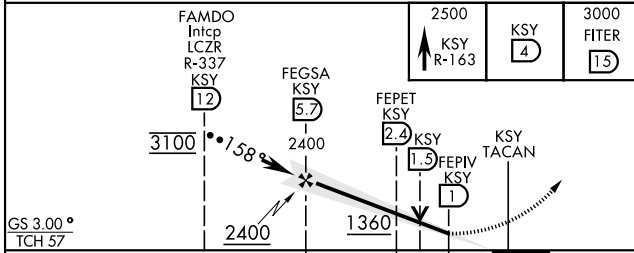
MISSED APPROACH: Climb to 2500 via KSY R-163 until 4 DME, then continue climb to 3000 to FITER/1.5 DME and hold.

ATIS 120.45 273.5	SAN ANTONIO APP CON 118.05 353.5	KELLY TOWER 124.3 322.35	GND CON 121.8 289.4
-----------------------------	--	------------------------------------	-------------------------------

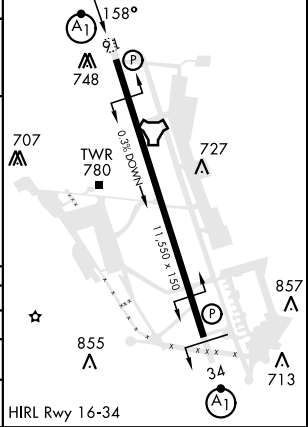


SC-3, 11 JUN 2026 to 09 JUL 2026

SC-3, 11 JUN 2026 to 09 JUL 2026



ELEV 690	TDZE 690
----------	----------



CATEGORY	C	D	E
S-ILS 16 *	890/24	200	(200-1/2)
S-LOC/ DME 16 **	1080/35	390	(400-3/4)
CIRCLING ***	1340-134 650 (700-134)	1900-3	1210 (1300-3)

HI-ILS or LOC/DME Z RWY 16