

HI-VOR Z or TACAN RWY 21

VORTAC SJT 115.1 Chan 98	APCH CRS 235°	Rwy Idg TDZE Arpt Elev 5939 1906 1919
--	-------------------------	---

[USAF]

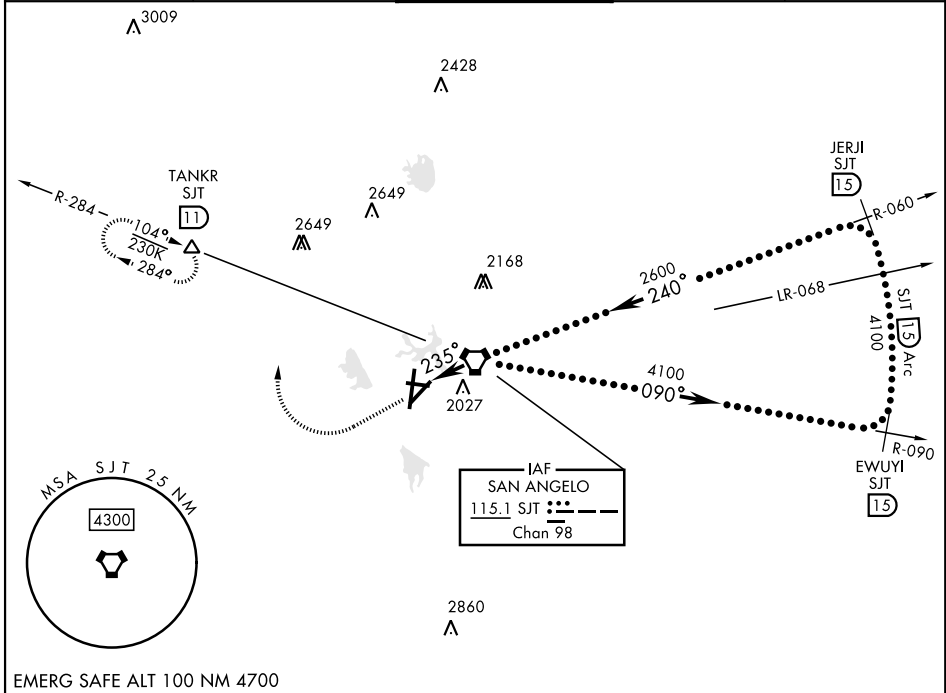
SAN ANGELO RGNL/MATHIS FLD (KSJT)

DME required

MISSED APPROACH: Climb to 3000 then climbing right turn to 4400 on heading 360° and SJT VORTAC R-284 to TANKR INT/11 DME and hold, continue climb-in-hold to 4400.

*Circling not authorized for CAT D W of Rwy 18-36.

ATIS 128.45 319.0	SAN ANGELO APP CON ★ 125.35 354.1	MATHIS TOWER ★ 118.3 (CTAF) 284.7	GND CON 121.9 348.6	UNICOM 122.95
-----------------------------	---	--	-------------------------------	-------------------------



SC-3, 11 JUN 2026 to 09 JUL 2026

SC-3, 11 JUN 2026 to 09 JUL 2026

EMERG SAFE ALT 100 NM 4700

VGSI and descent angles not coincident (VGSI Angle 3.00/TCH 52). SJT VORTAC 12,000 090° 4100 EWUYI SJT 15 4100 JERJI SJT 15 4100 240° 2600 235° PAPI SJT 1.8 3.34° TCH 59 1.8 NM	3000 ↑	4400 hdg 360°	SJT R-284	TANKR SJT 11	ELEV 1919 TDZE 1906 Rwy 18 Idg 7150' Rwy 36 Idg 7152' 81 1907
CATEGORY C D E					
S-21 2300-1 1/8 394 (400-1 1/8)					
CIRCLING* 2500-1 1/2 581 (600-1 1/2) 2580-2 661 (700-2) NOT AUTHORIZED					

HI-VOR Z or TACAN RWY 21

REIL Rwy 18
HIRL Rwy 3-21
MIRL Rwy 9-27, 18-36