

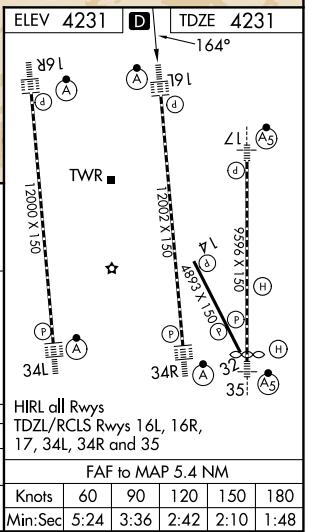
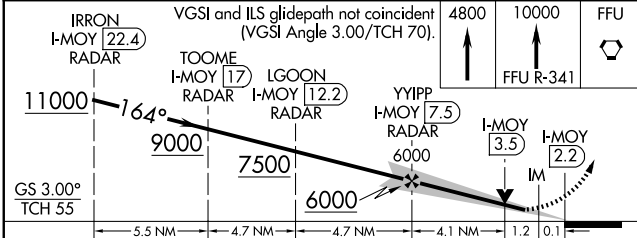
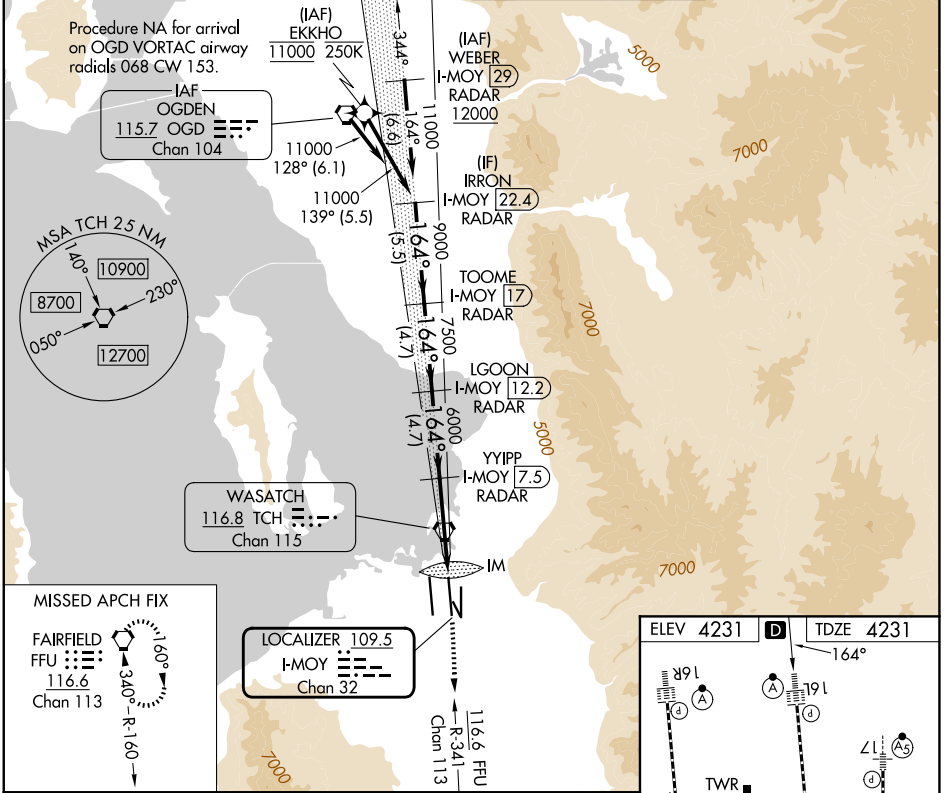
LOC/DME I-MOY 109.5 Chan 32	APP CRS 164°	Rwy Ldg 12002 TDZE 4231 Apt Elev 4231
---	------------------------	--

ILS or LOC RWY 16L

SALT LAKE CITY INTL (SLC)

RNP APCH-GPS. From EKKHO.	ALSIF-2 	MISSED APPROACH: Climb to 4800 then climb to 10000 on FFU VORTAC R-341 to FFU VORTAC and hold.
DME or RADAR required. RADAR required for procedure entry at WEBER.		
Simultaneous approach authorized. For inop ALS, increase S-LOC 16L Cat C/D visibility to 1 3/8 SM.		

D-ATIS 124.75 125.625	SALT LAKE CITY APP CON 125.7 284.6	SALT LAKE CITY TOWER 119.05 257.8	GND CON 123.775 348.6
---------------------------------	--	---	---------------------------------



CATEGORY	A	B	C	D
S-ILS 16L		4431/18	200 (200-1/2)	
S-LOC 16L	4720/24	489 (500-1/2)	4720/50	489 (500-1)

SW-4, 11 JUN 2026 to 09 JUL 2026

SW-4, 11 JUN 2026 to 09 JUL 2026