

LOC/DME I-OGZ <b>111.95</b> Chan 56(Y)	APP CRS <b>123°</b>	Rwy Ldg TDZE Apt Elev	<b>9000</b> <b>618</b> <b>618</b>
--	------------------------	-----------------------------	---

# ILS or LOC RWY 11

ST LOUIS LAMBERT INTL (STL)

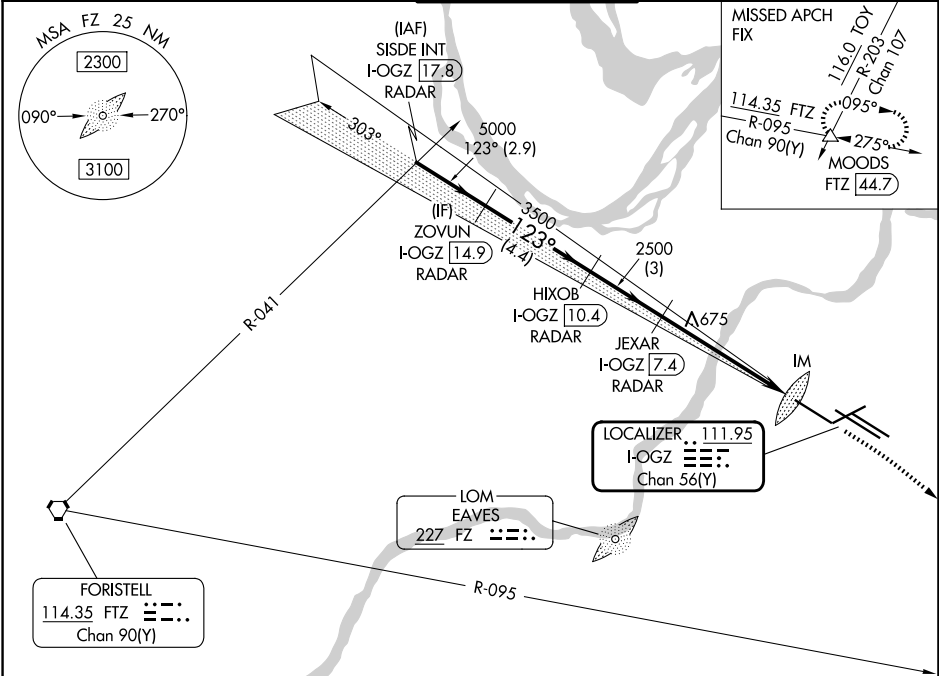
**RADAR required for procedure entry. DME or RADAR required.**

Simultaneous approach authorized with Rwy 12R/L. Disregard OM signal associated with ILS to Rwy 12R. For inop ALS, increase S-ILS Cat E visibility to RVR 4000, and S-LOC Cat C/D/E visibility to RVR 5500.



**MISSED APPROACH:** Climb to 1060 then climbing right turn to 3000 on heading 130° and FTZ R-095 to MOODS INT/FTZ 44.7 DME and hold.

D-ATIS <b>125.025 379.925</b>	ST. LOUIS APP CON <b>132.125 360.6</b>	ST. LOUIS TOWER <b>132.475 239.275</b>	GND CON <b>121.9 348.6</b> (Inbound) <b>121.65 377.175</b> (Outbound) <b>118.925 227.125</b> (11/29)
----------------------------------	---	---	---



VGSIs and ILS glidepath not coincident (VGS Angle 3.00/TCH 67).					1060	3000	FTZ R-095	MOODS
SISDE INT I-OGZ 17.8 RADAR	ZOVUN I-OGZ 14.9 RADAR	HIXOB I-OGZ 10.4 RADAR	JEXAR I-OGZ 7.4 RADAR	*LOC only	↑	hdg 130°	△	
5000	5000	3500	2500	2500				
GS 3.00° TCH 55								
	2.9 NM	4.4 NM	3 NM	4.6 NM	0.9 NM	0.1		
CATEGORY	A	B	C	D	E			
S-ILS 11	818/18 200 (200-½)							
S-LOC 11	980/24	362 (400-½)	980/35 362 (400-¾)					

ELEV 618 **D** TDZE 618

Rwy 6-24 7603 X 150  
Rwy 11-29 9000 X 150  
Rwy 12L-30R 9013 X 150  
Rwy 12R-30L 11020 X 150

HRL all rwys  
TDZL/RCLS Rwy 11, 12L, 12R, 29, and 30R

FAF to MAP 5.6 NM

Knots	60	90	120	150	180
Min:Sec	5:36	3:44	2:48	2:14	1:52

NC-3, 11 JUN 2026 to 09 JUL 2026

NC-3, 11 JUN 2026 to 09 JUL 2026