

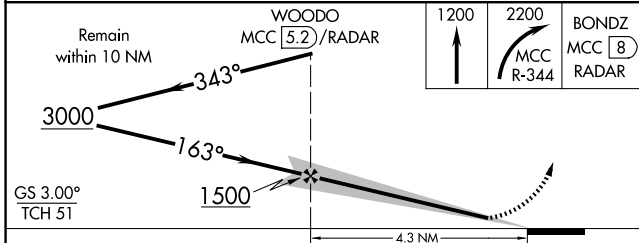
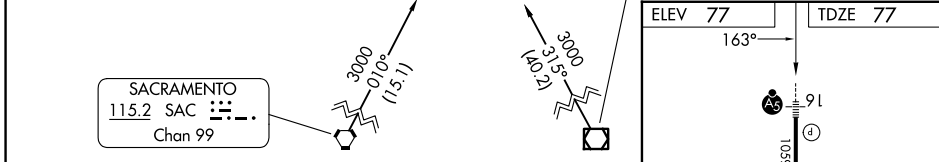
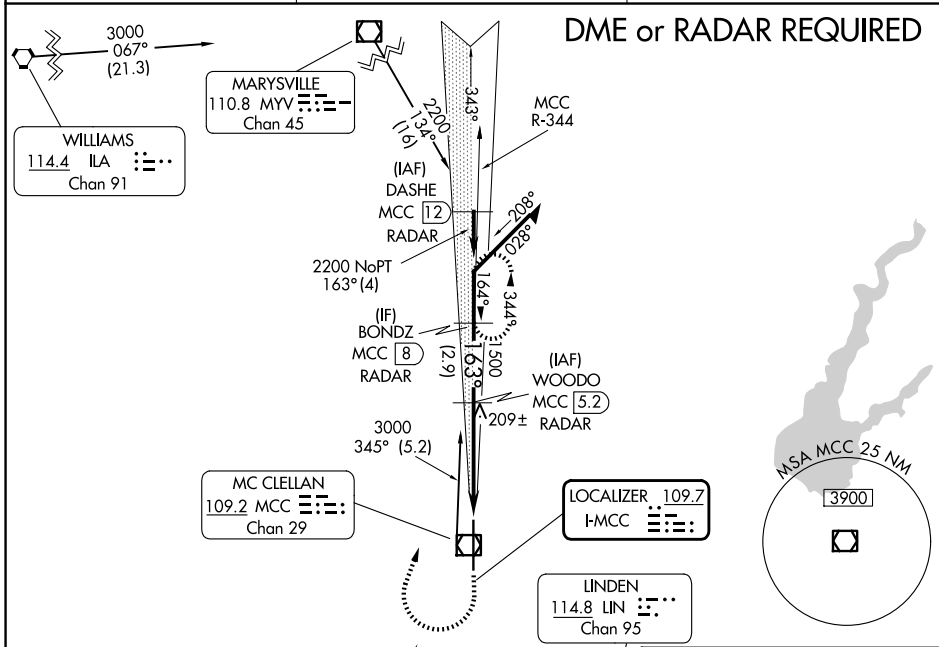
LOC I-MCC 109.7	APP CRS 163°	Rwy Ldg TDZE Apt Elev	10599 77 77
---------------------------	------------------------	-----------------------------	--

ILS or LOC RWY 16

MC CLELLAN AIRFIELD (MCC)

NA DME from MCC VOR/DME. If local altimeter setting is not received, use Sacramento Intl altimeter setting and increase all DH/MDAs 40 feet.	MALSRR MCC	MISSED APPROACH: Climb to 1200 then climbing right turn to 2200 via MCC VOR/DME R-344 to BONDZ/MCC 8 DME/RADAR and hold.
---	---------------	--

AWOS-3 125.975	NORCAL APP CON 127.4 317.5	UNICOM 122.975 (CTAF) 0
--------------------------	--------------------------------------	--



CATEGORY	A	B	C	D
S-ILS 16		277-1/2	200 (200-1/2)	
S-LOC 16		460-1/2	383 (400-1/2)	460-3/4 383 (400-3/4)
CIRCLING	NA			

ELEV 77	TDZE 77
163°	
91	
10599 X 1.50	
34	
HIRL Rwy 16-34 0	
FAF to MAP 4.3 NM	
Knots	60 90 120 150 180
Min:Sec	4:18 2:52 2:09 1:43 1:26

SW-2, 11 JUN 2026 to 09 JUL 2026

SW-2, 11 JUN 2026 to 09 JUL 2026