

ILS or LOC RWY 2

RICHMOND INTL (RIC)

LOC I-EZD 110.9	APP CRS 023°	Rwy Ldg TDZE Apt Elev 6607 161 168
---------------------------	------------------------	--

▼ Rwy 2 helicopter visibility reduction below ¼ SM NA. For inop ALS, increase S-ILS 2 all Cats visibility to ½ SM and S-LOC 2 Cats A and B visibility to 1 SM.

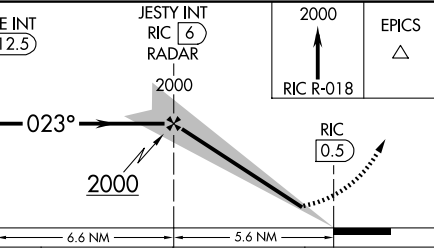
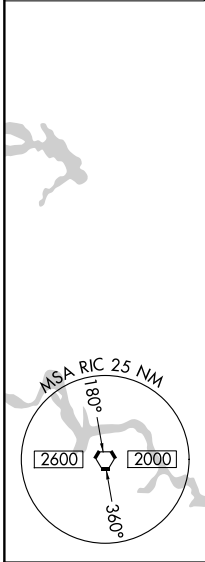
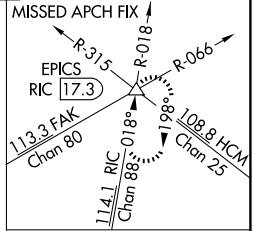
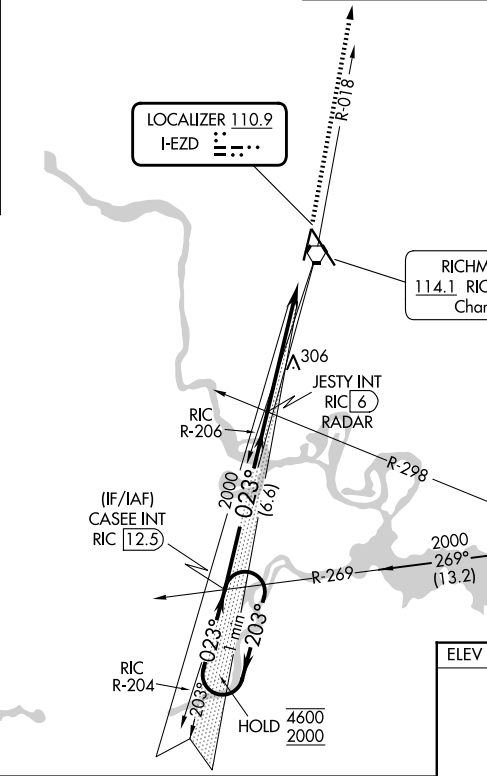
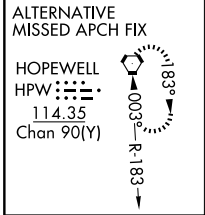
MALSRR
MISSED APPROACH: Climb to 2000 on RIC VORTAC R-018 to EPICS INT/ RIC 17.3 DME and hold.

ATIS 119.15 263.025

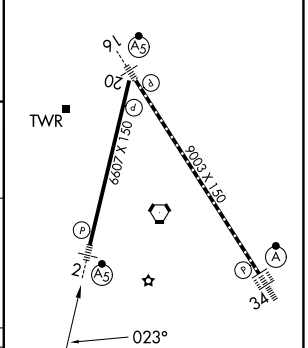
POTOMAC APP CON 126.4 282.375 (001°-185°) 126.75 307.2 (186°-360°)
--

RICHMOND TOWER 121.1 257.8

GND CON 121.9 348.6



ELEV 168	D TDZE 161
----------	-------------------



One Minute Holding Pattern	CASEE INT RIC 12.5	JESTY INT RIC 6 RADAR	2000 RIC R-018	EPICS △
4600 ← 203°	2000 → 023°	2000	RIC 0.5	
GS 3.00°	TCH 50	2000		
	6.6 NM	5.6 NM		

CATEGORY	A	B	C	D
S-ILS 2	457-¾ 296 (300-¾)			
S-LOC 2	560-¾ 399 (400-¾)			
CIRCLING	660-1 492 (500-1)	700-1½ 532 (600-1½)		720-2 552 (600-2)

TDZ/CL Rwy 34 HIRL Rwys 2-20 and 16-34 REIL Rwy 20				
FAF to MAP 5.6 NM				
Knots	60	90	120	150 180
Min:Sec	5:36	3:44	2:48	2:14 1:52

NE-3, 11 JUN 2026 to 09 JUL 2026

NE-3, 11 JUN 2026 to 09 JUL 2026