

LOC/DME I-PVD <b>109.3</b> Chan 30	APP CRS <b>047°</b>	Rwy Ldg <b>8700</b> TDZE <b>53</b> Apt Elev <b>54</b>
--	------------------------	---

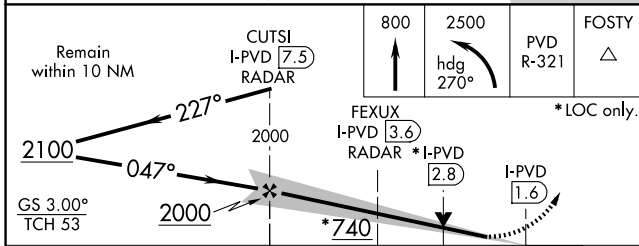
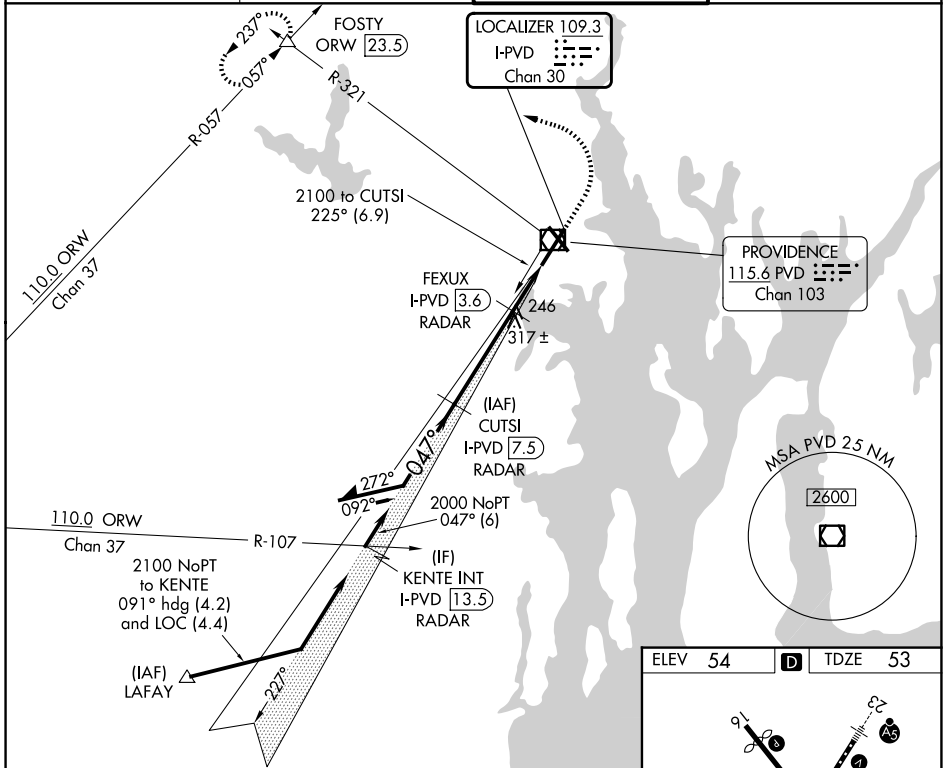
# ILS or LOC RWY 5

RHODE ISLAND TF GREEN INTL (PVD)

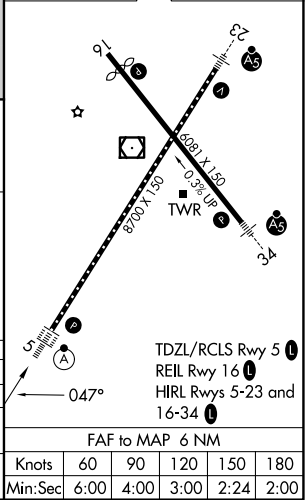
▼ When tower closed: increase S-ILS 5 all Cats and S-LOC 5 Cats A and B visibilities to 3/4 SM, and S-LOC 5 Cats C and D visibility to 1 SM.  
 ▲ When control tower closed, for inop ALS, increase S-LOC 5 Cats C and D visibility to 1 1/2 SM. RADAR or DME required for localizer minimums.

ALS-F/2 MISSED APPROACH: Climb to 800 then climbing left turn to 2500 on heading 270° and PVD VOR/DME R-321 to FOSTY INT/ORW 23.5 DME and hold.

D-ATIS <b>124.2</b>	PROVIDENCE APP CON * <b>123.675 244.875</b>	PROVIDENCE TOWER * <b>120.7 (CTAF) 257.8</b>	GND CON <b>121.9 348.6</b>
------------------------	--	---	-------------------------------



ELEV 54	D	TDZE 53
---------	---	---------



CATEGORY	A	B	C	D
S-ILS 5	253/18		200 (200-1/2)	
S-LOC 5	500/24 447 (500-1/2)		500/45 447 (500-3/4)	
CIRCLING	560-1 506 (600-1)	640-1 586 (600-1)	640-1 1/2 586 (600-1 1/2)	860-2 1/2 806 (900-2 1/2)

FAF to MAP 6 NM					
Knots	60	90	120	150	180
Min:Sec	6:00	4:00	3:00	2:24	2:00

NE-1, 11 JUN 2026 to 09 JUL 2026

NE-1, 11 JUN 2026 to 09 JUL 2026