

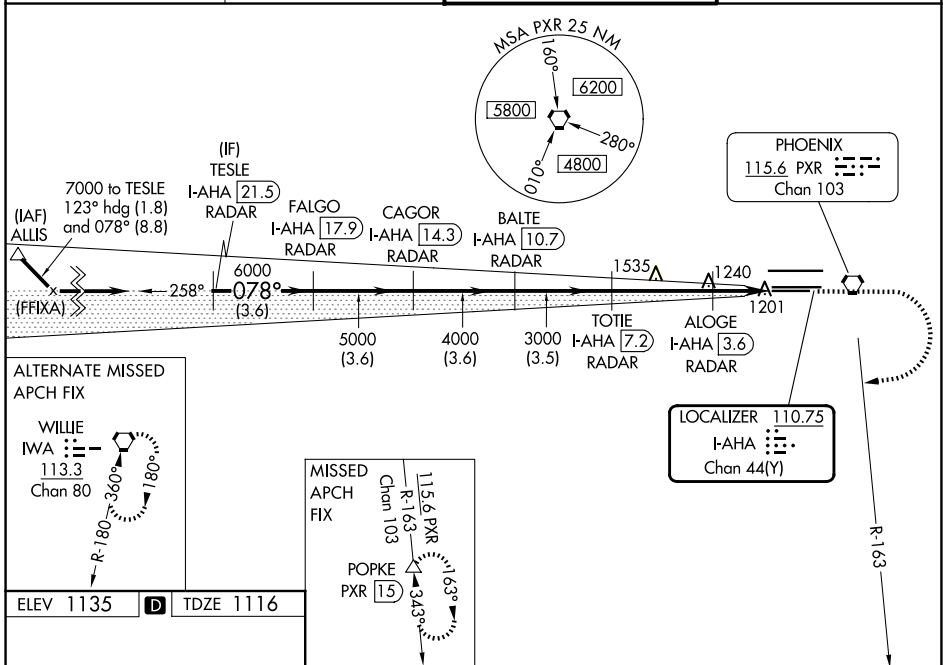
LOC/DME I-AHA 110.75 Chan 44 (Y)	APP CRS 078°	Rwy Ldg 7800 TDZE 1116 Apt Elev 1135
--	------------------------	---

ILS or LOC RWY 7R

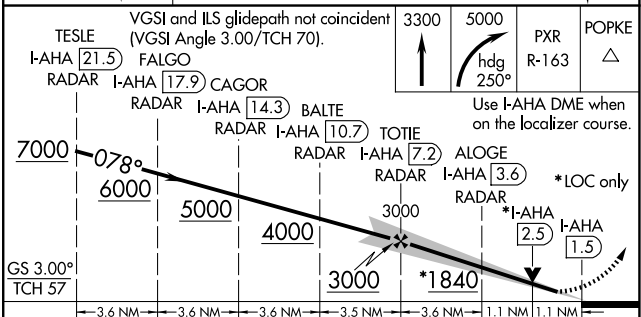
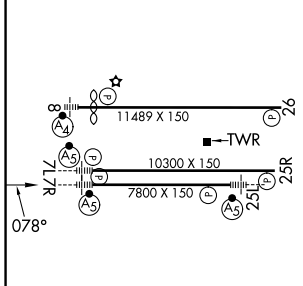
PHOENIX SKY HARBOR INTL (PHX)

DME required.	MALSR 	MISSED APPROACH: Climb to 3300 then climbing right turn to 5000 on heading 250° and PXR VORTAC R-163 to POPKE/PXR 15 DME and hold.
⚠ Inop table does not apply to S-ILS 7R. Simultaneous approach authorized with ILS or LOC Rwy 8 and RNAV (GPS) Y Rwy 8. Rwy 7R helicopter visibility reduction below 3/4 SM NA. LOC procedure NA during simultaneous operations. For inop ALS, increase S-LOC 7R visibility Cats A/B to 1 SM and Cats C/D to 1 1/2 SM.		

D-ATIS 127.575	PHOENIX APP CON 128.65 353.9	PHOENIX TOWER 118.7 278.8 (8-26) 120.9 254.3 (7L-25R, 7R-25L)	GND CON 119.75 269.2 (N) 132.55 269.2 (S)
--------------------------	--	---	---



ELEV 1135	D	TDZE 1116
-----------	----------	-----------



HIRL Rwy 8-26, 7L-25R and 7R-25L REIL Rwy 26					
FAF to MAP 5.8 NM					
Knots	60	90	120	150	180
Min:Sec	5:48	3:52	2:54	2:19	1:56
CATEGORY	A	B	C	D	
S-ILS 7R	1369-3/4		253 (300-3/4)		
S-LOC 7R	1520-3/4		404 (400-3/4)		
CIRCLING	1740-1 605 (700-1)		2040-2 3/4 905 (1000-2 3/4)		2560-3 1425 (1500-3)