


LOC/DME I-PNS <b>111.1</b> Chan <b>48</b>	APP CRS <b>169°</b>	Rwy Ldg <b>7004</b> TDZE <b>121</b> Apt Elev <b>121</b>
---	------------------------	---

# ILS or LOC RWY 17

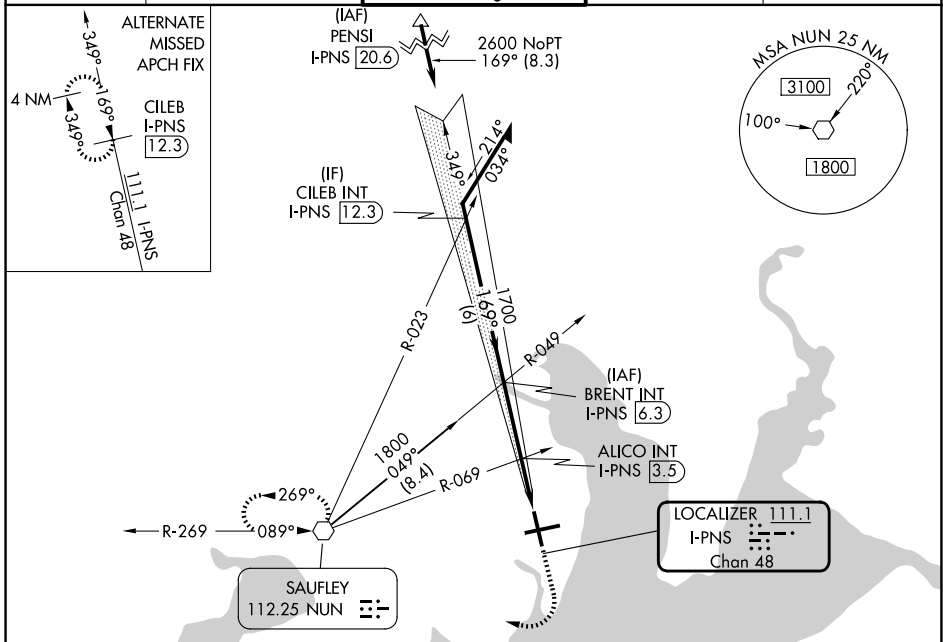
PENSACOLA INTL (PNS)

**⚠** For inop ALS, increase S-LOC 17 Cats A/B to RVR 5500 and Cats C/D to 1 1/4 SM. ALICO FIX MINIMUMS: For inop ALS increase S-LOC 17 all Cats visibility to RVR 5500.  
**CAUTION:** Intensive VFR student training in vicinity of airport.

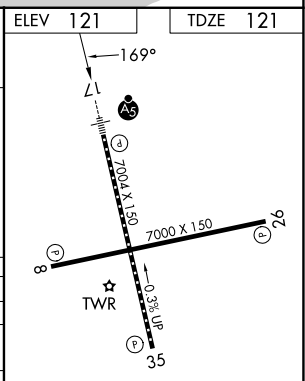
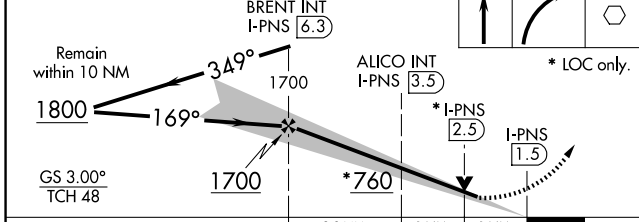
**MALSR** 

**MISSED APPROACH:** Climb to 600 then climbing right turn to 3000 direct NUN VOR and hold, continue climb-in-hold to 3000.

ATIS <b>121.25</b>	PENSACOLA APP CON <b>119.0 269.375</b>	PENSACOLA TOWER ★ <b>119.9 (CTAF) 0 257.8</b>	GND CON <b>121.9 348.6</b>	UNICOM <b>122.95</b>
-----------------------	---	--	-------------------------------	-------------------------



ELEV 121	TDZE 121
----------	----------



CATEGORY	A	B	C	D
S-ILS 17	321/18 200 (200-1/2)			
S-LOC 17	760/24	639 (700-1/2)	760-13/8	639 (700-13/8)
CIRCLING	760-1	639 (700-1)	860-2 739 (800-2)	860-2 1/4 739 (800-2 1/4)
ALICO FIX MINIMUMS (DUAL VOR RECEIVERS OR DME REQUIRED)				
S-LOC 17	480/24	359 (400-1/2)	480/30	359 (400-5/8)
CIRCLING	580-1 459 (500-1)	680-1 559 (600-1)	860-2 739 (800-2)	860-2 1/4 739 (800-2 1/4)

REIL Rwys 8, 26 and 35	TDZL/RCLS Rwy 17 <b>0</b>
HRL Rwys 8-26 and 17-35 <b>0</b>	FAF to MAP 4.8 NM
Knots	60 90 120 150 180
Min:Sec	4:48 3:12 2:24 1:55 1:36

SE-3, 11 JUN 2026 to 09 JUL 2026

SE-3, 11 JUN 2026 to 09 JUL 2026