

LOC I-PDT 110.3	APP CRS 254°	Rwy Ldg TDZE Apt Elev	6301 1487 1497
---------------------------	------------------------	-----------------------------	---

ILS or LOC RWY 26

EASTERN OREGON RGNL AT PENDLETON (PDT)

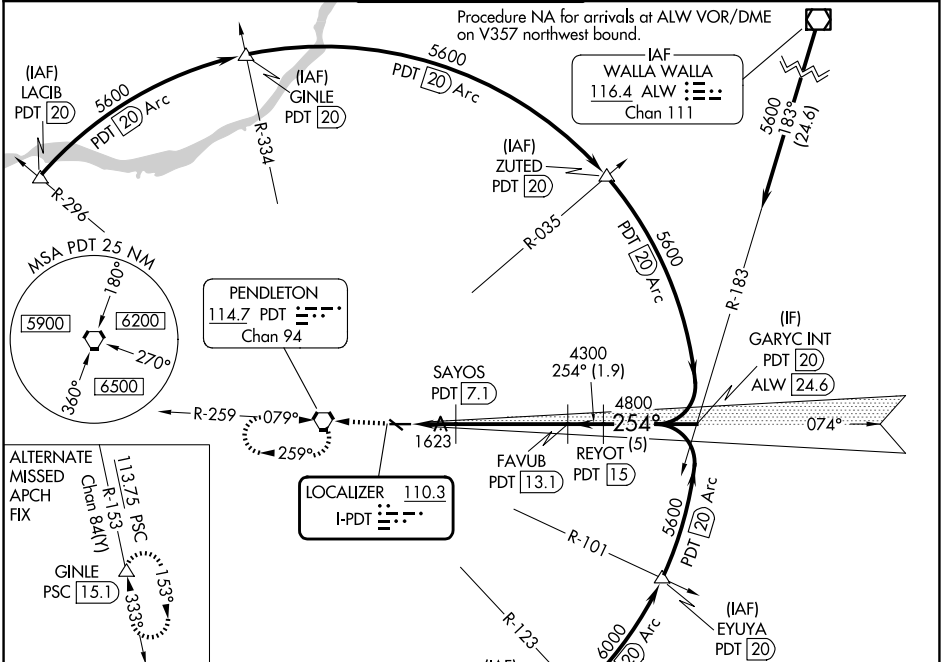
DME required.

▼ DME from PDT VORTAC. Simultaneous reception of I-PDT and PDT DME required.
▲ *RVR 1800 authorized with use of FD or AP or HUD to DA.

MALSR

MISSED APPROACH: Climb to 4200 direct PDT VORTAC and hold, continue climb-in-hold to 4200.

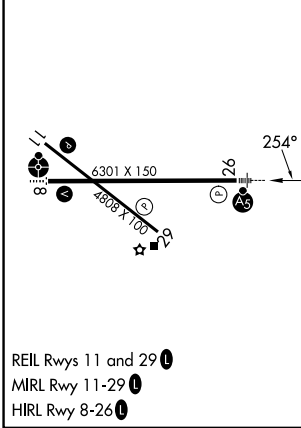
ASOS 118.325	SPOKANE APP CON * 133.15 379.15	PENDLETON TOWER * 119.7 (CTAF) 257.8	GND CON 121.9 257.8	UNICOM 122.95
------------------------	---	--	-------------------------------	-------------------------



NW-1, 11 JUN 2026 to 09 JUL 2026

NW-1, 11 JUN 2026 to 09 JUL 2026

ELEV 1497	D	TDZE 1487
-----------	----------	-----------



4200	PDT	VGSI and ILS glidepath not coincident (VGSI Angle 3.00/TCH 48).	REYOT PDT 15	GARYC INT PDT 20
2320	PDT 4.6	SAYOS PDT 7.1	FAVUB PDT 13.1	4800
4300	PDT 5.7	4300	4300	5600
1.1 NM	1.4 NM	6 NM	1.9 NM	5 NM
GS 3.00°	TCH 55			

CATEGORY	A	B	C	D
S-ILS 26*	1687/24 200 (200-½)			
S-LOC 26	1880/24	393 (400-½)	1880/40	393 (400-¾)
CIRCLING	1920-1	1960-1	1980-1½	2200-2¼
	423 (500-1)	463 (500-1)	483 (500-1½)	703 (800-2¼)