

APP CRS	Rwy Ldg	3798
338°	TDZE	796
	Apt Elev	796

RNAV (GPS) RWY 33

PEMBINA MUNI (PMB)

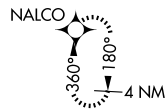
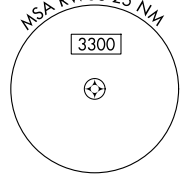
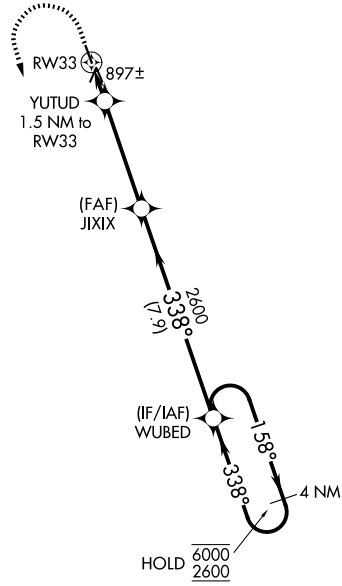
RNP APCH-GPS.

⚠ NA Circling Rwy 15 NA at night. Obtain local altimeter setting on CTAF; when not received, use Hallock altimeter setting and increase all MDA 60 feet and LNAV Cat C visibility ¼ SM.

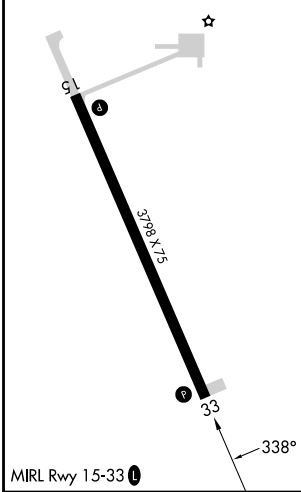
MISSED APPROACH: Climb to 1200 then climbing left turn 2600 direct NALCO and hold.

MINNEAPOLIS CENTER **132.15 269.6**

UNICOM **122.8 (CTAF) 0**



ELEV 796	TDZE 796
----------	----------



1200	2600	NALCO	VGSi and descent angles not coincident (VGSi Angle 3.00/TCH 26).	
↑	↶	✦	JIXIX	WUBED 4 NM Holding Pattern
	YUTUD 1.5 NM to RW33	↘ 3.00° TCH 40	← 338° 2600	→ 158° 6000
	RW33	↙ 1320	← 338° 2600	← 338° 2600
	1.5	4.1 NM	7.9 NM	
CATEGORY	A	B	C	D
LNAV MDA	1160-1 364 (400-1)			NA
CIRCLING	1200-1 404 (500-1)	1260-1 464 (500-1)	1260-1½ 464 (500-1½)	NA

NC-1, 11 JUN 2026 to 09 JUL 2026

NC-1, 11 JUN 2026 to 09 JUL 2026