

HI-ILS Y or LOC Y RWY 25

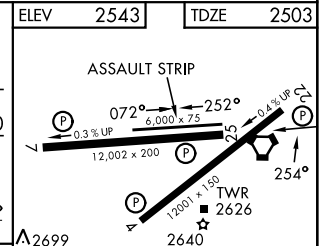
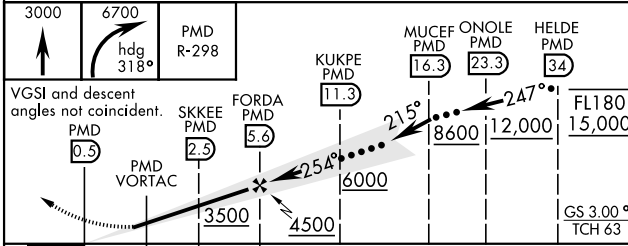
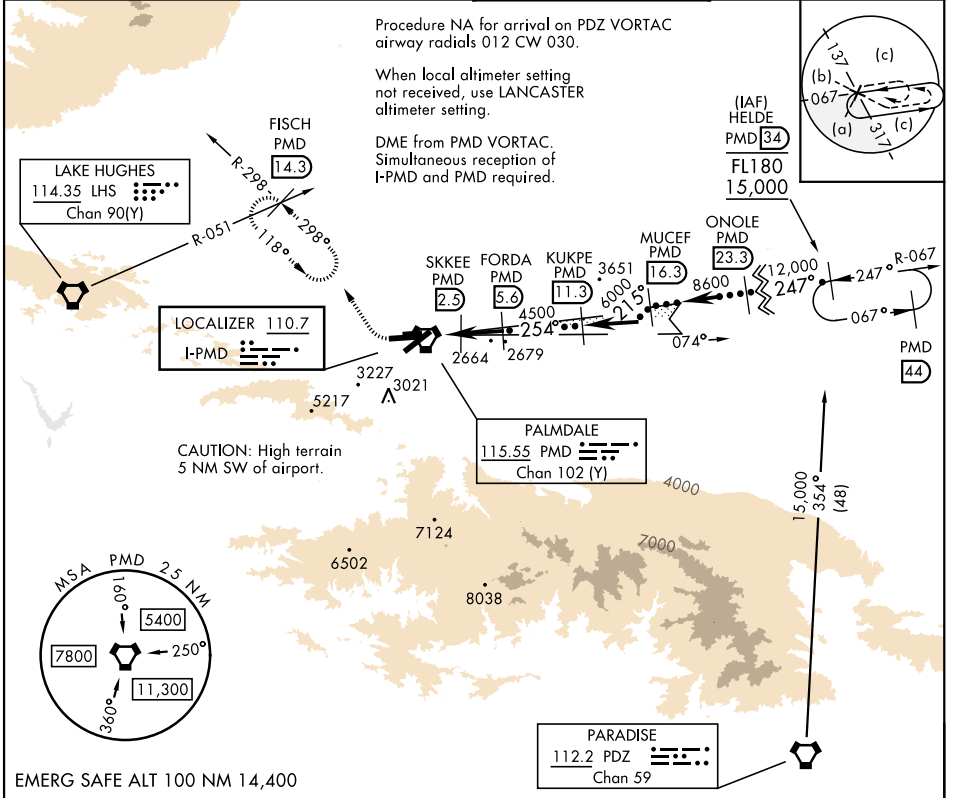
LOC I-PMD 110.7	APCH CRS 254°	Rwy Idg 12,002
		TDZE 2503
		Arpt Elev 2543

[USAF]

PALMDALE USAF PLANT 42 (KPMD)

DME required	MISSED APPROACH: Climb to 3000 then climbing right turn on heading 318° and PMD VORTAC R-298 to FISCH INT/PMD 14.3 DME/RADAR and hold, continue climb-in-hold to 6700.
⚠ *Circling not authorized S of Rws 4 and 25.	

ATIS 118.275	JOSHUA APP CON 124.55 363.0	TOWER* 123.7 (CTAF) 317.6	GND CON 121.9 317.6
------------------------	---------------------------------------	-------------------------------------	-------------------------------



CATEGORY	C	D	E
S-ILS 25	2703-3/4	200	(200-3/4)
S-LOC 25	2820-7/8	317	(300-7/8)
CIRCLING*	3140-1 1/2	3740-3	3760-3
	597 (600-1 1/2)	1197 (1200-3)	1217 (1300-3)

ELEV	2543	TDZE	2503
HIRL Rwy 4-22, 7-25			
FAF to MAP 6.1 NM			
Knots	60	90	120 150 180
Min:Sec	6:06	4:04	3:03 2:26 2:02

HI-ILS Y or LOC Y RWY 25

SW-3, 11 JUN 2026 to 09 JUL 2026

SW-3, 11 JUN 2026 to 09 JUL 2026