

WAAS CH 42701 W17A	APP CRS 173°	Rwy Ldg 6014 TDZE 1351 Apt Elev 1354
--	------------------------	---

RNAV (GPS) RWY 17R

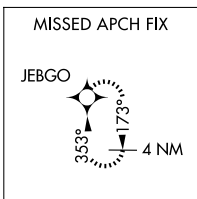
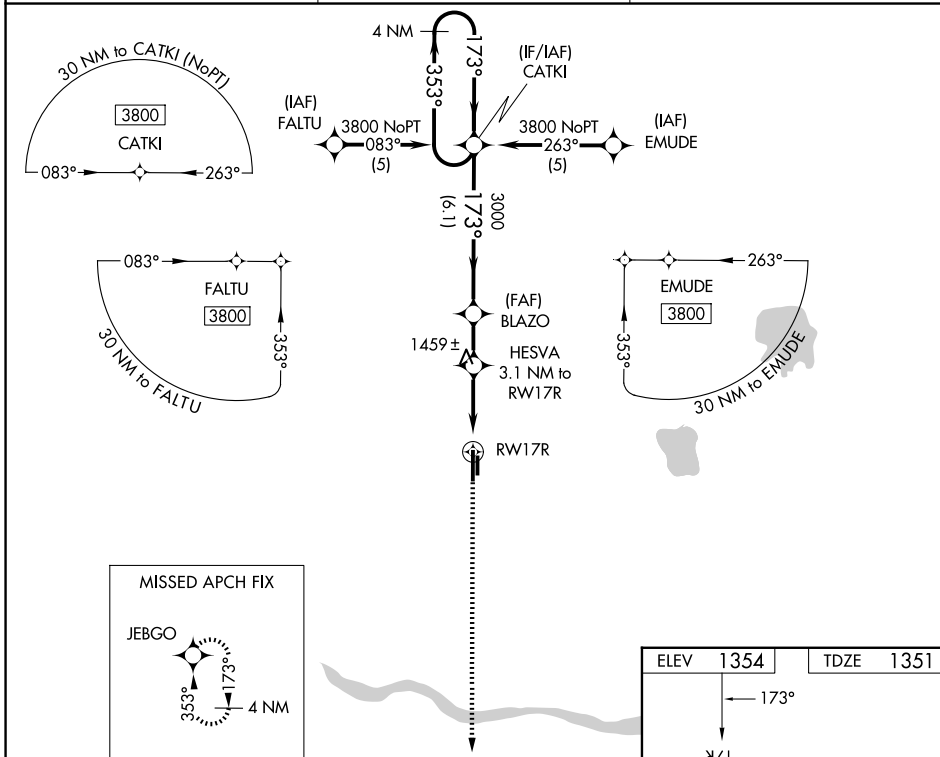
CLARENCE E PAGE MUNI (R/C/E)

▼ DME/DME RNP-0.3 NA. When local altimeter setting not received, use Wiley Post altimeter setting and increase all DA 29 feet and all MDA 40 feet and increase LPV all Cats visibility ¼ mile. VDP NA when using Wiley Post altimeter setting.

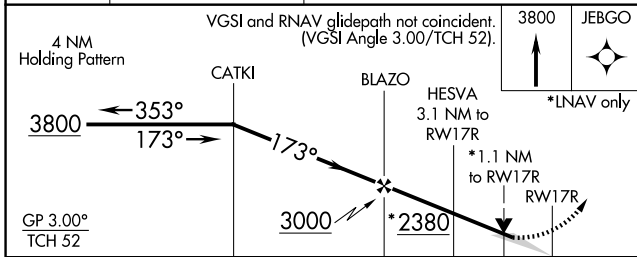
▲

MISSED APPROACH: Climb to 3800 direct JEBGO and hold.

AWOS-3 125.05	OKE CITY APP CON 124.6 266.8	UNICOM 123.0 (CTAF)
-------------------------	--	-------------------------------



ELEV	1354	TDZE	1351
<p>173°</p> <p>17R</p> <p>35L</p> <p>601.4 X 100</p> <p>3502 X 75</p> <p>35R</p> <p>35L</p>			
<p>MIRL Rwy 17L-35R</p> <p>HIRL Rwy 17R-35L</p>			



CATEGORY	A	B	C	D
LPV DA	1601-¾ 250 (300-¾)			NA
LNNAV MDA	1760-1	409 (500-1)	1760-1¼ 409 (500-1¼)	NA
CIRCLING	1800-1 446 (500-1)	1820-1 466 (500-1)	1840-1½ 486 (500-1½)	NA

SC-1, 11 JUN 2026 to 09 JUL 2026

SC-1, 11 JUN 2026 to 09 JUL 2026