

LOC/DME I-ORF 109.1 Chan 28	APP CRS 047°	Rwy Ldg 7809 TDZE 26 Apt Elev 26
--	------------------------	---

ILS or LOC RWY 5

NORFOLK INTL (ORF)

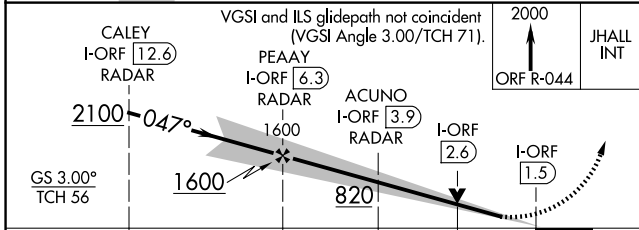
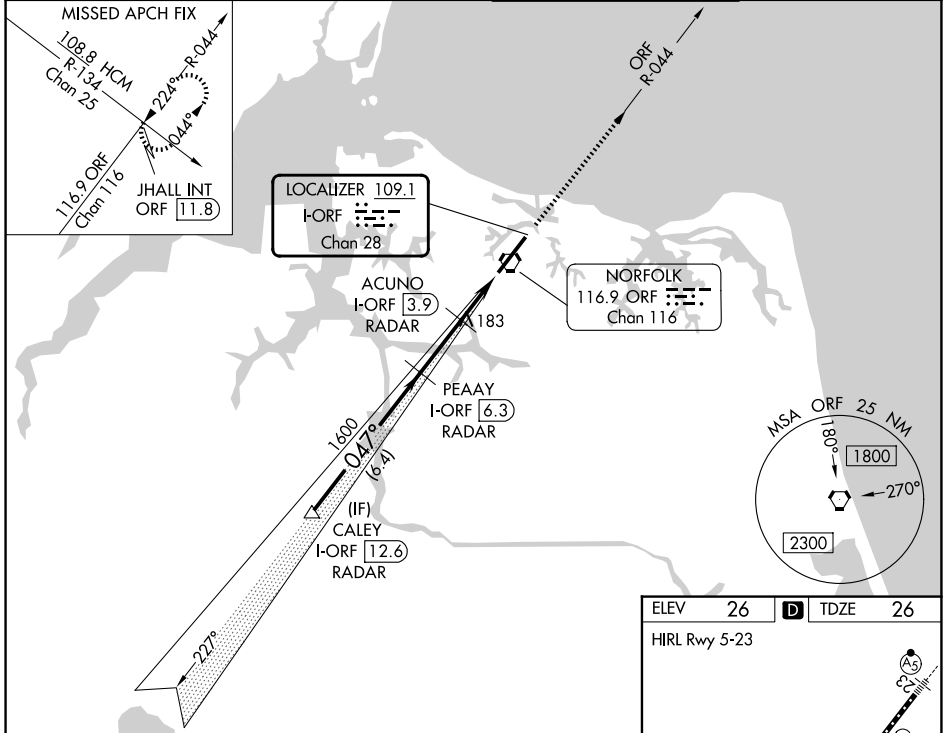
DME or RADAR required. RADAR required for procedure entry.

Autopilot coupled approach NA below 1180.
For inop ALS, increase S-LOC 5 Cat C and D visibility to RVR 6000.
* RVR 1800 authorized with use of FD or AP or HUD to DA.

MALSR

MISSED APPROACH: Climb to 2000 on ORF VORTAC R-044 to JHALL INT/ORF 11.8 DME and hold.

ATIS 127.15	NORFOLK APP CON 118.9 353.7	NORFOLK TOWER 120.8 257.8	GND CON 121.9
-----------------------	---------------------------------------	-------------------------------------	-------------------------



ELEV 26	TDZE 26
HIRL Rwy 5-23	
FAF to MAP 4.8 NM	
Knots	60 90 120 150 180
Min:Sec	4:48 3:12 2:24 1:55 1:36

CATEGORY	A	B	C	D
S-ILS 5*		226/24	200 (200-½)	
S-LOC 5	440/24	414 (500-½)	440/40	414 (500-¾)
CIRCLING	480-1 454 (500-1)	540-1 514 (600-1)	540-1½ 514 (600-1½)	900-2¾ 874 (900-2¾)

NE-3, 11 JUN 2026 to 09 JUL 2026

NE-3, 11 JUN 2026 to 09 JUL 2026