

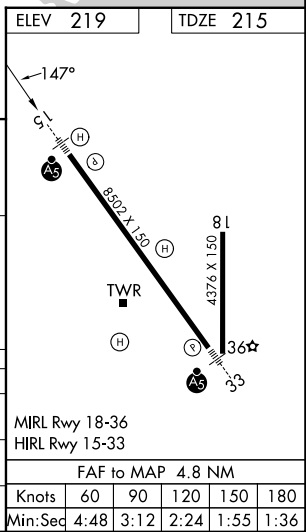
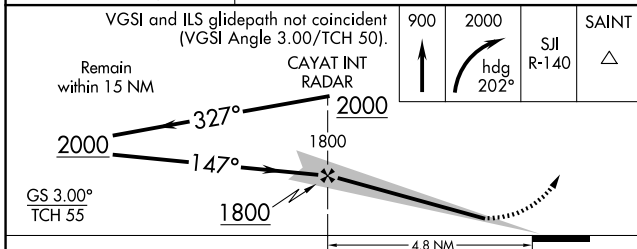
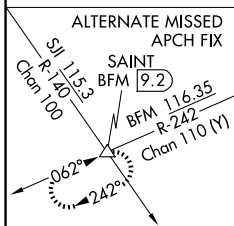
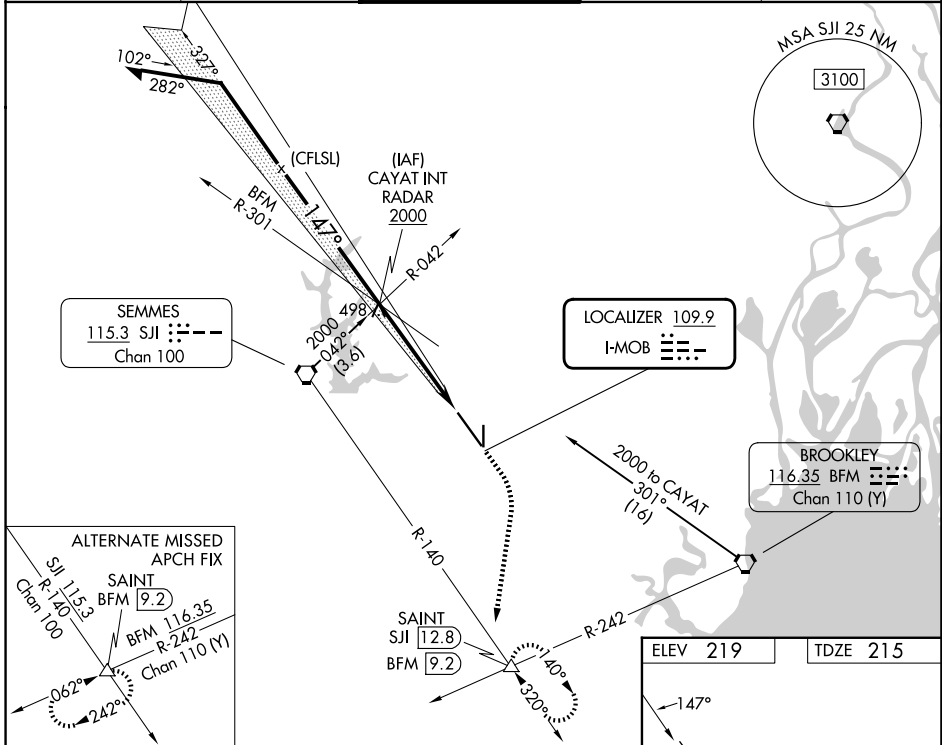
LOC I-MOB 109.9	APP CRS 147°	Rwy Ldg 8502
		TDZE 215
		Apt Elev 219

ILS or LOC RWY 15

MOBILE RGNL (MOB)

<p>▼ For inop ALS, increase S-ILS 15 Cat E visibility to RVR 4000 and S-LOC 15 Cats C/D/E visibility to 1½ mile.</p> <p>▲ *RVR 1800 authorized with use of FD or AP or HUD to DA.</p>	<p>MALSR</p>	<p>MISSED APPROACH: Climb to 900 then climbing right turn to 2000 on heading 202° then on SJI VORTAC R-140 to SAINT/SJI 12.8 DME and hold.</p>
---	---------------------	---

ATIS 124.75 257.85	MOBILE APP CON ★ 118.5 269.3	MOBILE TOWER ★ 118.3 (CTAF) 0 239.0	GND CON 121.9 348.6	UNICOM 122.95
------------------------------	--	---	-------------------------------	-------------------------



SE-4, 11 JUN 2026 to 09 JUL 2026

SE-4, 11 JUN 2026 to 09 JUL 2026