

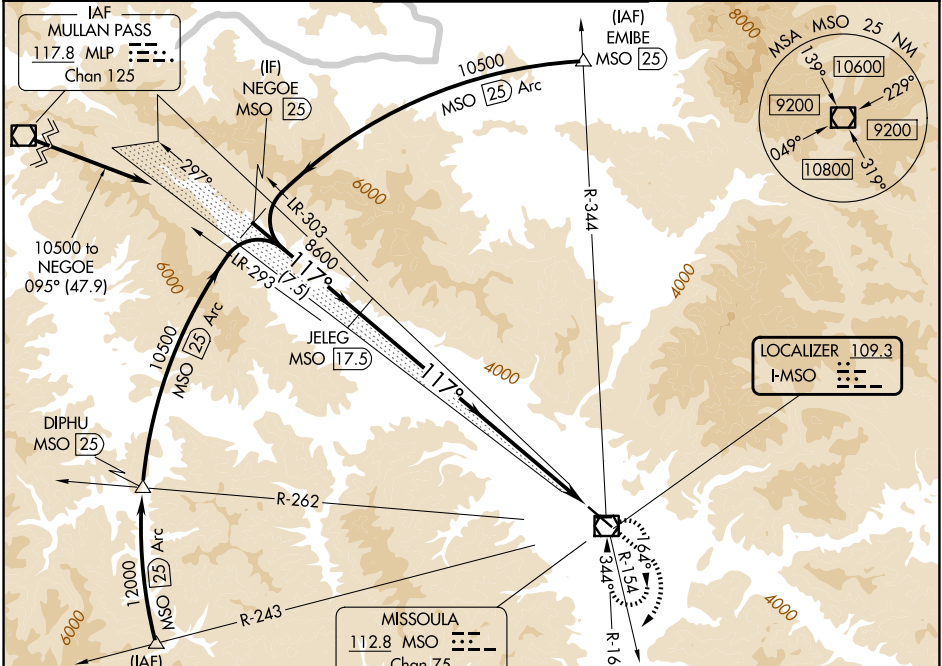
LOC I-MSO 109.3	APP CRS 117°	Rwy Ldg TDZE Apt Elev 9501 3200 3206
---------------------------	------------------------	--

ILS Y RWY 12

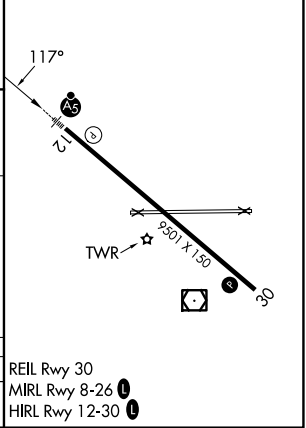
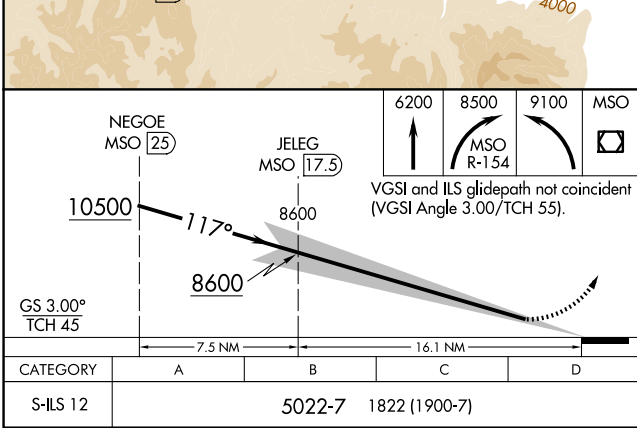
MISSOULA MONTANA (MISO)

DME required.		MALSRL	MISSED APPROACH: Climb to 6200 then climbing right turn to 8500 on MSO VOR/DME R-154 then climbing left turn to 9100 direct MSO VOR/DME and hold.
NA	Inoperative table does not apply.		
	-11°C		

ATIS 126.65	SPOKANE APP CON * 124.9 298.95	MISSOULA TOWER * 118.4 (CTAF) 377.175	GND CON 121.9	UNICOM 122.95
-----------------------	--	---	-------------------------	-------------------------



ELEV 3206		TDZE 3200
-----------	--	-----------



CATEGORY	A	B	C	D	REIL Rwy 30
S-ILS 12		5022-7	1822 (1900-7)		MIRL Rwy 8-26
					HIRL Rwy 12-30

NW-1, 11 JUN 2026 to 09 JUL 2026

NW-1, 11 JUN 2026 to 09 JUL 2026