

MIDLAND, TEXAS

# HI-VOR or TACAN RWY 16R

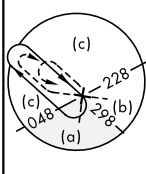
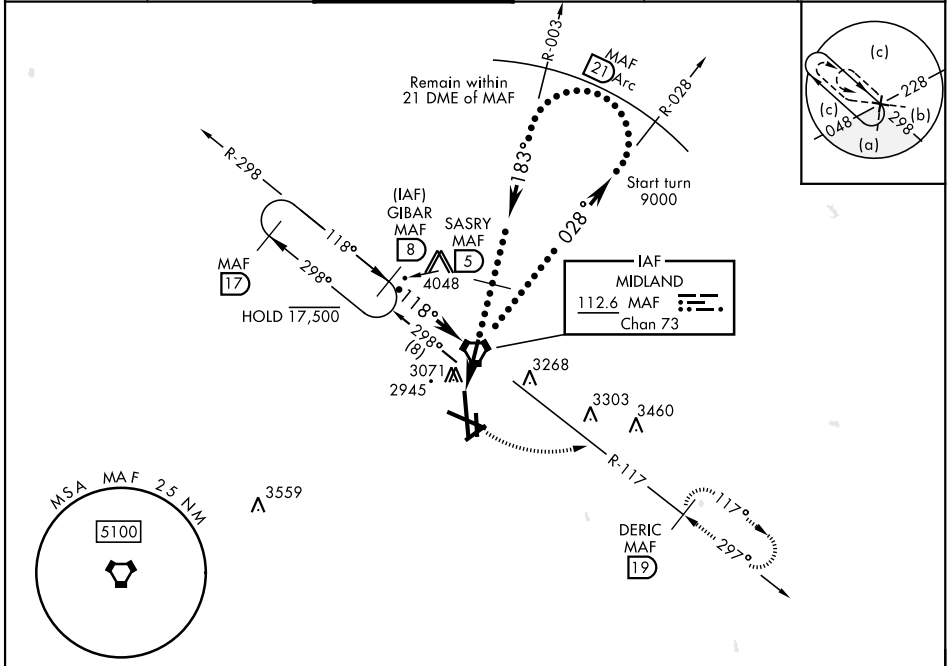
VORTAC MAF <b>112.6</b> Chan <b>73</b>	APCH CRS <b>183°</b>	Rwy ldg TDZE Arprt Elev <b>9501</b> <b>2872</b> <b>2872</b>
--	-------------------------	--

[USAF] MIDLAND INTL AIR AND SPACE PORT (KMAF)

DME required  
\* Circling Rwy 16L not authorized at night.

MISSED APPROACH: Climb to 3500 then climbing left turn to 4800 on MAF VORTAC R-117 to DERIC/MAF 19° DME and hold.

ATIS ★ <b>126.8 235.975</b>	APP CON ★ <b>124.6 290.4</b>	TOWER ★ <b>118.7 (CTAF) 273.45</b>	GND CON <b>121.9 348.6</b>	CLNC DEL <b>118.05 317.65</b>	UNICOM <b>122.95</b>
--------------------------------	---------------------------------	---------------------------------------	-------------------------------	----------------------------------	-------------------------



SC-3, 11 JUN 2026 to 09 JUL 2026

SC-3, 11 JUN 2026 to 09 JUL 2026

EMERG SAFE ALT 100 NM 7000

VGSI and descent angles not coincident GIBAR MAF 8 MAF VORTAC SASRY MAF 5 MAF 3.1 MAF 1.3 3.29° TCH 50 3.1 NM			3500 4800 MAF R-117	DERIC MAF 19 3020 183° 2902 2899 2976 3025 2974 2878 344 2878 344 2878 344	ELEV 2872 TDZE 2872
CATEGORY	C	D	E		
S-16R	3400-1½	528	(600-1½)		
CIRCUING*	3440-1½ 568 (600-1½)	3520-2 648 (700-2)	3600-2½ 728 (800-2½)	HIRL Rwy 10-28, 16R-34L MIRL Rwy 4-22, 16L-34R REIL Rwy 34L	

MIDLAND, TEXAS 31° 57' N-102° 12' W MIDLAND INTL AIR AND SPACE PORT (KMAF)

Amtd 3 20JUL17

# HI-VOR or TACAN RWY 16R