


LOC I-OPF 110.5	APP CRS 093°	Rwy Ldg TDZE Apt Elev	8002 8 8
---------------------------	------------------------	-----------------------------	-------------------------------------

ILS or LOC RWY 9L

MIAMI-OPA LOCKA EXEC (OPF)

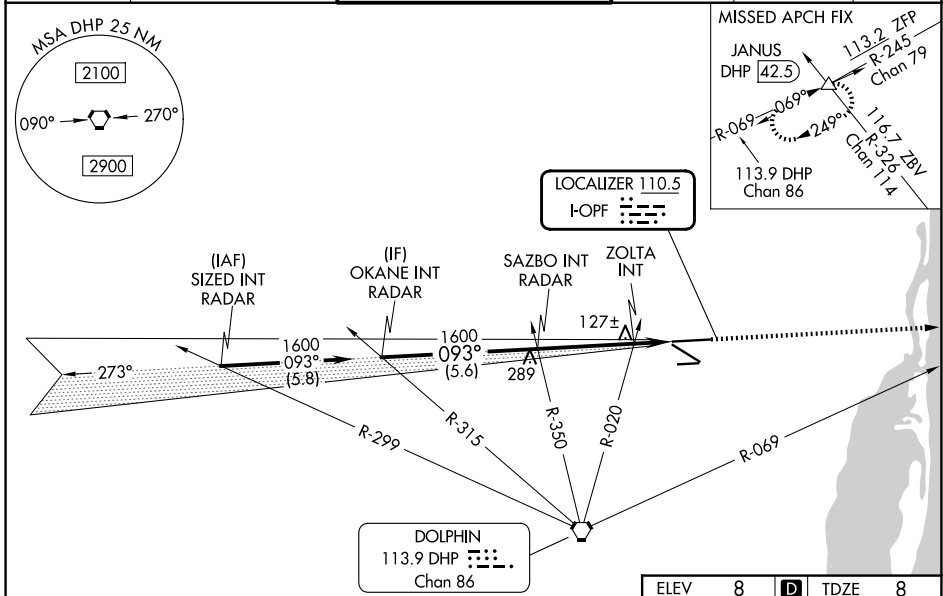
RADAR required.

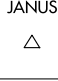
⚠ Inop table does not apply to S-ILS 9L all Cats. Rwy 9L helicopter visibility reduction below 3/4 SM NA. For inop ALS, increase S-LOC 9L Cats A and B visibility to 1 SM and Cats C and D visibility to 1 3/4 SM. ZOLTA Fix Minimums, for inop ALS, increase S-LOC 9L all Cats visibility to 1 SM. Autopilot coupled approach NA below 400 feet. Caution: Lights on highway 0.7 NM north may be mistaken for runway.

MALSR 

MISSED APPROACH: Climb to 2000 on heading 093° and DHP VORTAC R-069 to JANUS INT/DHP 42.5 DME and hold.

ATIS 125.9	MIAMI APP CON 128.6 306.975	OPA LOCKA TOWER ★ 134.675 (CTAF) 0	GND CON 120.025	CLNC DEL 119.2	GCO 119.45
----------------------	---------------------------------------	---	---------------------------	--------------------------	----------------------



	ELEV 8	D	TDZE 8		
	VGSi and ILS glidepath not coincident (VGSi Angle 3.00/TCH 55).				
	2000	DHP R-069	JANUS 		
	hdg 093°				
	OKANE INT RADAR	SAZBO INT RADAR	ZOLTA INT		
	1600	1600	480		
	GS 3.00° TCH 51	5.6 NM	3.3 NM 1.5 NM		
CATEGORY	A	B	C	D	
S-ILS 9L		258-3/4	250 (300-3/4)		
S-LOC 9L	480-3/4	472 (500-3/4)	480-1	472 (500-1)	
CIRCLING	480-1 472 (500-1)	520-1 512 (600-1)	620-1 3/4 612 (700-1 3/4)	740-2 1/4 732 (800-2 1/4)	
ZOLTA FIX MINIMUMS					
S-LOC 9L		380-3/4	372 (400-3/4)		
CIRCLING	480-1 472 (500-1)	520-1 512 (600-1)	620-1 3/4 612 (700-1 3/4)	740-2 1/4 732 (800-2 1/4)	
MIRL Rwy 9R-27L					
HIRL Rwys 9L-27R and 12-30 0					
FAF to MAP 4.8 NM					
Knots	60	90	120	150	180
Min:Sec	4:48	3:12	2:24	1:55	1:36

SE-3, 11 JUN 2026 to 09 JUL 2026

SE-3, 11 JUN 2026 to 09 JUL 2026