

LOC I-MEM 109.5	APP CRS 093°	Rwy Ldg TDZE Apt Elev	8946 259 341
---------------------------	------------------------	-----------------------------	---

ILS or LOC RWY 9

FREDERICK W SMITH INTL/MEMPHIS (MEM)

▼ For inop ALS, increase S-ILS 9 Cat E visibility to RVR 4000 and S-LOC 9 Cat E visibility to 1¾ SM.
▲

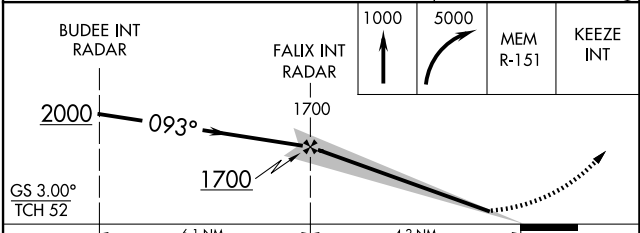
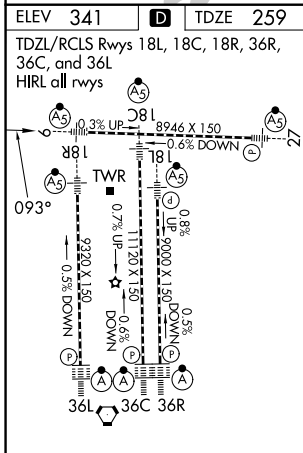
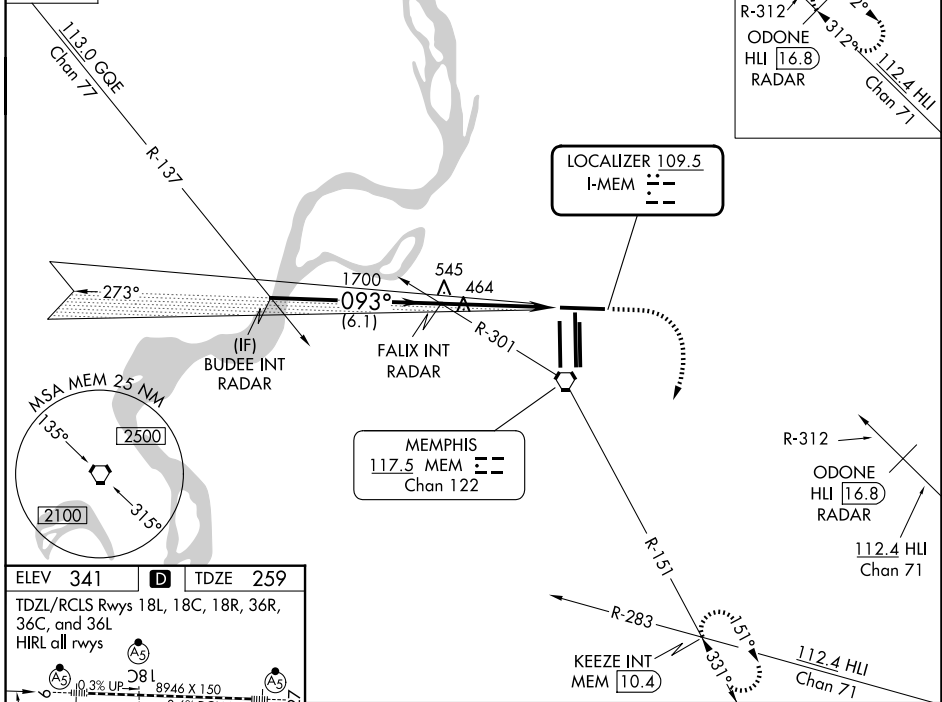
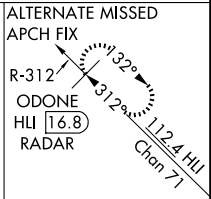


MISSED APPROACH: Climb to 1000 then climbing right turn to 5000 on MEM R-151 to KEEZE INT/MEM 10.4 DME and hold, continue climb-in-hold to 5000.

MEMPHIS APP CON	MEMPHIS TOWER	GND CON
119.1 291.6 (176°-355°)	(Rwy 9-27) 118.3 257.8	(Rwy 9-27) 121.0 379.2
125.8 338.3 (356°-175°)	(Rwys 18C-36C, 18L-36R) 119.7 257.8	(Rwys 18C-36C, 18L-36R) 121.9 379.2
	(Rwy 18R-36L) 128.425 257.8	(Rwy 18R-36L) 121.65 379.2

D-ATIS
127.75

RADAR REQUIRED



BUDEE INT RADAR	FALIX INT RADAR	1000	5000	MEM R-151	KEEZE INT
2000	1700				
GS 3.00°	TCH 52				
	6.1 NM		4.3 NM		
CATEGORY	A	B	C	D	E
S-ILS 9	466/24 207 (200-½)				
S-LOC 9	720/24 461 (400-½)	720/50 461 (400-1)	720/60 461 (400-1¼)		
CIRCLING	940-1 599 (600-1)	940-1½ 599 (600-1½)	1020-2¼ 679 (700-2¼)	1140-2¾ 799 (800-2¾)	

FAF to MAP 4.3 NM

Knots	60	90	120	150	180
Min:Sec	4:18	2:52	2:09	1:43	1:26

SE-1, 11 JUN 2026 to 09 JUL 2026

SE-1, 11 JUN 2026 to 09 JUL 2026