

LOC I-EXW <b>108.3</b>	APP CRS <b>259°</b>	Rwy Ldg TDZE Apt Elev	<b>7815</b> <b>548</b> <b>565</b>
---------------------------	------------------------	-----------------------------	---

# ILS or LOC RWY 26

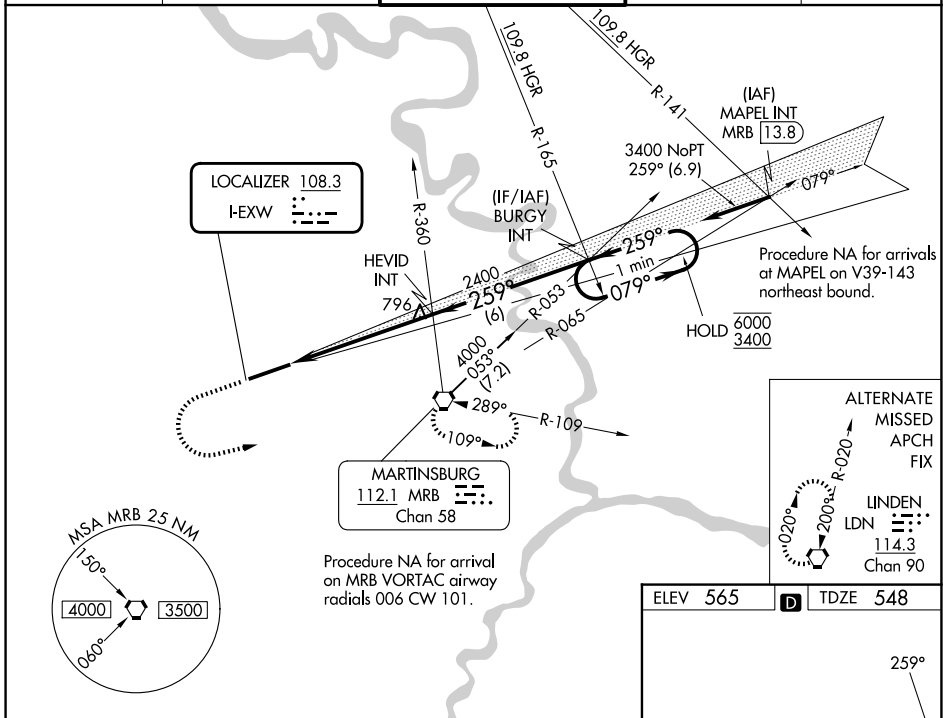
EASTERN WV RGNL/SHEPHERD FLD (MRB)

**NA** For inop ALS, increase S-ILS 26 Cat E visibility to 3/4 SM and S-LOC 26 Cat E visibility to 1 1/4 SM.

**MALSR**

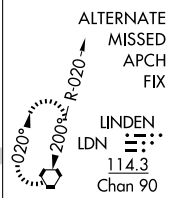
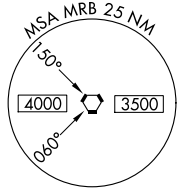
**MISSED APPROACH:** Climb to 1100 then climbing left turn to 3300 direct MRB VORTAC and hold, continue climb-in-hold to 3300.

ASOS <b>119.925</b>	POTOMAC APP CON <b>126.825 239.025</b>	MARTINSBURG TOWER ★ <b>124.3 (CTAF) 233.7</b>	GND CON <b>121.8 257.65</b>	UNICOM <b>122.95</b>
------------------------	---	--	--------------------------------	-------------------------

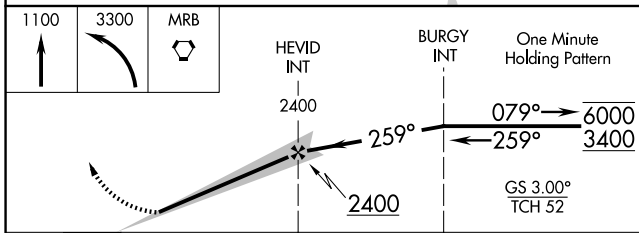


NE-4, 11 JUN 2026 to 09 JUL 2026

NE-4, 11 JUN 2026 to 09 JUL 2026



Procedure NA for arrival on MRB VORTAC airway radials 006 CW 101.



ELEV 565	<b>D</b> TDZE 548
----------	-------------------

REIL Rwy 8	<b>1</b>
HIRL Rwy 8-26	<b>1</b>
FAF to MAP 5.7 NM	
Knots	60 90 120 150 180
Min:Sed	5:42 3:48 2:51 2:17 1:54

CATEGORY	A	B	C	D	E
S-ILS 26	748-1/2 200 (200-1/2)				
S-LOC 26	980-1/2 432 (500-1/2)		980-3/4 432 (500-3/4)		
CIRCLING	1100-1 535 (600-1)	1240-1 675 (700-1)	1240-2 675 (700-2)	1320-2 1/2 755 (800-2 1/2)	2180-3 1615 (1700-3)

# ILS or LOC RWY 26