

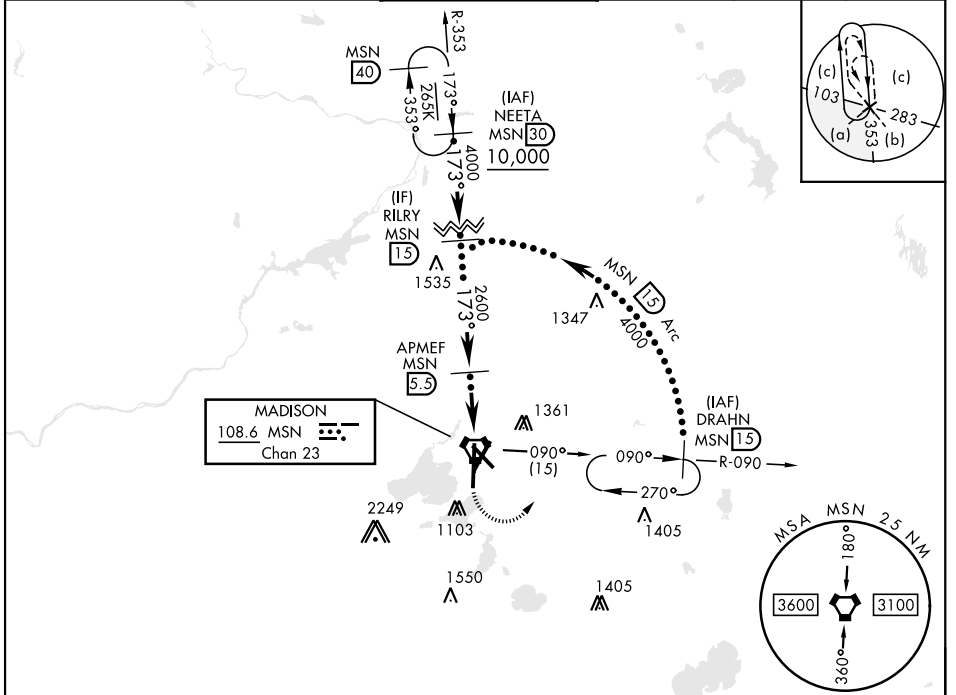
MADISON, WISCONSIN

# HI-TACAN RWY 18

VORTAC MSN <b>108.6</b> Chan <b>23</b>	APCH CRS <b>173°</b>	Rwy Idg TDZE Arpt Elev <b>8606</b> <b>864</b> <b>887</b>	[USAF]	DANE COUNTY RGNL/TRUAX FLD (KMSN)
--	-------------------------	---	--------	-----------------------------------

RADAR required	MALSR <b>A5</b>	MISSED APPROACH: Climbing left turn to 4000 on MSN VORTAC R-090 to DRAHN 15 DME and hold.
----------------	--------------------	---

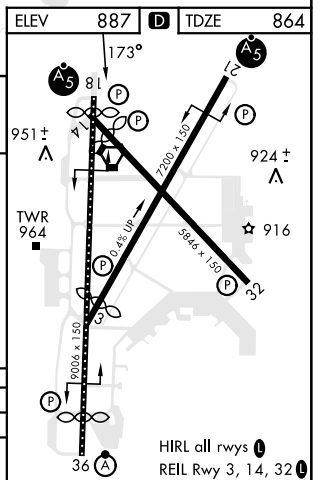
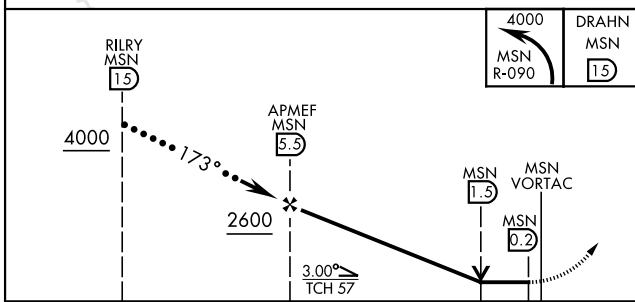
ATIS <b>124.65 278.3</b>	MADISON APP CON <b>120.1 350.3</b> (E) <b>135.45 343.7</b> (W)	MADISON TOWER ★ <b>119.3</b> (CTAF) <b>0 257.8</b>	GND CON <b>121.9 348.6</b>	CLNC DEL <b>121.625</b>	UNICOM <b>122.95</b>
-----------------------------	--	---	-------------------------------	----------------------------	-------------------------



EC-3, 11 JUN 2026 to 09 JUL 2026

EC-3, 11 JUN 2026 to 09 JUL 2026

EMERG SAFE ALT 100 NM 3600



CATEGORY	C	D	E
S-18	1360/55	496	(500-1)
CIRCLING	1460-1½ 573 (600-½)	1700-2¾ 813 (900-2¾)	1700-3 813 (900-3)

MADISON, WISCONSIN 43° 08'N-89° 20'W DANE COUNTY RGNL/TRUAX FLD (KMSN)

Amdt 1B 21MAR24

# HI-TACAN RWY 18