


LOC I-MCN <b>109.5</b>	APP CRS <b>054°</b>	Rwy Ldg TDZE Apt Elev	<b>6221</b> <b>344</b> <b>354</b>
---------------------------	------------------------	-----------------------------	---

# ILS or LOC RWY 5

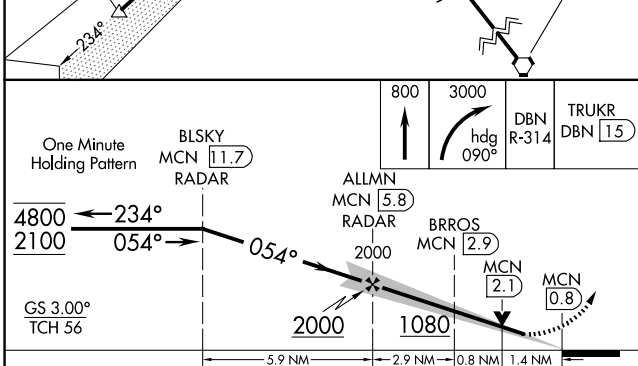
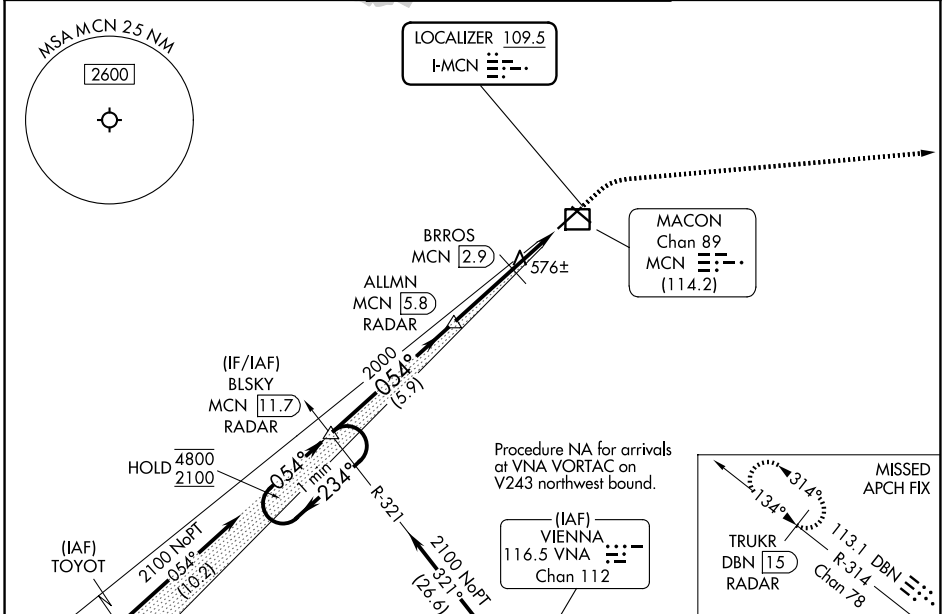
MIDDLE GEORGIA RGNL (MCN)

DME and RADAR required.

**MALS** 

**MISSED APPROACH:** Climb to 800 then climbing right turn to 3000 on heading 090° and DBN VORTAC R-314 to TRUKR/DBN VORTAC 15 DME/RADAR and hold.

ATIS <b>120.775</b>	ATLANTA APP CON * <b>124.2 279.6</b>	MACON TOWER * <b>128.2 (CTAF) 257.8</b>	GND CON <b>121.65</b>	UNICOM <b>122.95</b>
------------------------	---	--	--------------------------	-------------------------



ELEV 354	<b>D</b>	TDZE 344
----------	----------	----------

TWR

14


23


5000' x 150'


6500' x 150'

0.4% UP

054°

HIRL Rwy 5-23 

MIRL Rwy 14-32 

REIL Rws 23 and 32 

CATEGORY	A	B	C	D	E
S-ILS 5 *	544/24 200 (200-½)				
S-LOC 5	840/24	496 (500-½)	840/50		496 (500-1)
CIRCLING	900-1	546 (600-1)	920-1½ 566 (600-1½)	1120-2½ 766 (800-2½)	1180-3 826 (900-3)

SE-4, 11 JUN 2026 to 09 JUL 2026

SE-4, 11 JUN 2026 to 09 JUL 2026