

LUBBOCK, TEXAS

# HI-ILS or LOC RWY 17R

LOC/DME I-LBB <b>111.7</b> Chan <b>54</b>	APCH CRS <b>174°</b>	Rwy Ildg <b>11,498</b> TDZE <b>3282</b> Arprt Elev <b>3282</b>
---	-------------------------	--

[USAF]

LUBBOCK PRESTON SMITH INTL (KLBB)

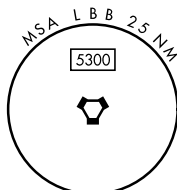
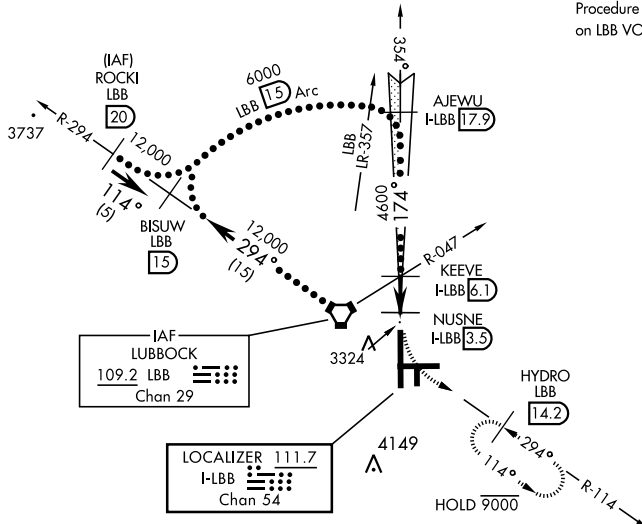
DME or RADAR required.



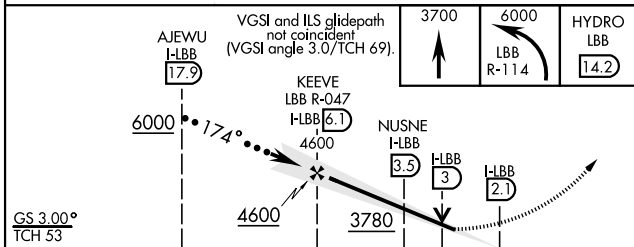
MISSED APPROACH: Climb to 3700, then climbing left turn to 6000 via LBB VORTAC R-114 to HYDRO (LBB 14.2 DME) and hold, continue climb in hold to 6000.

ATIS <b>125.3 270.275</b>	APP CON <b>119.2 351.8</b>	TOWER <b>120.5 239.3</b>	GND CON <b>121.9 348.6</b>	CLNC DEL <b>125.8 281.55</b>
------------------------------	-------------------------------	-----------------------------	-------------------------------	---------------------------------

Procedure not authorized for arrivals on LBB VORTAC airways R-251 CW R-305.

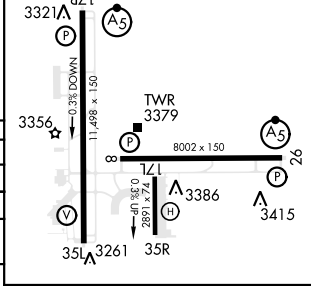


EMERG SAFE ALT 100 NM 7300



ELEV	3282	TDZE	3282
------	------	------	------

HIRL Rwy 8-26, 17R-35L  
REIL Rwy 8



CATEGORY	C	D	E
S-ILS 17R *	3482/24	200 (200-½)	
S-LOC 17R **	3780/50	498 (500-1)	
CIRCLING	3880-1½ 598 (600-1½)	3940-2 658 (700-2)	4100-3 818 (900-3)
	NUSNE DME FIX MINIMUMS		
S-LOC 17R ***	3620/26	338 (400-¾)	
CIRCLING	3880-1½ 598 (600-1½)	3940-2 658 (700-2)	4100-3 818 (900-3)

FAF to MAP 4 NM					
Knots	120	140	160	180	200
Min:Sec	2:00	1:43	1:30	1:20	1:12

LUBBOCK, TEXAS

33° 40' N - 101° 49' W

LUBBOCK PRESTON SMITH INTL (KLBB)

Amdt 2 02FEB17

# HI-ILS or LOC RWY 17R

SC-2, 11 JUN 2026 to 09 JUL 2026

SC-2, 11 JUN 2026 to 09 JUL 2026