

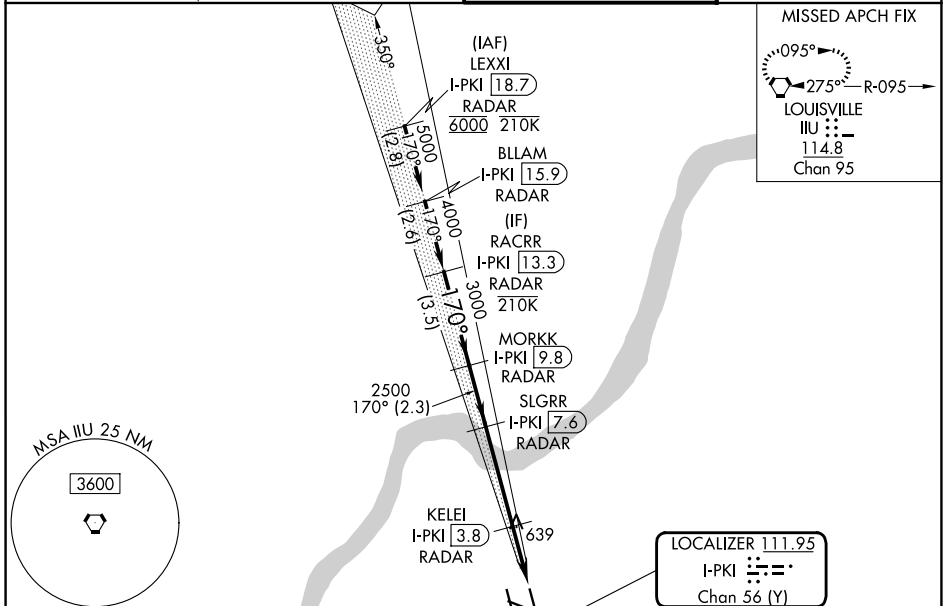
LOC/DME I-PKI <b>111.95</b>	APP CRS <b>170°</b>	Rwy Ldg <b>7800</b>
Chan <b>56 (Y)</b>	TDZE <b>499</b>	Apt Elev <b>501</b>

# ILS or LOC RWY 17L

LOUISVILLE MUHAMMAD ALI INTL (SDF)

DME or RADAR required. RADAR required for procedure entry.		MALSR 	MISSED APPROACH: Climb to 1000 then climbing left turn to 3000 direct IIU VORTAC, continue climb-in-hold to 3000.
Simultaneous approach authorized. Circling Rwy 11 NA at night. For inop ALS, increase S-LOC 17L Cat C/D visibility to 1 3/8 SM.			

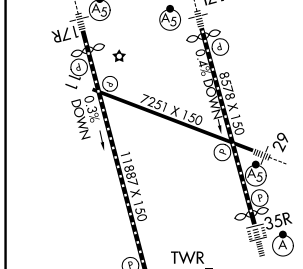
D-ATIS <b>118.725</b>	LOUISVILLE APP CON <b>132.075 327.0</b>	LOUISVILLE TOWER <b>124.2 257.8</b>	GND CON <b>121.7 348.6</b>
--------------------------	--	--	-------------------------------



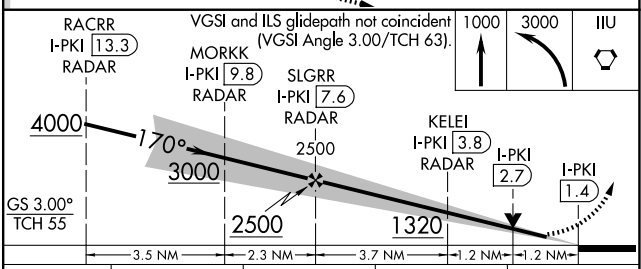
SE-1, 11 JUN 2026 to 09 JUL 2026

SE-1, 11 JUN 2026 to 09 JUL 2026

ELEV <b>501</b>	<b>D</b>	TDZE <b>499</b>
-----------------	----------	-----------------



FAF to MAP <b>6.1 NM</b>					
Knots	60	90	120	150	180
Min:Sec	6:06	4:04	3:03	2:26	2:02



CATEGORY	A	B	C	D
S-ILS 17L	699/18 200 (200-1/2)			
S-LOC 17L	1000/24	501 (500-1/2)	1000/55	501 (500-1)
CIRCLING	1040-1 539 (600-1)	1140-1 639 (700-1)	1160-1 3/4 659 (700-1 3/4)	1400-3 899 (900-3)