

LOC/DME I-LNR 108.35 Chan 20(Y)	APP CRS 270°	Rwy Ldg 5000 TDZE 717 Apt Elev 717
----------------------------------------------	------------------------	---------------------------------------------------------------

LOC RWY 27

TRI-COUNTY RGNL (LNR)

DME required. RADAR required for procedure entry.

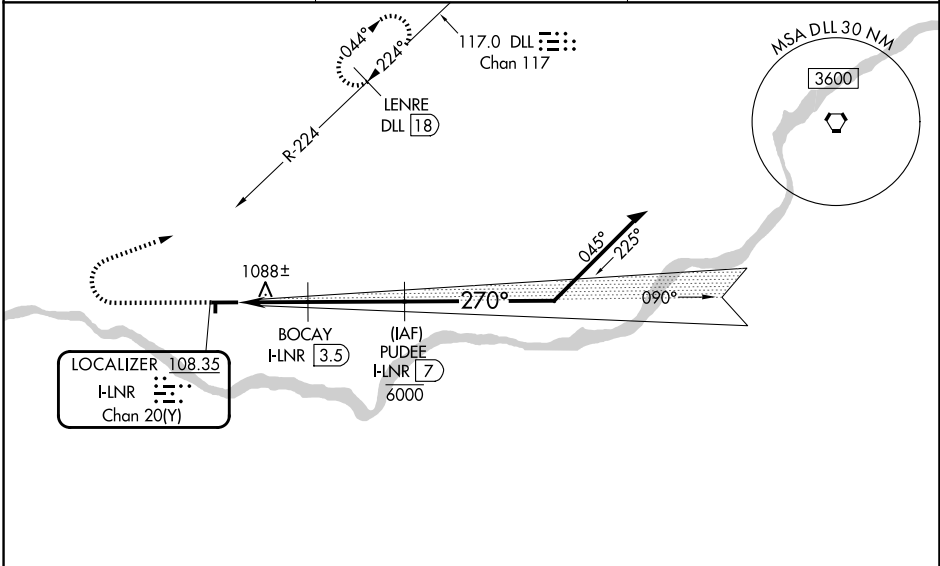
▼
▲ NA
☼ -31°C
Rwy 27 helicopter visibility reduction below 3/4 SM NA.
Circling Rwy 18, 36 NA at night.

MISSED APPROACH: Climb to 2200 then climbing right turn to 3300 on heading 070° and on DLL R-224 to LENRE/DLL VORTAC 18 DME and hold.

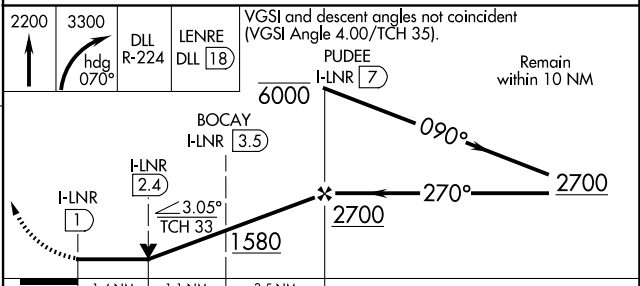
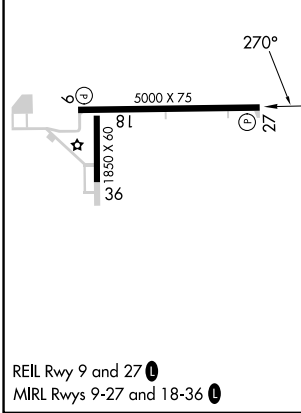
ASOS
119.425

MADISON APP CON ★
135.45 343.7

UNICOM
123.0 (CTAF) 0



ELEV 717	TDZE 717
----------	----------



CATEGORY	A	B	C	D
S-LOC 27	1360-1	643 (700-1)	1360-1 7/8 643 (700-1 7/8)	NA
CIRCLING	1520-1	803 (900-1)	1560-2 1/2 843 (900-2 1/2)	NA

EC-3, 11 JUN 2026 to 09 JUL 2026

EC-3, 11 JUN 2026 to 09 JUL 2026