

HI-ILS Z or LOC Z RWY 18

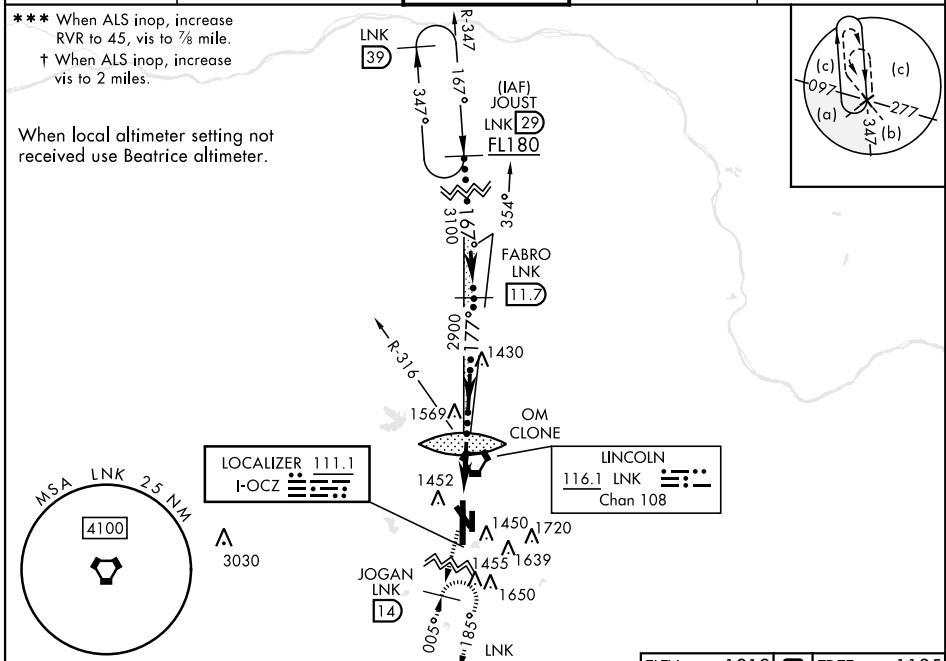
LOC I-OCZ 111.1	APCH CRS 177°	Rwy Idg 12,901 TDZE 1195 Arpt Elev 1219	[USAF]	LINCOLN (KLNK)
---------------------------	-------------------------	--------------------------------------------------------------------	--------	----------------

DME, RADAR required for procedure entry.

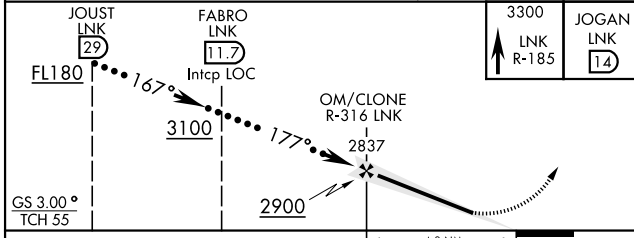
MALS **A5**

MISSED APPROACH: Climb to 3300 on LNK VORTAC R-185 to JOGAN (LNK 14 DME) and hold.

ATIS 118.05 290.9	OMAHA APP CON 124.0 270.3	TOWER ★ 118.5 253.5	GND CON 121.9 275.8	CLNC DEL 120.7 225.4
-----------------------------	-------------------------------------	-------------------------------	-------------------------------	--------------------------------



EMERG SAFE ALT 100 NM 4800



ELEV	1219	TDZE	1195
------	------	------	------

FAF to MAP 4.9 NM	Knots	120	140	160	180	200
	Min:Sec	2:27	2:06	1:50	1:38	1:28

MIRL Rwy 14-32 and 17-35
HIRL Rwy 18-36
REIL Rwy 14, 17

CATEGORY	C	D	E
S-ILS 18*	1395/24	200	(200-1/2)
S-LOC 18**	1820-1 3/8	625	(700-1 1/8)
CIRCLING	1820-1 3/4 601 (700-1 3/4)	1820-2 601 (700-2)	2040-3 821 (900-3)
BEATRICE ALTIMETER SETTING			
S-ILS 18***	1486/24	291	(200-1/2)
S-LOC 18 †	1920-1 5/8	725	(800-1 5/8)
CIRCLING	1920-2 701 (800-2)	1920-2 1/4 701 (800-2 1/4)	2140-3 1/4 921 (1000-3 1/4)

HI-ILS Z or LOC Z RWY 18

NC-2, 11 JUN 2026 to 09 JUL 2026

NC-2, 11 JUN 2026 to 09 JUL 2026