

| | | |
|--|------------------------|--|
| LOC/DME I-GQR 111.75 Chan 54(Y) | APP CRS 035° | Rwy Ldg 4270 TDZE 744 Apt Elev 757 |
|--|------------------------|--|

ILS or LOC RWY 4

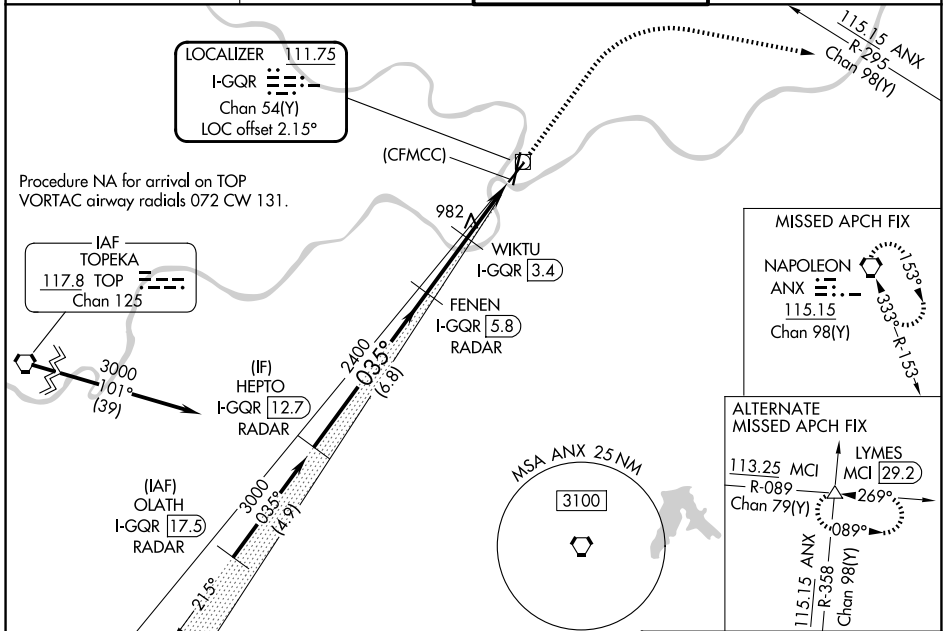
KANSAS CITY DOWNTOWN/WHEELER FLD (MKC)

DME or RADAR required for procedure entry. DME or RADAR required for LOC only.

⚠ Circling NA east of Rwy 1-19. Autopilot coupled approach NA below 1013.
⚠ Circling NA to Rwy 22. Circling NA for Cat D to Rwy 4. Rwy 4 helicopter visibility reduction below RVR 4000 NA.

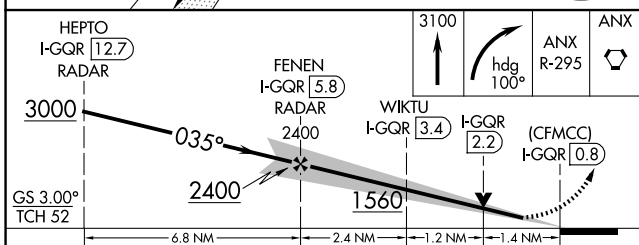
MISSED APPROACH: Climb to 3100 then right turn heading 100° and on ANX VORTAC R-295 to ANX VORTAC and hold.

| | | | |
|-----------------------|--|--------------------------------------|-------------------------|
| ATIS 120.75 | KANSAS CITY APP CON 118.4 307.35 | DOWNTOWN TOWER 133.3 233.7 | GND CON 121.9 |
|-----------------------|--|--------------------------------------|-------------------------|



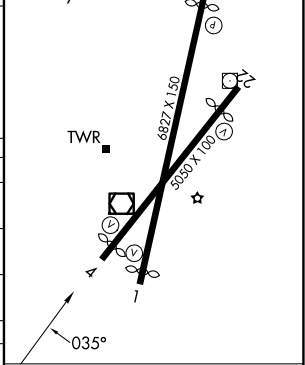
NC-3, 11 JUN 2026 to 09 JUL 2026

NC-3, 11 JUN 2026 to 09 JUL 2026



| | |
|----------|-------------------|
| ELEV 757 | D TDZE 744 |
|----------|-------------------|

HIRL Rws 4-22 and 1-19
 REL Rws 1 and 22
 RLLS Rwy 1



| CATEGORY | A | B | C | D |
|--------------------|------------------------|-------------------------|-------------------------|-------------------------|
| S-ILS 4 | 1001/40 257 (300-¾) | | | NA |
| S-LOC 4 | 1560/55 816 (900-1) | 1560-1¼ 816 (900-1¼) | 1560-2½ 816 (900-2½) | NA |
| CIRCLING | 1560-1 803 (900-1) | 1560-1¼ 803 (900-1¼) | 1560-2½ | 803 (900-2½) |
| WIKTU FIX MINIMUMS | | | | |
| S-LOC 4 | 1240/55 | 496 (500-1) | 1240-1⅜ 496 (500-1⅜) | NA |
| CIRCLING | 1380-1 623 (700-1) | 1400-1 643 (700-1) | 1460-2 703 (800-2) | 1540-2½ 783 (800-2½) |

| | | | | | |
|-----------------|------|------|------|------|------|
| FAF to MAP 5 NM | | | | | |
| Knots | 60 | 90 | 120 | 150 | 180 |
| Min:Sec | 5:00 | 3:20 | 2:30 | 2:00 | 1:40 |

ILS or LOC RWY 4