

LOC I-JHF <b>111.7</b>	APP CRS <b>159°</b>	Rwy Ldg TDZE Apt Elev	<b>5387</b> <b>341</b> <b>341</b>
---------------------------	------------------------	-----------------------------	---

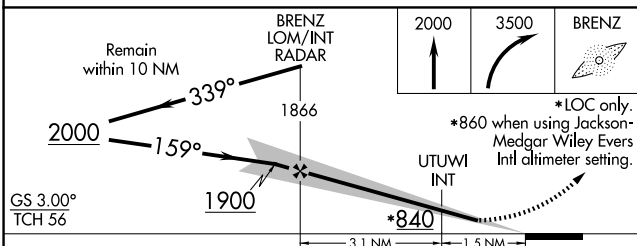
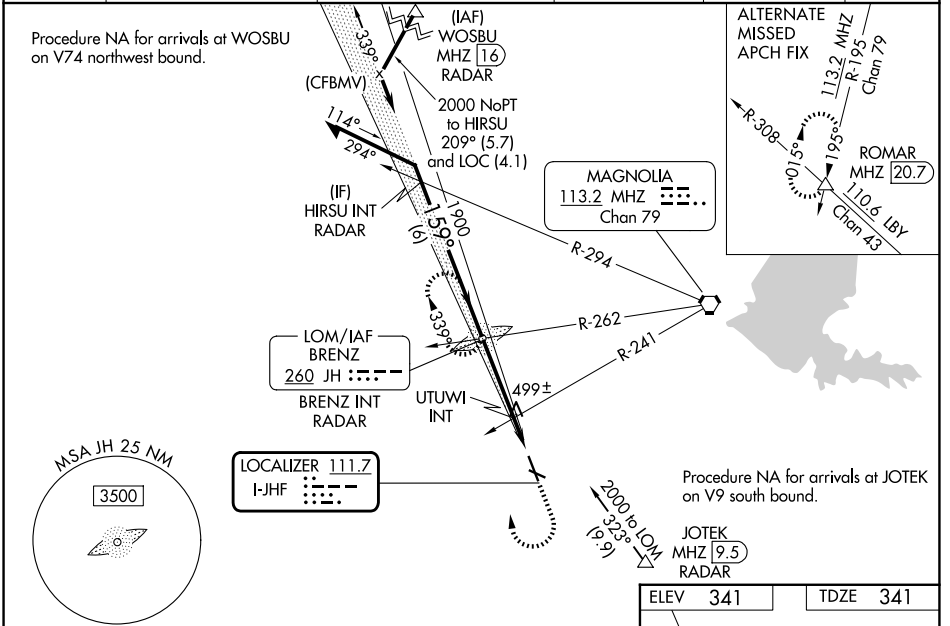
# ILS or LOC RWY 16

HAWKINS FLD (HKS)

**⚠** When local altimeter setting not received, use Jackson-Medgar Wiley Evers Intl altimeter setting, increase all DA 19 feet and all MDA 20 feet, increase Circling Cat C visibility ¼ mile and UTUWI fix Circling Cat C visibility ¼ mile. For inop MALS, increase S-LOC 16 Cats C/D visibility ¾, increase UTUWI fix S-LOC 16 Cats C/D visibility ¾. For inop MALS when using Jackson-Medgar Wiley Evers Intl altimeter setting increase S-LOC Cats C/D visibility ¾. Glideslope unusable when control tower closed, only localizer minimums authorized during this period. ADF required.

**MALS**  
 MISSED APPROACH: Climb to 2000 then climbing right turn to 3500 direct BRENZ LOM and hold.

ASOS <b>120.625</b>	JACKSON APP CON * <b>123.9 319.2</b>	HAWKINS TOWER * <b>119.65 (CTAF) 0 257.8</b>	GND CON <b>121.9 239.0</b>	CLNC DEL <b>121.9</b> (When twr closed)	UNICOM <b>122.95</b>
------------------------	---	---	-------------------------------	---	-------------------------



ELEV	341	TDZE	341
REIL Rwy 34	1	HIRL Rwy 16-34	1
MIRL Rwy 11-29			
FAF to MAP 4.6 NM			
Knots	60	90	120 150 180
Min:Sec	4:36	3:04	2:18 1:50 1:32

CATEGORY	A	B	C	D
S-ILS 16		541-½	200 (200-½)	
S-LOC 16	840-½	499 (500-½)	840-1	499 (500-1)
CIRCLING	860-1	880-1	1140-2¼	1320-3
	519 (600-1)	539 (600-1)	799 (800-2¼)	979 (1000-3)
UTUWI FIX MINIMUMS (DUAL VOR RECEIVERS REQUIRED)				
S-LOC 16	760-½	419 (500-½)	760-¾	419 (500-¾)
CIRCLING	860-1	880-1	1140-2¼	1320-3
	519 (600-1)	539 (600-1)	799 (800-2¼)	979 (1000-3)

SC-4, 11 JUN 2026 to 09 JUL 2026

SC-4, 11 JUN 2026 to 09 JUL 2026