

LOC/DME I-HON 110.3 Chan 40	APP CRS 121°	Rwy Ldg 7201 TDZE 1289 Apt Elev 1289
---	------------------------	---

ILS or LOC RWY 12

HURON RGNL (HON)

RNAV 1-GPS or RADAR required for procedure entry. ADF required.
From HUMSO and WEDEM: RNAV-1 GPS required.

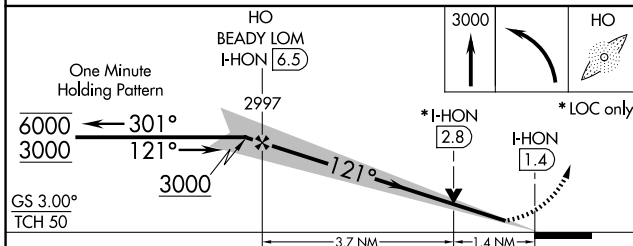
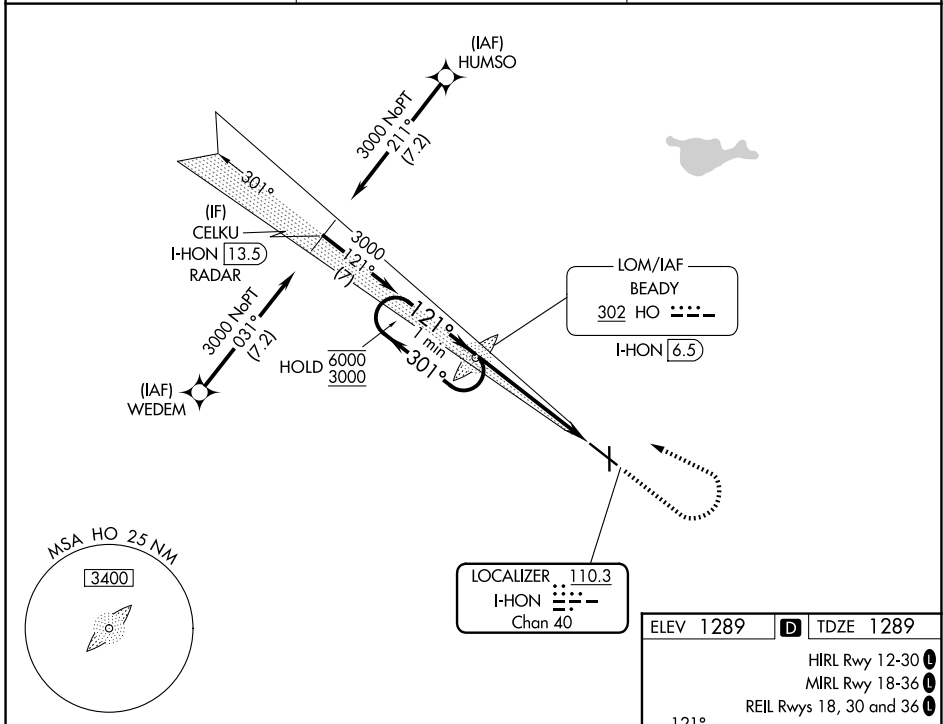
MALSR

MISSED APPROACH: Climb to 3000 then left turn direct BEADY LOM and hold.

▼ Circling Rwy 18, 36 NA at night. For inop ALS, increase S-LOC 12
▲ Cat C/D to 1 $\frac{3}{8}$ SM.



ASOS 118.125	MINNEAPOLIS CENTER 126.25 339.8	UNICOM 123.0 (CTAF)
------------------------	---	-------------------------------



ELEV 1289	D TDZE 1289
HIRL Rwy 12-30 !	
MIRL Rwy 18-36 !	
REIL Rws 18, 30 and 36 !	
FAF to MAP 5.1 NM	
Knots	60 90 120 150 180
Min:Sec	5:06 3:24 2:33 2:02 1:42

CATEGORY	A	B	C	D
S-ILS 12	1489- $\frac{1}{2}$ 200 (200- $\frac{1}{2}$)			
S-LOC 12	1780- $\frac{1}{2}$ 491 (500- $\frac{1}{2}$)	1780-1 491 (500-1)		
CIRCLING	1820-1 531 (600-1)	1920-1 $\frac{3}{4}$ 631 (700-1 $\frac{3}{4}$)	1980-2 $\frac{1}{4}$ 691 (700-2 $\frac{1}{4}$)	

NC-1, 11 JUN 2026 to 09 JUL 2026

NC-1, 11 JUN 2026 to 09 JUL 2026