

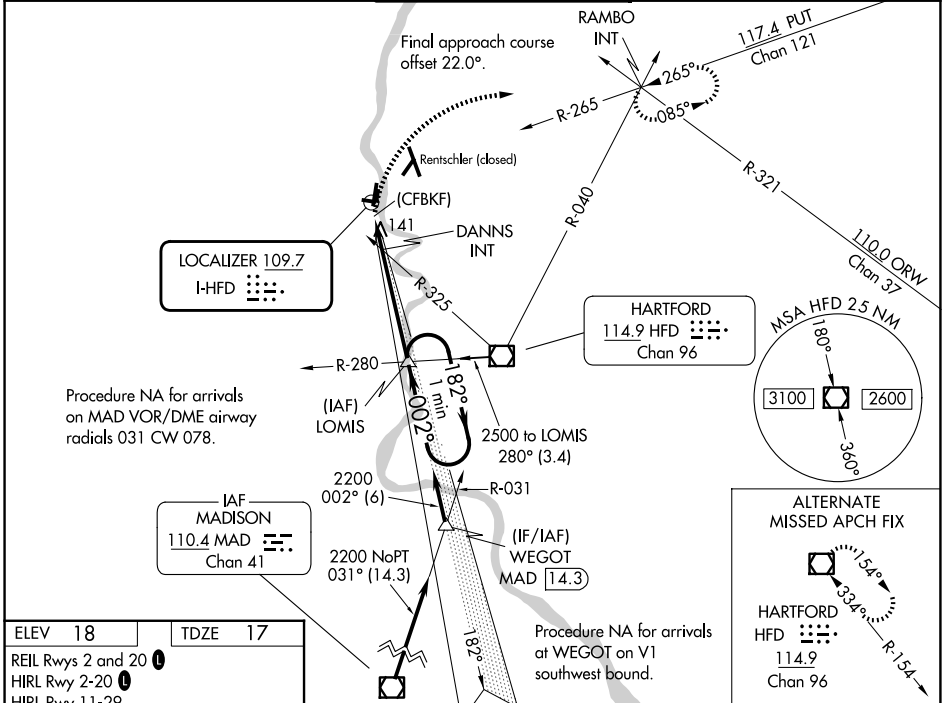
LOC I-HFD <b>109.7</b>	APP CRS <b>002°</b>	Rwy Ldg TDZE Apt Elev	<b>4006</b> <b>17</b> <b>18</b>
---------------------------	------------------------	-----------------------------	---------------------------------------

**LDA RWY 2**  
HARTFORD-BRAINARD (HFD)

▼ Helicopter visibility reduction below 1 SM NA. Night landing: Rwy 11, 20, 29 NA. Night landing: Rwy 2 operational VGSI required, remain on or above VGSI glidepath until threshold.  
▲ MISSED APPROACH: Climbing right turn to 2500 on heading 090° and PUT VOR/DME R-265 to RAMBO INT and hold.

MISSED APPROACH: Climbing right turn to 2500 on heading 090° and PUT VOR/DME R-265 to RAMBO INT and hold.

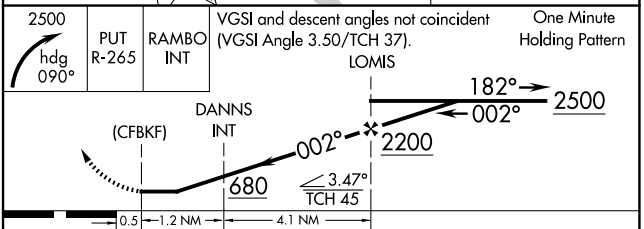
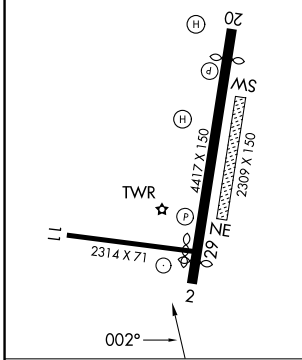
ATIS <b>126.45</b>	BRADLEY APP CON <b>127.8 269.325</b>	<b>BRAINARD TOWER ★</b> <b>119.6 (CTAF) 0 248.2</b>	GND CON <b>121.6</b>	UNICOM <b>122.95</b>
-----------------------	---	--	-------------------------	-------------------------



NE-1, 11 JUN 2026 to 09 JUL 2026

NE-1, 11 JUN 2026 to 09 JUL 2026

ELEV <b>18</b>	TDZE <b>17</b>
REIL Rws 2 and 20	
HIRL Rwy 2-20	
HIRL Rwy 11-29	



CATEGORY	A	B	C	D
S-2	680-1	663 (700-1)	680-1 7/8	663 (700-1 7/8)
CIRCLING	680-1 662 (700-1)	900-1 1/4 882 (900-1 1/4)	920-2 3/4 902 (1000-2 3/4)	920-3 902 (1000-3)
DANNS FIX MINIMUMS (DUAL VOR RECEIVERS REQUIRED)				
S-2	460-1	443 (500-1)	460-1 3/8	443 (500-1 3/8)
CIRCLING	580-1 562 (600-1)	900-1 1/4 882 (900-1 1/4)	920-2 3/4 902 (1000-2 3/4)	920-3 902 (1000-3)

FAF to MAP 5.3 NM					
Knots	60	90	120	150	180
Min:Sec	5:18	3:32	2:39	2:07	1:46