

LOC I-MDT 110.9	APP CRS 128°	Rwy Ldg 8070
		TDZE 308
		Apt Elev 310

ILS or LOC RWY 13

HARRISBURG INTL (MDT)

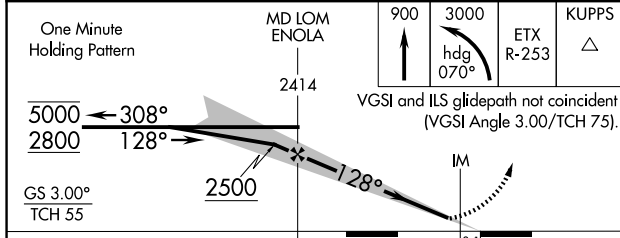
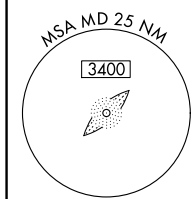
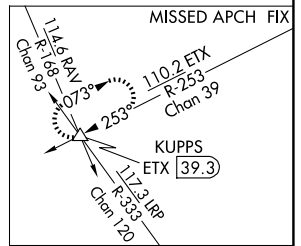
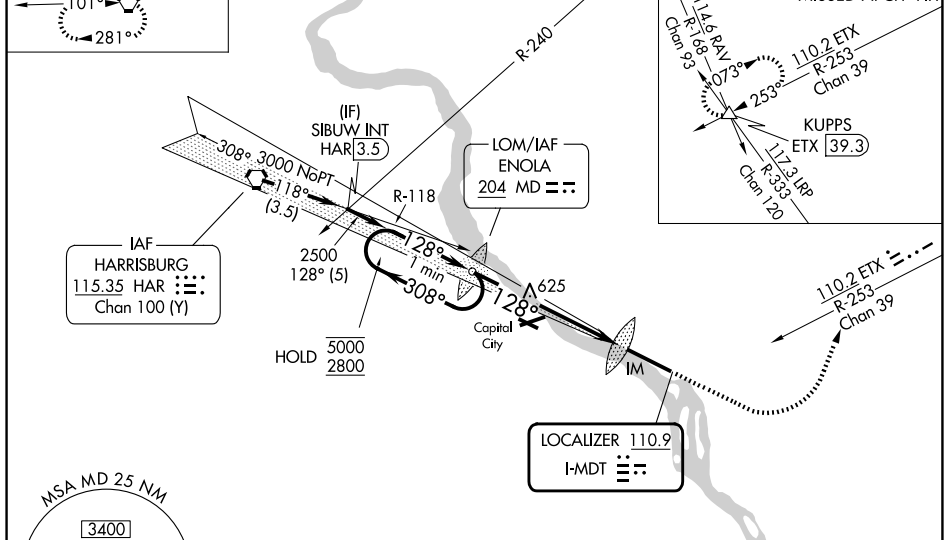
<p>Circling NA south of Rwy 13-31. -16°C</p>	<p>ALSF-2</p>	<p>MISSED APPROACH: Climb to 900 then climbing left turn to 3000 on heading 070° and on ETX VOR/DME R-253 to KUPPS INT/ETX 39.3 DME and hold.</p>
--	---------------	---

<p>ATIS 118.8</p>	<p>HARRISBURG APP CON</p> <table border="1"> <tr> <td>(080°-179°)</td> <td>126.45</td> <td>281.525</td> </tr> <tr> <td>(180°-329°)</td> <td>124.1</td> <td>273.525</td> </tr> <tr> <td>(330°-079°)</td> <td>118.25</td> <td>269.45</td> </tr> </table>	(080°-179°)	126.45	281.525	(180°-329°)	124.1	273.525	(330°-079°)	118.25	269.45	<p>HARRISBURG INTL TOWER 124.8 269.35</p>	<p>GND CON 121.7 348.6</p>
(080°-179°)	126.45	281.525										
(180°-329°)	124.1	273.525										
(330°-079°)	118.25	269.45										

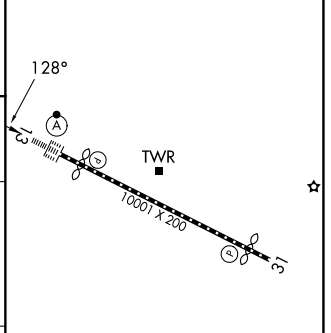
ALTERNATE MISSED APCH FIX

HARRISBURG HAR 115.35 Chan 100 (Y)

Procedure NA for arrival on HAR VORTAC airway radials 102 CW 157 and at HAR VORTAC on V12 eastbound.



ELEV 310	D	TDZE 308
----------	---	----------



CATEGORY	A	B	C	D
S-ILS 13	508/18		200 (200-½)	
S-LOC 13	900/24	592 (600-½)	900-1¼	592 (600-1¼)
CIRCLING	900-1 590 (600-1)	980-1 670 (700-1)	1000-2 690 (700-2)	1420-3 1110 (1200-3)

TDZ/CL Rwy 13				
REIL Rwy 31				
HIRL Rwy 13-31				
FAF to MAP 6.4 NM				
Knots	60	90	120	150 180
Min:Sec	6:24	4:16	3:12	2:34 2:08

NE-4, 11 JUN 2026 to 09 JUL 2026

NE-4, 11 JUN 2026 to 09 JUL 2026