

WAAS CH 62830 W14A	APP CRS 137°	Rwy Ldg TDZE Apt Elev	6236 2608 2613
--	------------------------	-----------------------------	---

RNAV (GPS) RWY 14

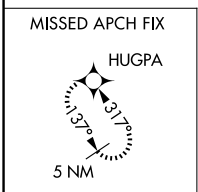
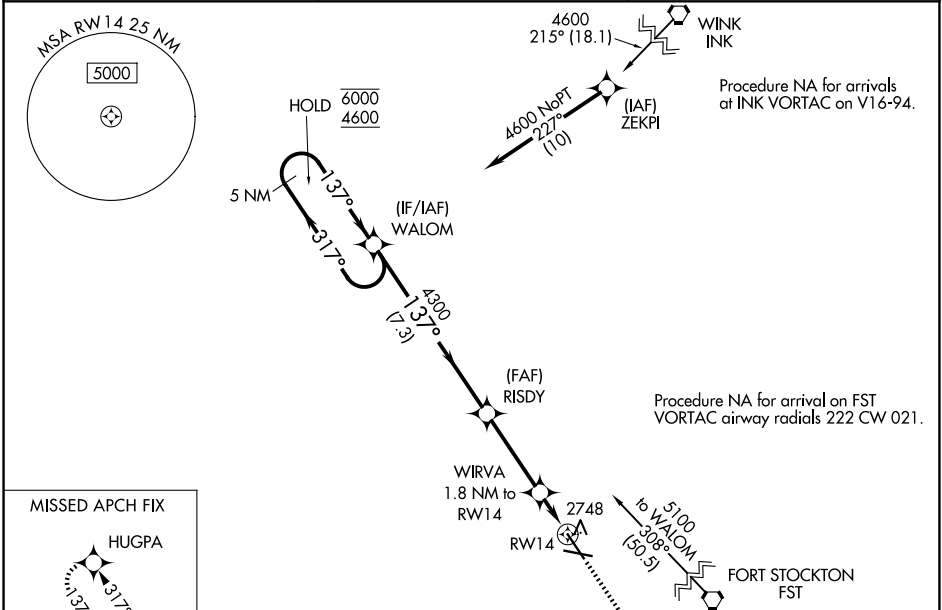
PECOS MUNI (PEQ)

RNP APCH - GPS.

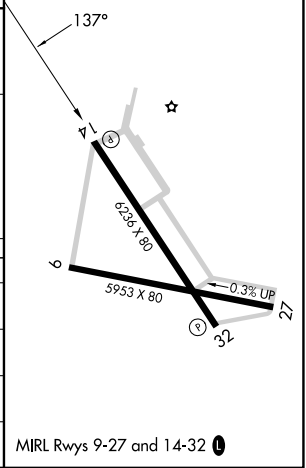
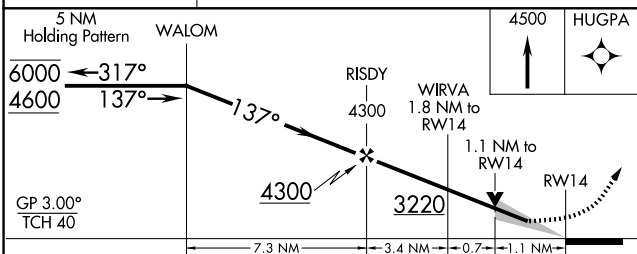
⚠ Circling Rwy 9, 27 NA at night. Baro-VNAV and VDP NA when using Wink altimeter setting. For uncompensated Baro-VNAV systems, LNAV/VNAV NA below -20°C or above 54°C. When local altimeter setting not received, use Wink altimeter setting and increase LPV DA to 2903 feet and all visibilities 1/8 SM. Increase LNAV/VNAV DA to 3004 feet and all visibilities 1/4 SM. Increase all MDAs 100 feet and LNAV visibility Cat C/D 1/4 SM, and Circling visibility Cat C/D 1/4 SM.

MISSED APPROACH:
Climb to 4500 direct HUGPA and hold.

AWOS-3 118.175	ALBUQUERQUE CENTER 135.875 292.15	UNICOM 122.8 (CTAF) 0
--------------------------	---	---------------------------------



ELEV 2613	TDZE 2608
-----------	-----------



CATEGORY	A	B	C	D
LPV DA		2808-3/4	200 (200-3/4)	
LNAV/VNAV DA		2909-7/8	301 (300-7/8)	
LNAV MDA	3000-1	392 (400-1)	3000-1 1/8	392 (400-1 1/8)
CIRCLING	3060-1 447 (500-1)	3140-1 527 (600-1)	3360-2 1/4 747 (800-2 1/4)	3360-2 1/2 747 (800-2 1/2)

MIRL Rwy 9-27 and 14-32 0

SC-3, 11 JUN 2026 to 09 JUL 2026

SC-3, 11 JUN 2026 to 09 JUL 2026