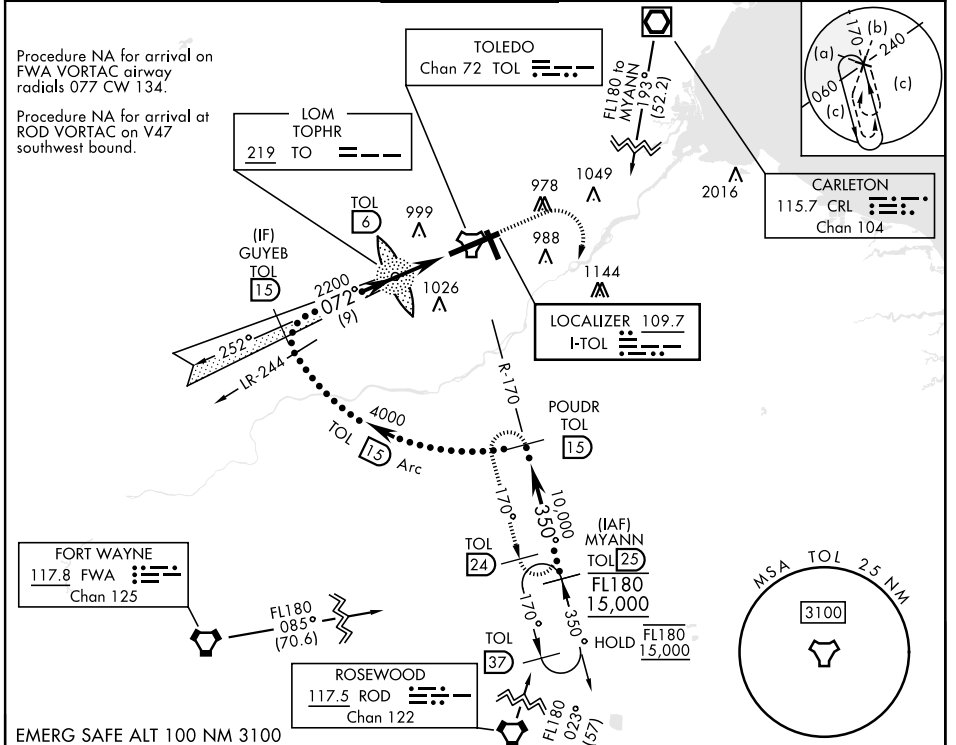


# HI-ILS Y or LOC Y RWY 7

LOC I-TOL <b>109.7</b>	APCH CRS <b>072°</b>	Rwy Idg <b>10,599</b> TDZE <b>683</b> Arpt Elev <b>684</b>	[USAF]	EUGENE F KRANZ TOLEDO EXPRESS (KTOL)
---------------------------	-------------------------	--	--------	--------------------------------------

DME required	ALSF-2	MISSED APPROACH: Climb to 2500, then climbing right turn to 3000 on TOL TACAN R-170 to POUDR/15 DME and hold.
<p>*When ALS inop, increase CAT E RVR to 40, vis to 3/4 mile.</p> <p>**When ALS inop, increase CAT E RVR to 60, vis to 1 1/4 miles.</p>		

ATIS <b>118.75 290.225</b>	TOLEDO APP CON <b>126.1 317.55</b>	TOLEDO TOWER <b>118.1 285.4</b>	GND CON <b>121.9 348.6</b>	CLNC DEL <b>121.75 348.6</b>	ASR
-------------------------------	---------------------------------------	------------------------------------	-------------------------------	---------------------------------	-----



	2500	3000	POUDR TOL 15	ELEV 684	TDZE 683
GS 3.00° TCH 59	GUYEB TOL 15	LOM TOL 6	TOL 27	TOL 16	
	4000	2162			
			4.4 NM		
CATEGORY	C	D	E		
S-ILS 7 *	886/18	203 (300-1/2)			
S-LOC 7 **	1140/45	457 (500-7/8)			
CIRCLING	1300-1 3/4 616 (700-1 3/4)	1400-2 1/4 716 (800-2 1/4)	1400-2 1/2 716 (800-2 1/2)		
				HIRL Rwy 7-25	
				MIRL Rwy 16-34	
				REIL Rwy 16, 34	
				TDZL/CL Rwy 7	

# HI-ILS Y or LOC Y RWY 7

EC-2, 11 JUN 2026 to 09 JUL 2026

EC-2, 11 JUN 2026 to 09 JUL 2026