

LOC I-GWO 111.3	APP CRS 182°	Rwy Ldg TDZE Apt Elev	6501 145 162
---------------------------	------------------------	-----------------------------	---

ILS or LOC RWY 18

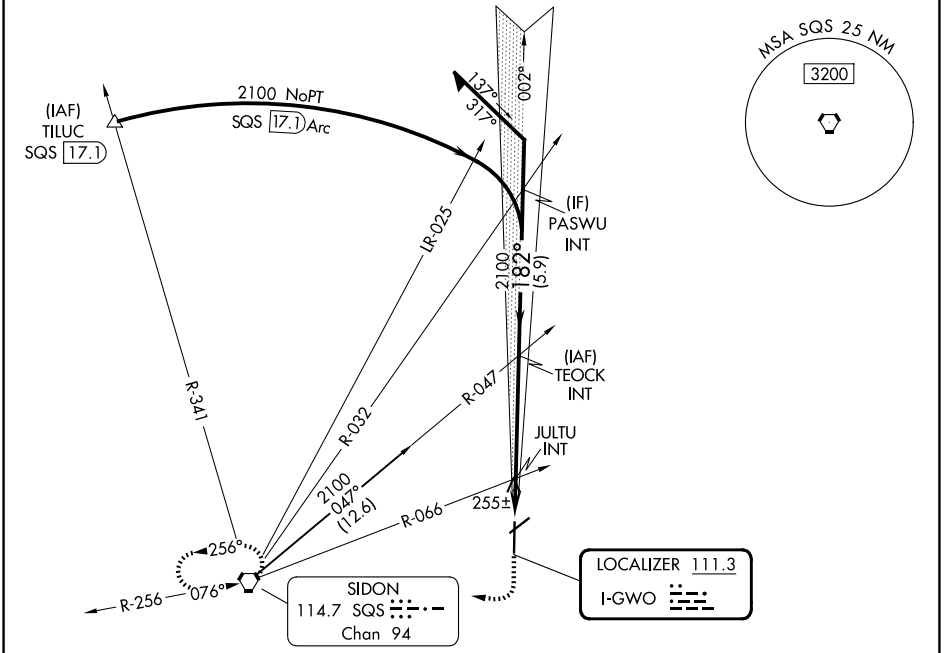
GREENWOOD-LEFLORE (GWO)

⚠ Rwy 18 helicopter visibility reduction below 3/4 SM NA. Circling Rwy 5, 23 NA at night. For inop ALS, increase S-ILS 18 all Cats 7/8 SM, and S-LOC 18 Cat A/B visibility to 1 SM.

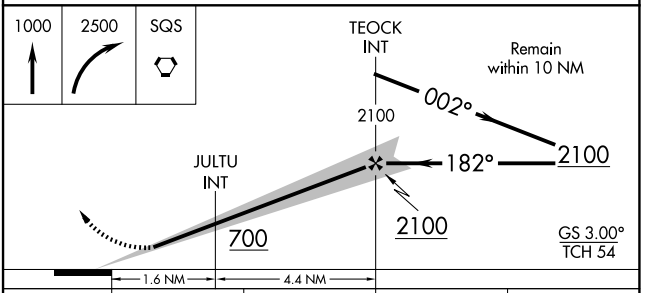
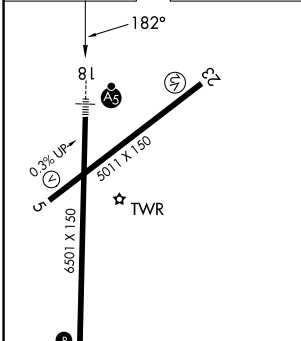
MALSR 

MISSED APPROACH: Climb to 1000 then climbing right turn to 2500 direct SQS VORTAC and hold.

ASOS 119.975	MEMPHIS CENTER 132.5 259.1	GREENWOOD TOWER ★ 118.35 (CTAF) 367.6	GND CON 125.55 373.4	UNICOM 122.95
------------------------	--------------------------------------	---	--------------------------------	-------------------------



ELEV 162	TDZE 145
-----------------	-----------------



CATEGORY	A	B	C	D
S-ILS 18		464-3/4	319 (400-3/4)	
S-LOC 18		520-3/4	375 (400-3/4)	
CIRCLING	720-1 558 (600-1)	760-1 598 (600-1)	940-2 3/4 778 (800-2 3/4)	1020-3 858 (900-3)

FAF to MAP 6 NM					
Knots	60	90	120	150	180
Min:Sec	6:00	4:00	3:00	2:24	2:00

SC-4, 11 JUN 2026 to 09 JUL 2026

SC-4, 11 JUN 2026 to 09 JUL 2026