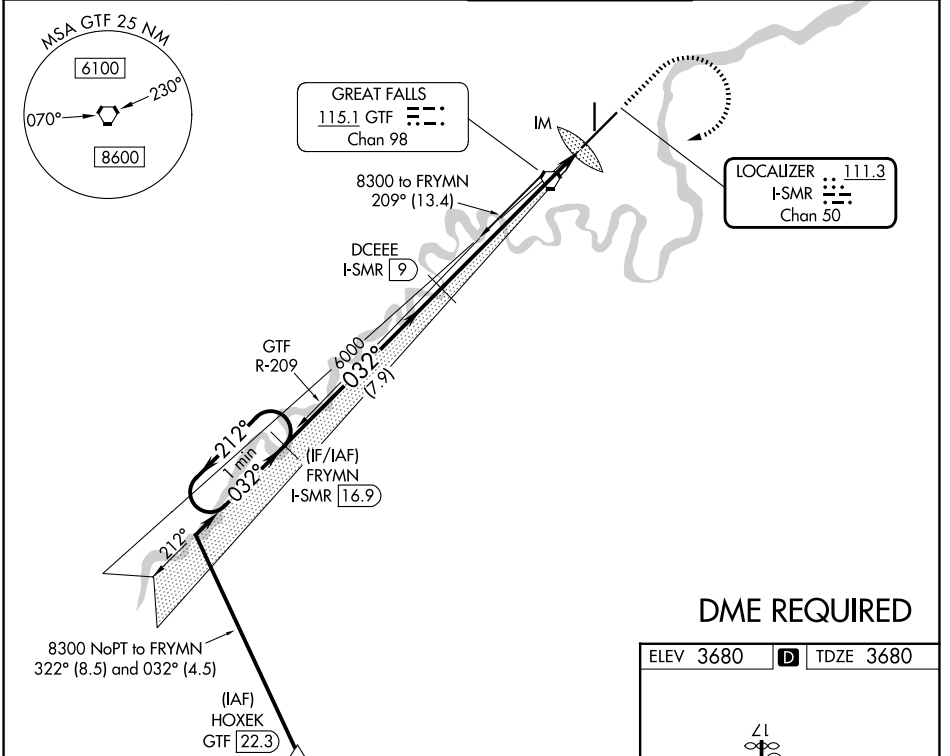


LOC/DME I-SMR 111.3 Chan 50	APP CRS 032°	Rwy Ldg 10502 TDZE 3680 Apt Elev 3680
--	------------------------	--

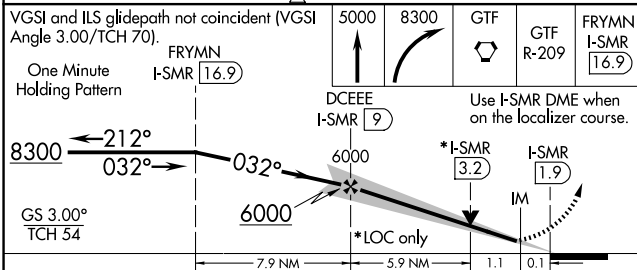
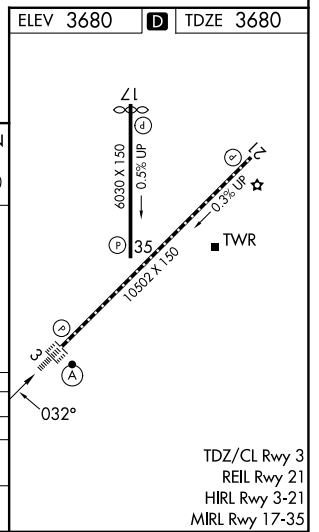
ILS or LOC RWY 3

GREAT FALLS INTL (GTF)

<p>DME required.</p>		MISSED APPROACH: Climb to 5000 then climbing right turn to 8300 direct GTF VORTAC then on GTF VORTAC R-209 to FRYMN/I-SMR 16.9 DME and hold.	
		ATIS 126.6 269.0	GREAT FALLS APP CON 128.6 379.175



DME REQUIRED



CATEGORY	A	B	C	D
S-ILS 3		3880/18	200 (200-½)	
S-LOC 3	4140/24	460 (500-½)	4140/45	460 (500-¾)
CIRCLING	4140-1	460 (500-1)	4340-1¾ 660 (700-1¾)	4420-2¼ 740 (800-2¼)

TDZ/CL Rwy 3
 REIL Rwy 21
 HIRL Rwy 3-21
 MIRL Rwy 17-35

NW-1, 11 JUN 2026 to 09 JUL 2026

NW-1, 11 JUN 2026 to 09 JUL 2026