

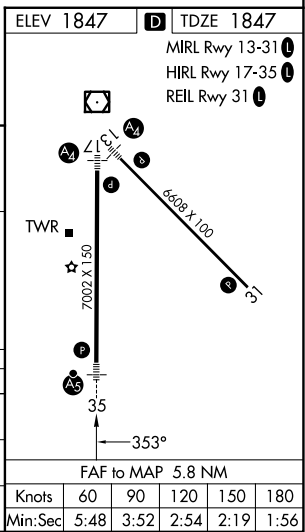
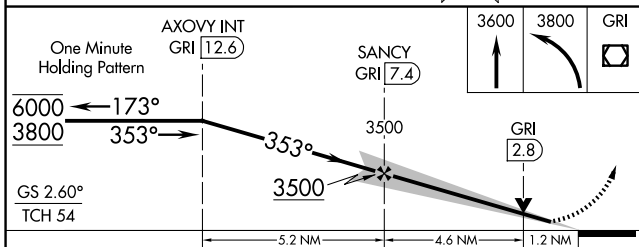
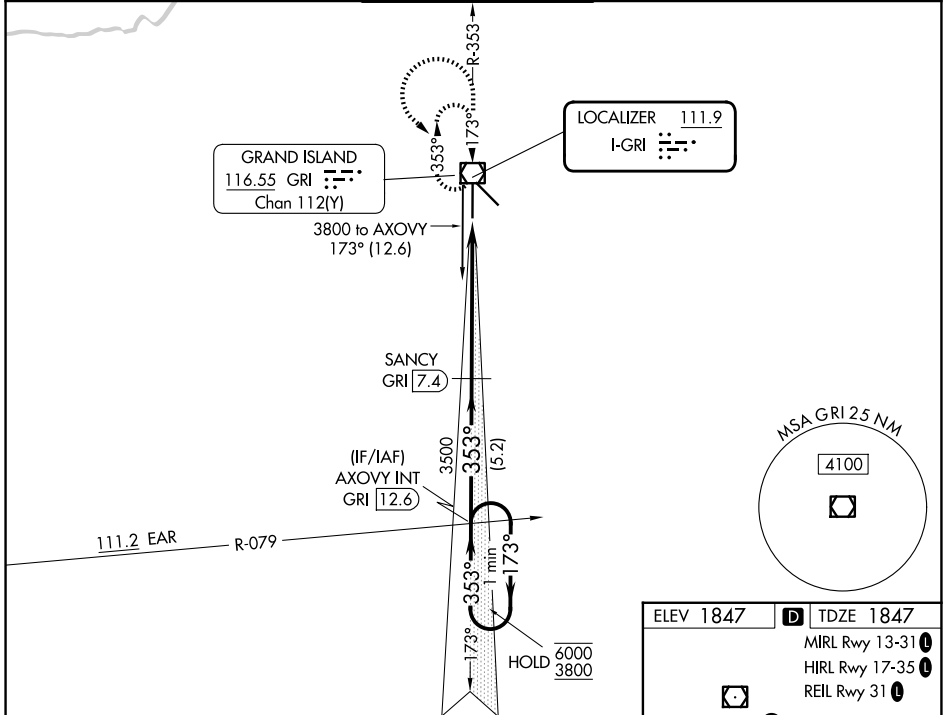
LOC I-GRI 111.9	APP CRS 353°	Rwy Ldg TDZE 7002 1847	Apt Elev 1847
---------------------------	------------------------	----------------------------------	-------------------------

ILS or LOC RWY 35

CENTRAL NEBRASKA RGNL (GRI)

DME required for LOC only.	MALSR 	MISSED APPROACH: Climb to 3600 then climbing left turn to 3800 direct GRI VOR/DME and hold, continue climb-in-hold to 3800.
<p>▼ For inop ALS, increase S-LOC 35 Cat C/D visibility to RVR 6000. DME from GRI VOR/DME, DME use requires simultaneous reception of I-GRI and GRI DME.</p> <p>▲ *RVR 1800 authorized with use of FD or AP or HUD to DA. (NA when using Aurora altimeter setting).</p>		

ATIS 127.4	MINNEAPOLIS CENTER 119.4 278.8	GRAND ISLAND TOWER * 118.2 (CTAF) 259.3	GND CON 121.9 259.3	UNICOM 122.95
----------------------	--	---	-------------------------------	-------------------------



CATEGORY	A	B	C	D
S-ILS 35*	2047/24		200 (200-½)	
S-LOC 35	2240/24	393 (400-½)	2240/35	393 (400-¾)
CIRCLING	2300-1	453 (500-1)	2400-1½ 553 (600-1½)	2560-2¼ 713 (800-2¼)

FAF to MAP 5.8 NM					
Knots	60	90	120	150	180
Min:Sec	5:48	3:52	2:54	2:19	1:56

NC-2, 11 JUN 2026 to 09 JUL 2026

NC-2, 11 JUN 2026 to 09 JUL 2026