

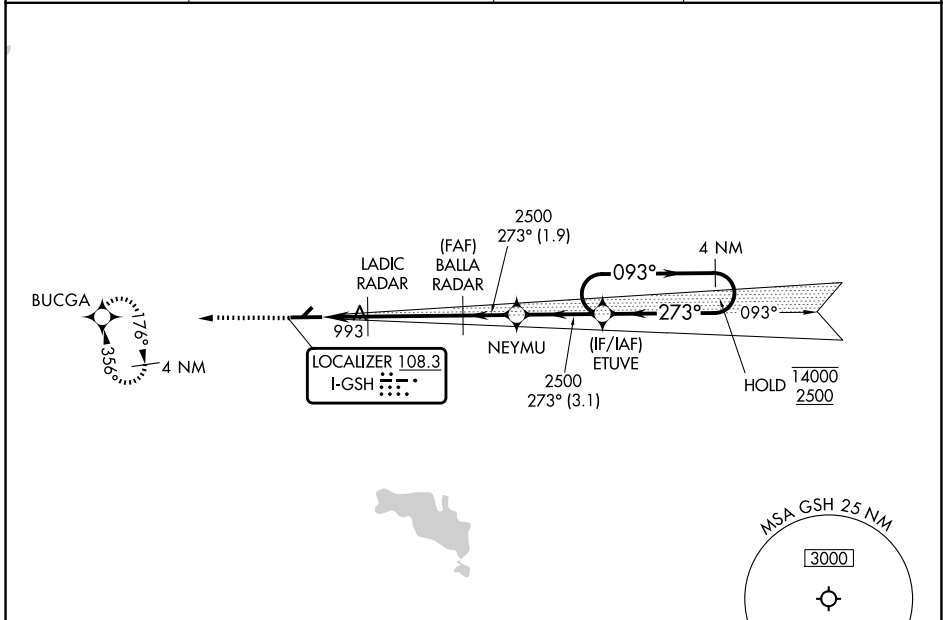
LOC I-GSH 108.3	APP CRS 273°	Rwy Ldg 6008
		TDZE 826
		Apr Elev 826

ILS or LOC RWY 27

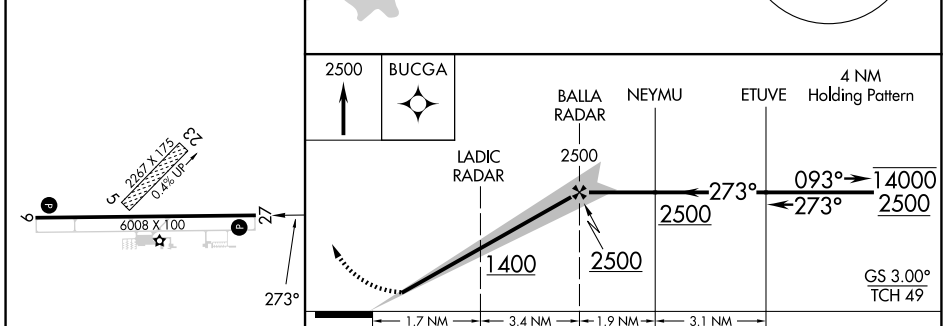
GOSHEN MUNI (GSH)

RNP APCH - GPS.		MISSED APPROACH: Climb to 2500 direct BUGCA and hold.
RADAR required to define BALLA and LADIC.		
<p>⚠ Circling NA to Rwy 5 and 23. Rwy 27 helicopter visibility reduction below 3/4 SM NA. When local altimeter setting not received, use ASW altimeter setting: increase DA to 1251 feet and all visibilities 1/8 SM; increase all MDAs 40 feet; increase Cat D Circling visibility 1/4 SM.</p>		

ASOS 121.45	SOUTH BEND APP CON * 132.05 257.8	CLNC DEL 125.25	UNICOM 123.05 (CTAF) 0
-----------------------	---	---------------------------	----------------------------------



ELEV 826	TDZE 826
----------	----------



CATEGORY	A	B	C	D
S-ILS 27	1212-1 1/8		386 (400-1 1/8)	
S-LOC 27	1300-1	474 (500-1)	1300-1 3/8	474 (500-1 1/8)
CIRCLING	1300-1 474 (500-1)	1320-1 494 (500-1)	1500-2 674 (700-2)	1560-2 1/4 734 (800-2 1/4)

GOSHEN, INDIANA
Amdt 2 12JUN25
HIRL Rwy 9-27 0
REL Rwy 5 and 27 0

41°32'N-85°48'W

GOSHEN MUNI (GSH)

ILS or LOC RWY 27

EC-2, 11 JUN 2026 to 09 JUL 2026

EC-2, 11 JUN 2026 to 09 JUL 2026