

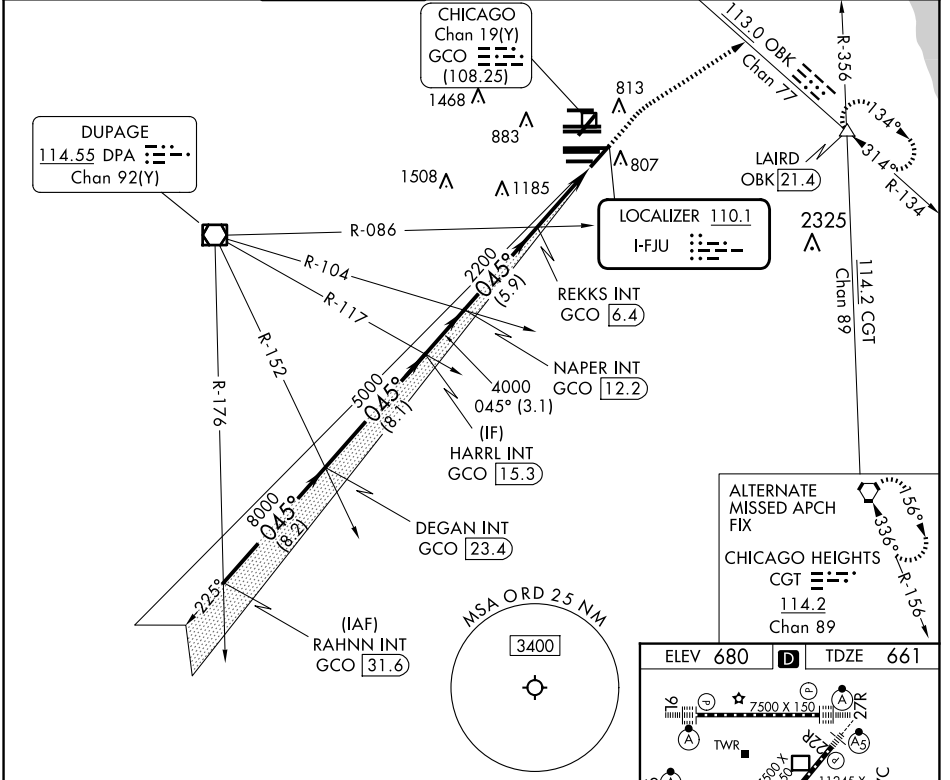
LOC I-FJU 110.1	APP CRS 045°	Rwy Ldg TDZE Apt Elev	8075 661 680
---------------------------	------------------------	-----------------------------	---

ILS or LOC RWY 4R

CHICAGO O'HARE INTL (ORD)

RADAR required for procedure entry.		MALSR	MISSED APPROACH: Climb to 1200 then climbing right turn to 4000 on heading 060° and OBK VOR/DME R-134 to LAIRD INT/OBK 21.4 DME and hold.	
-------------------------------------	--	-------	---	--

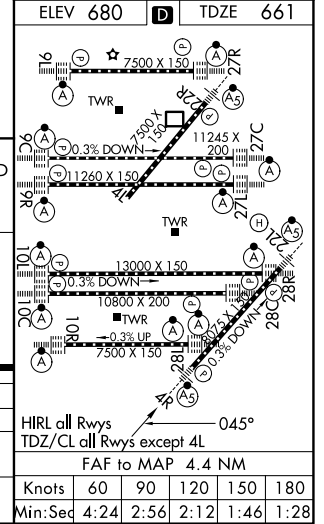
D-ATIS 135.4 282.225	CHICAGO APP CON 119.0 292.125	O'HARE TOWER 120.75 348.0	124.125 (TWR NORTH) 118.05 (TWR SOUTH) 226.675 (ALL TWRs)	GND CON (TWR CENTER) 121.75 (OBND) 121.9 (IBND)	CLNC DEL 121.6	CPDLC
--	---	-------------------------------------	--	---	--------------------------	-------



RAHNN INT GCO [31.6]	VGS1 and ILS glidepath not coincident (VGS1 Angle 3.00/TCH 67).		1200	4000	OBK R-134	LAIRD
DEGAN INT GCO [23.4]	HARRL INT GCO [15.3]	NAPER INT GCO [12.2]	REKKS INT GCO [6.4]	2128		
GS 3.00° TCH 52		8000 045°		5000	4000	2200
8.2 NM		8.1 NM		3.1 NM		5.9 NM
CATEGORY	A	B	C	D		
S-ILS 4R	861/18		200 (200-½)			
S-LOC 4R	1160/24 499 (500-½)		1160/50 499 (500-1)			
CIRCLING	1220-1 540 (600-1)		1220-1½ 540 (600-1½)		1460-2½ 780 (800-2½)	

ALTERNATE MISSED APCH FIX

CHICAGO HEIGHTS CGT [114.2] Chan 89



EC-3, 11 JUN 2026 to 09 JUL 2026

EC-3, 11 JUN 2026 to 09 JUL 2026