

LOC I-GLS <b>111.7</b>	APP CRS <b>138°</b>	Rwy Ldg 6000
		TDZE 5
		Apt Elev 6

# ILS or LOC RWY 14

SCHOLES INTL AT GALVESTON (GLS)

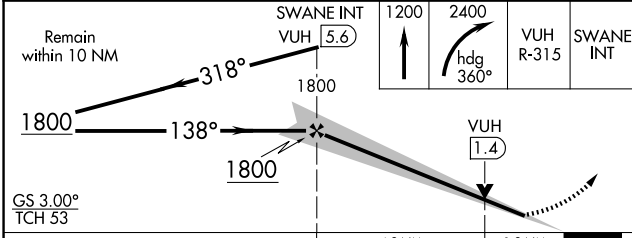
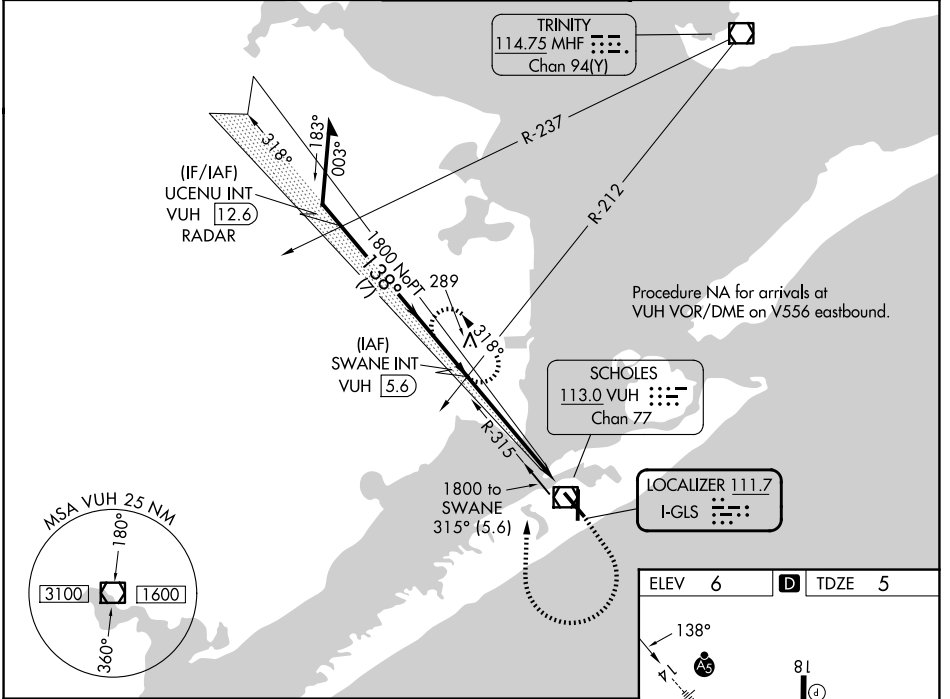
RADAR required for procedure entry at UCENU.

**NA** Circling NA east of Rwy 18 and northeast of Rwy 32. For inop ALS, increase S-LOC 14 Cat A and B visibility to 1 SM. DME from VUH VOR/DME. Simultaneous reception of I-GLS and VUH DME required.

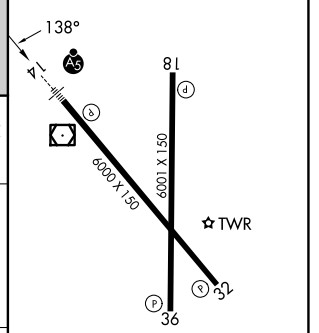
**MALSR**

MISSED APPROACH: Climb to 1200 then heading right turn to 2400 on climb right turn to 2400 on heading 360° and VUH VOR/DME R-315 to SWANE INT/VUH 5.6 DME and hold, continue climb-in-hold to 2400.

ASOS <b>123.95</b>	HOUSTON APP CON <b>134.45 284.0</b>	GALVESTON TOWER ★ <b>120.575 (CTAF) 0</b>	GND CON <b>118.625</b>	UNICOM <b>123.05</b>
-----------------------	--	--	---------------------------	-------------------------



ELEV 6	TDZE 5
--------	--------



CATEGORY	A	B	C	D
S-ILS 14	205-½ 200 (200-½)			
S-LOC 14	460-½ 455 (500-½)	460-7/8 455 (500-7/8)		
CIRCLING	500-1 494 (500-1)	520-1 514 (600-1)	620-1¾ 614 (700-1¾)	620-2 614 (700-2)

REIL Rwy 18, 32, and 36  
MIRL Rwy 18-36  
HIRL Rwy 14-32

FAF to MAP 5.5 NM

Knots	60	90	120	150	180
Min:Sec	5:30	3:40	2:45	2:12	1:50

SC-5, 11 JUN 2026 to 09 JUL 2026

SC-5, 11 JUN 2026 to 09 JUL 2026