

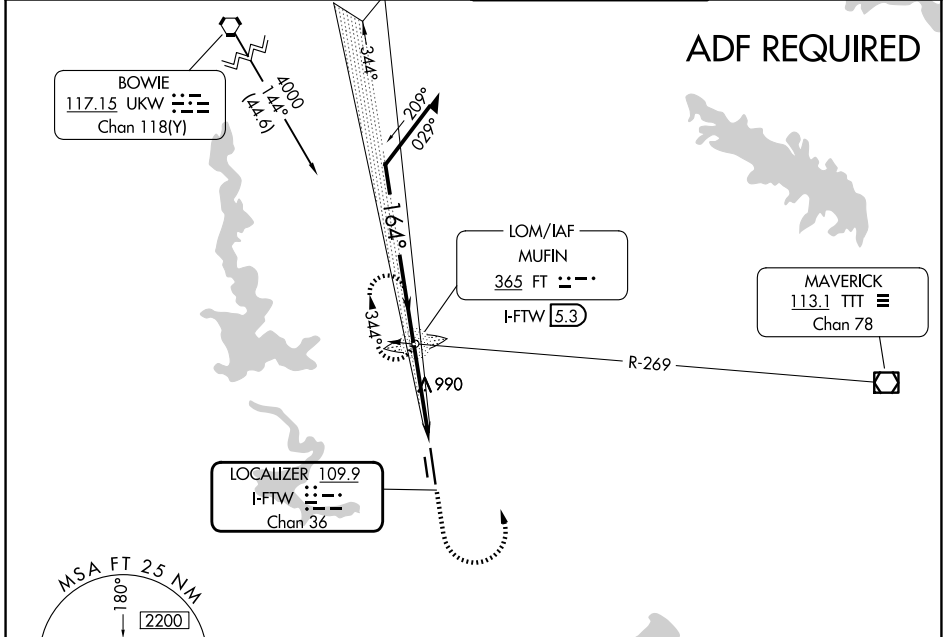
LOC I-FTW <b>109.9</b> Chan <b>36</b>	APP CRS <b>164°</b>	Rwy Ldg <b>7502</b> TDZE <b>710</b> Apt Elev <b>710</b>
---	------------------------	---

# ILS or LOC RWY 16

FORT WORTH MEACHAM INTL (FTW)

<p>*RVR 1800 authorized with the use of FD or AP or HUD to DA.</p>	<p>MALSRL</p>	<p>MISSED APPROACH: Climb to 1300 then climbing left turn to 2500 direct FT LOM and hold, continue climb-in-hold to 2500.</p>
--	---------------	---

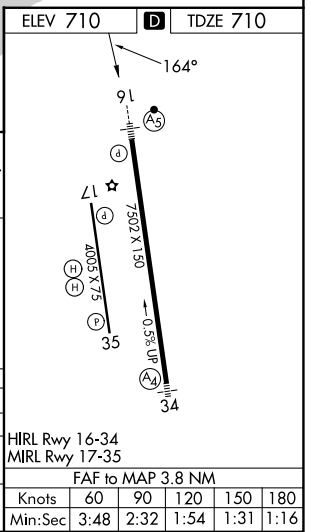
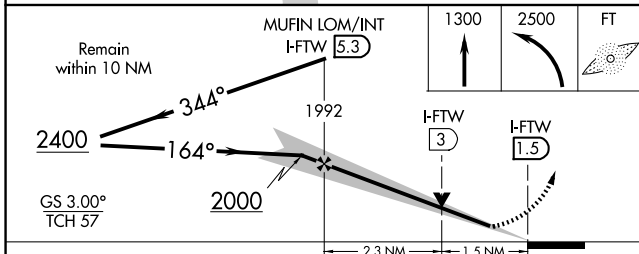
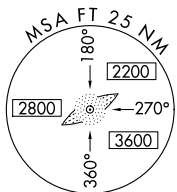
<p>ATIS <b>120.7</b></p>	<p>LONE STAR APP CON <b>118.1 306.95</b> (N) <b>135.975 379.9</b> (S)</p>	<p>MEACHAM TOWER <b>118.3 257.8</b></p>	<p>GND CON <b>121.9</b></p>
------------------------------	---	---	---------------------------------



**ADF REQUIRED**

SC-2, 11 JUN 2026 to 09 JUL 2026

SC-2, 11 JUN 2026 to 09 JUL 2026



CATEGORY	A	B	C	D
S- ILS 16*	910/24 200 (200-½)			
S- LOC 16	1240/24	530 (600-½)	1240/50 530 (600-1)	1240/60 530 (600-1½)
CIRCLING	1260-1 550 (600-1)	1280-1 570 (600-1)	1340-1¾ 630 (700-1¾)	1500-2½ 790 (800-2½)

HIRL Rwy 16-34 MIRL Rwy 17-35					
FAF to MAP 3.8 NM					
Knots	60	90	120	150	180
Min:Sec	3:48	2:32	1:54	1:31	1:16